



Photowall

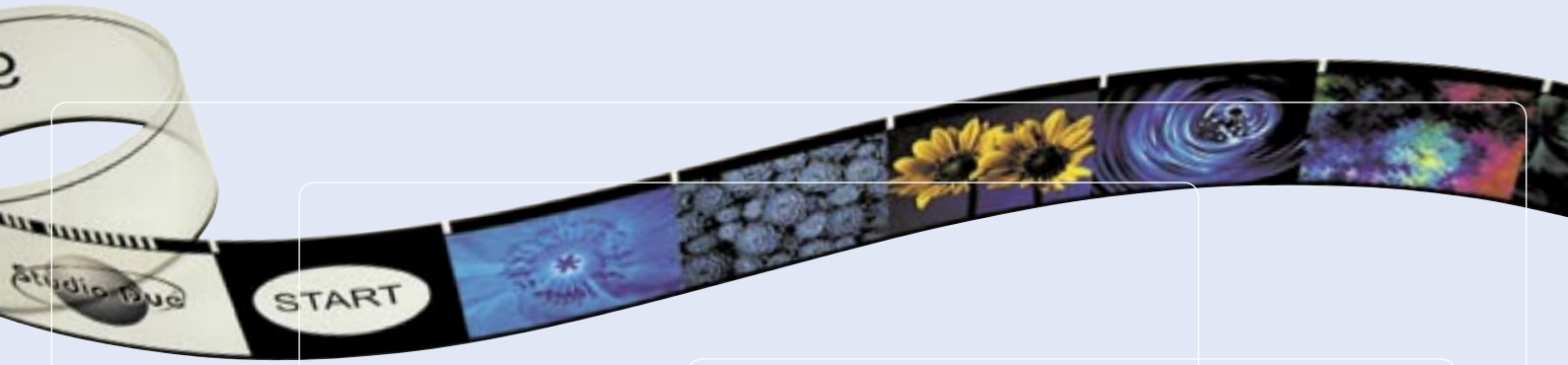
1200e

electronic ballast

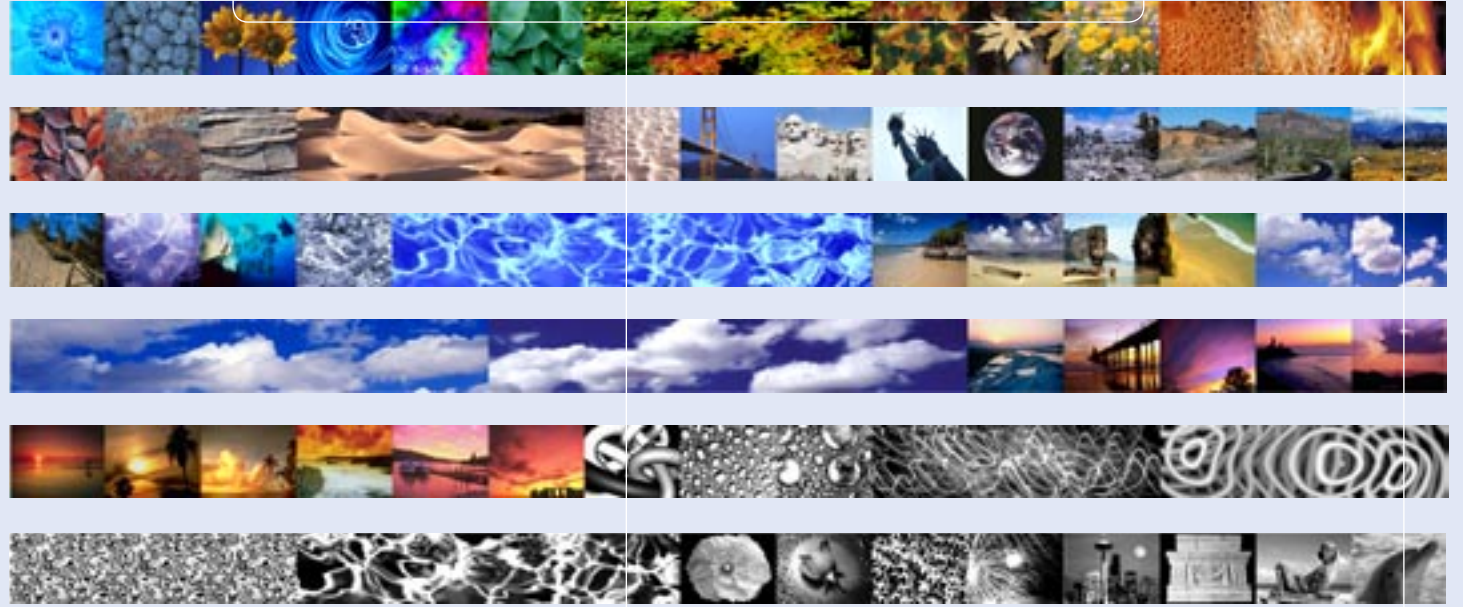


images projector





90 pictures film endowed with the fixture



The control panel with graphic LCD display. Easy and intuitive menu for total fixture control



Some of the intuitive menu

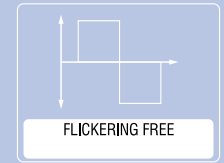
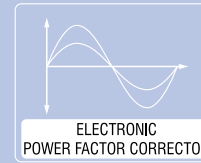
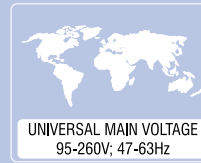


The optional f112 optic:



Photowall 1200e technical features

- Lamp: HMI1200W/GS
 - Luminous flux: 110.000 lm
 - Power: 1200W
 - Colour temperature: 6000 K
 - Lamp life: 1000 hrs
 - Burning position: universal



- Electronic Ballast with PFC; (95-260V; 47-63Hz)
- Control panel with graphic LCD display and smart reading by DMX start address by a triple led display
- Easy and intuitive program and setup by a dynamic menu and four buttons
- Four full editable user programs for a total of 682 scenes for stand alone control (without DMX controller)
- Full length film continuous positioning by DMX 16 bit or by "INDEX MODE" for fast positioning frame
- Linear mechanical dimmer 0..100%
- Strobe function: min. 1 flash/2 sec. - max 8 flash/1 sec.
- Motorized focus
- Selectable film length (from 10 to 90 frames)
- Closed loop film position control by optical encoder
- Film speed: max 5 sec./10 frames; min 90sec./1 frame

- 90 pictures film
- PC and Mac file (Illustrator) for custom film

- 4 optic type: (see diagrams)
 - Standard: f160 - f180 Ø 80mm
 - Optional: f230 and f112

- DMX channels:
 - ch1= scroller speed
 - ch2= strobe
 - ch3= dimmer speed
 - ch4= dimmer
 - ch5= scroller coarse
 - ch6= scroller fine
 - ch7= focus
 - ch8= not used
 - ch9= index
 - ch10= reset lamp/off

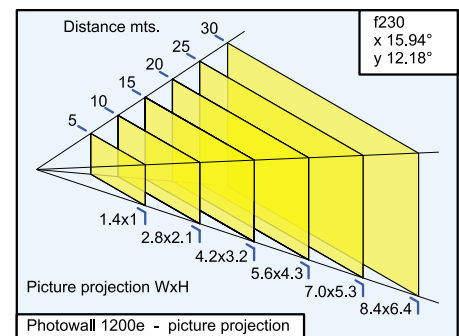
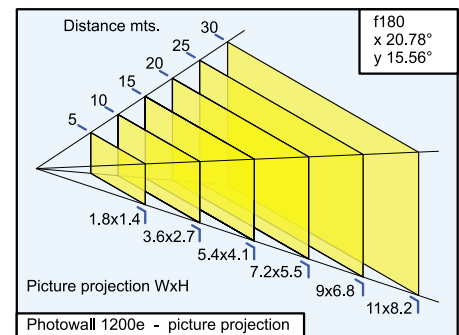
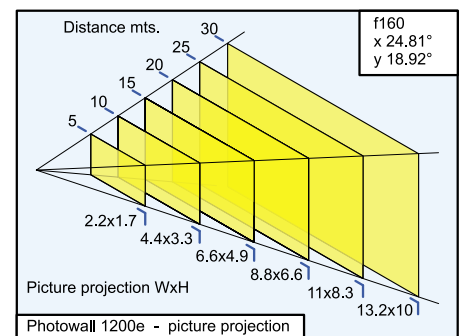
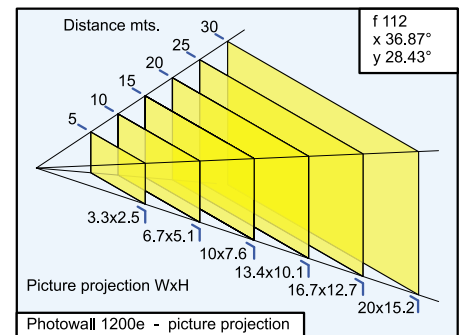
- Mains power supply: 95-260V; 47-63Hz
- Built in electronic PFC: $\cos\phi$ 0.99
- Lamp square wave frequency: 100Hz
- Max electronic lamp dimmer: -35% (800W)
- Remote optocoupled lamp on/off
- Thermal shutdown protection

- Dimensions: (LxWxH) mm 755x475x390

- Weight: 28 Kgs.

- Available model:
 - art. 0401 Photowall 1200e

- Available accessories:
 - PW/OPT1 230: f230
 - PW/OPT1 112: f112



The optional f230 optic:



The standard optics:
f160 and f180

