

## Hardware case

The hardware case features, aluminium rack profiles, heavy duty twist latches, two intergrated wheels at one end, surface mounted handles.

Hardware case w/wheels

### External Dimensions

1070 X 350 X 340 mm

### Internal Dimensions

1000 x 280 x 270 mm

### Weight in Kg.

8,6



## Standard Rackmount cases

The standard rackmount cases features, front & rear rack rails, heavy duty twist latches, shock absorbing rubber feet, stackable with shallow racks, MIC24 and 4-11-1-8U-HE slant mixercase, heat treated M6 nuts & bolts, integrated handgrips.



	Rail to Rail	External Dimensions	Kg.
2U-HE standard rackmountcase	450 mm	535 X 620 X 200 mm	5,1
4U-HE standard rackmountcase	450 mm	535 X 620 X 285 mm	6
6U-HE standard rackmountcase	450 mm	535 X 620 X 375 mm	7
8U-HE standard rackmountcase	450 mm	535 X 620 X 465 mm	8,3

## Shallow Rackmount cases

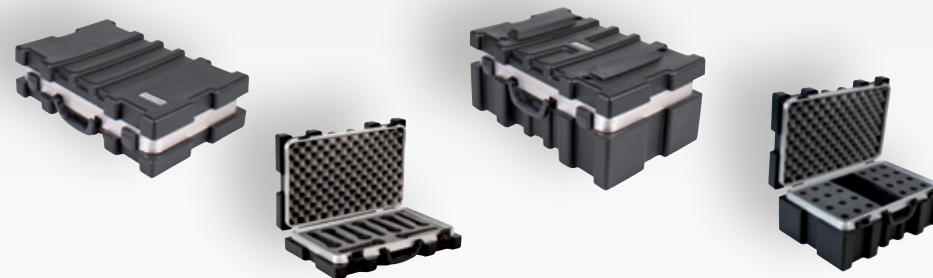
The shallow rackmount cases features, front rack rails, rear acces panel, heavy duty twist latches, shock absorbing rubber feet, stackable with standard racks, MIC24 and 4-11-1-8U-HE slant mixercase, heat treated M6 nuts & bolts, integrated handgrip at one end.



	Rail to Back	External Dimensions	Kg.
2U-HE shallow rackmountcase	280 mm	375 X 570 X 175 mm	3,2
3U-HE shallow rackmountcase	280 mm	375 X 570 X 225 mm	3,4
4U-HE shallow rackmountcase	280 mm	375 X 570 X 270 mm	3,8

## Microphone cases

The microphone cases features, quality fittings of the mics, storing 9 or 24 microphones, high quality hardware, MIC24 is stackable with the standard racks, shallow racks and 4-11-1-8U-HE slant mixercase.



	External Dimensions	Kg.
MIC9 microphonecase for 9 mics	350 X 535 X 145 mm	3,5
MIC24 microphonecase fot 24 mics	350 X 535 X 250 mm	4,2

[www.boschmacases.com](http://www.boschmacases.com)

### Mixer case

The slant mixer case features, front & rear rack rails, heavy duty twist latches, shock absorbing rubber feet, heat treated M6 nuts & bolts and surface mounted handles. On front there is 4U rack space, on top 11U angled rack space, in "the bridge" 1U rack space for your rack light, 8U rackspace in rear. When packed, the lids will fit over installed XLR and Jack cable connectors.



4-11-1-8U-HE slant mixercase

External Dimensions  
455 X 565 X 730 mm

Kg.  
11,3

### Custom cases

If you have special wishes and requirements, we can make a complete new customized case for you. We handle all internally for you, which means from the first design on A-cad, making the new aluminium mould, the production and final assembling of your case.



special case for machineparts

# **Boschma cases**

Factory: Industrial area Lemsterhoek  
Kadijk 8, 8531 XD Lemmer  
the Netherlands  
Office: Slotermeerstraat 39  
8531 RH Lemmer - the Netherlands

Phone: 0031 514 561888 / 566173  
Fax: 0031 514 5534236  
E-mail: [info@boschmacases.com](mailto:info@boschmacases.com)  
Web: [www.boschmacases.com](http://www.boschmacases.com)  
VAT.no. 109206010B01

# **Boschma cases**

*the right protection of your gear!*



Boschma cases is specialized in the production of plastic rotational molded cases made out of polyethylene material.

From the rotational molding process, bending of the aluminium profiles till the complete assembling and packing of our cases, we do it all in our factory.

You can rely on Boschma cases to deliver superior cases at the right price.

**[www.boschmacases.com](http://www.boschmacases.com)**