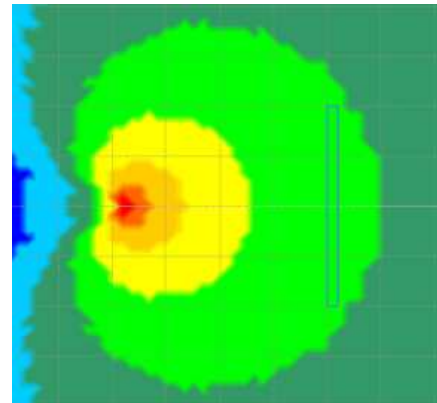


PARAMETRY PRO OPTIMÁLNÍ NASTAVENÍ SMĚROVÉHO SUBWOOFERU MEGATON DS312 - cardioid			
Mega ton www. .cz		OUTPUT 1 FRONT BASS	OUTPUT 2 REAR BASS
LEVEL		0 dB	0 dB
POLARITY		positive	negative
DELAY		0ms	2,5ms
LPF	TYPE	BW	BW
	FREQ	100Hz	100Hz
	SLOPE	24 dB/oct	24 dB/oct
HPF	TYPE	BS	BS
	FREQ	35Hz	35Hz
	SLOPE	18 dB/oct	18 dB/oct
EQ1	TYPE	PEQ	PEQ
	LEVEL	+2 to +4 dB	+2 to +4dB
	FREQ	40Hz	40Hz
	BW	0,5	0,5
	Q	2	2
EQ2	TYPE		
	LEVEL		
	FREQ		
	Q		
EQ3	TYPE		
	LEVEL		
	FREQ		
	Q		
EQ4	TYPE		
	LEVEL		
	FREQ		
	BW		

Širší vyzařovací diagram s minimem na 180st.



PARAMETRY PRO OPTIMÁLNÍ NASTAVENÍ SMĚROVÉHO SUBWOOFERU MEGATON DS312 - hypercardioid			
Mega ton www. .cz		OUTPUT 1 FRONT BASS	OUTPUT 2 REAR BASS
LEVEL		0 dB	0 dB
POLARITY		positive	negative
DELAY		0ms	1,7ms
LPF	TYPE	BW	BW
	FREQ	100Hz	100Hz
	SLOPE	24 dB/oct	24 dB/oct
HPF	TYPE	BS	BS
	FREQ	35Hz	35Hz
	SLOPE	18 dB/oct	18 dB/oct
EQ1	TYPE	PEQ	PEQ
	LEVEL	+2 to +4 dB	+2 to +4dB
	FREQ	40Hz	40Hz
	BW	0,5	0,5
	Q	2	2
EQ2	TYPE		
	LEVEL		
	FREQ		
	Q		
EQ3	TYPE		
	LEVEL		
	FREQ		
	Q		
EQ4	TYPE		
	LEVEL		
	FREQ		
	BW		

Užší vyzařovací diagram s minimem na 135st.

