

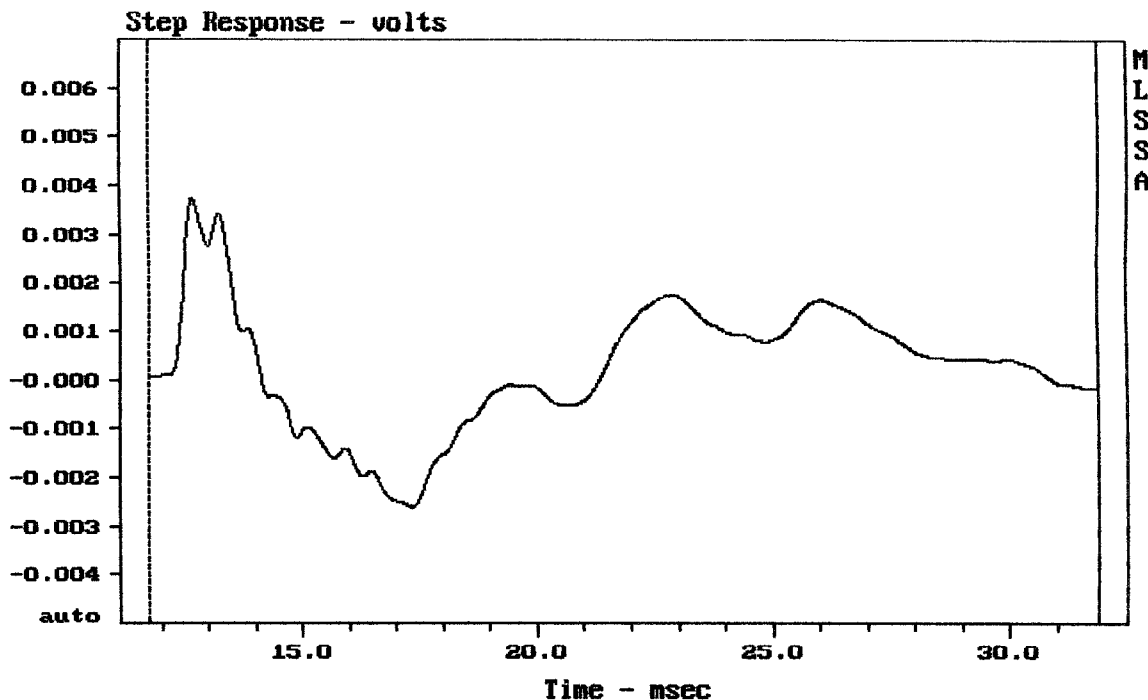

---

Level (31:122 Hz) = 98.69 dB SPL/watt (4 ohms, @4.00 meters)

---

RCF SUB8004-AS pasiv

MLSSA: Frequency Domain



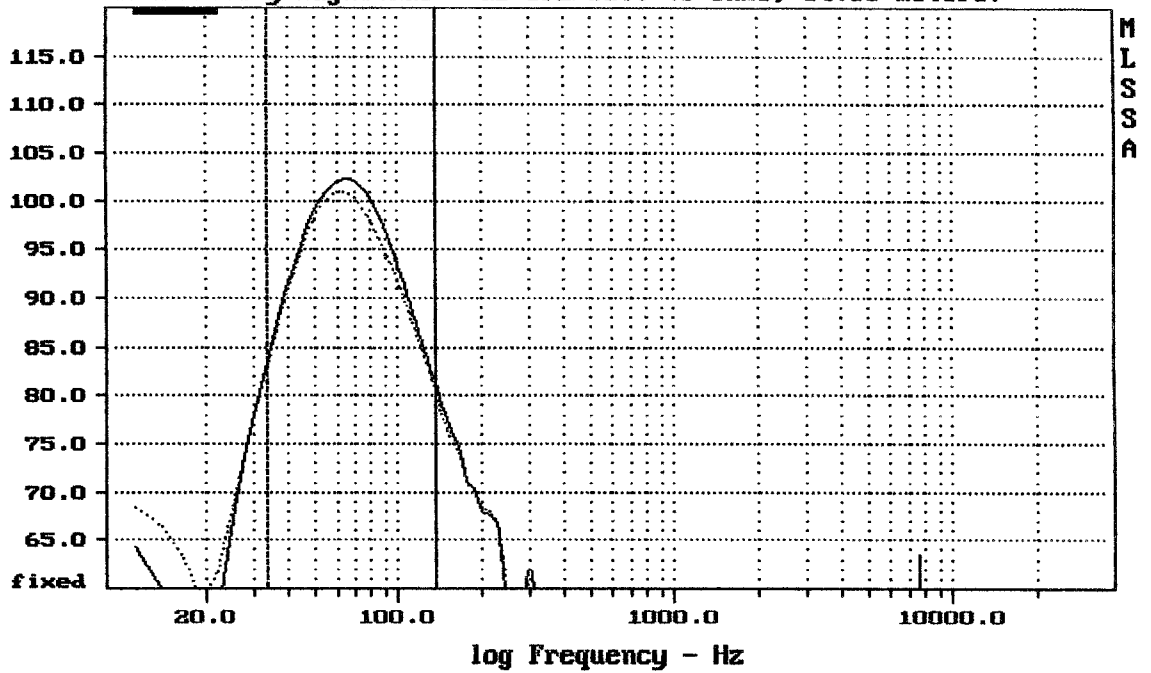

---

CURSOR: y = -0.000163803 x = 31.8670 (2897)

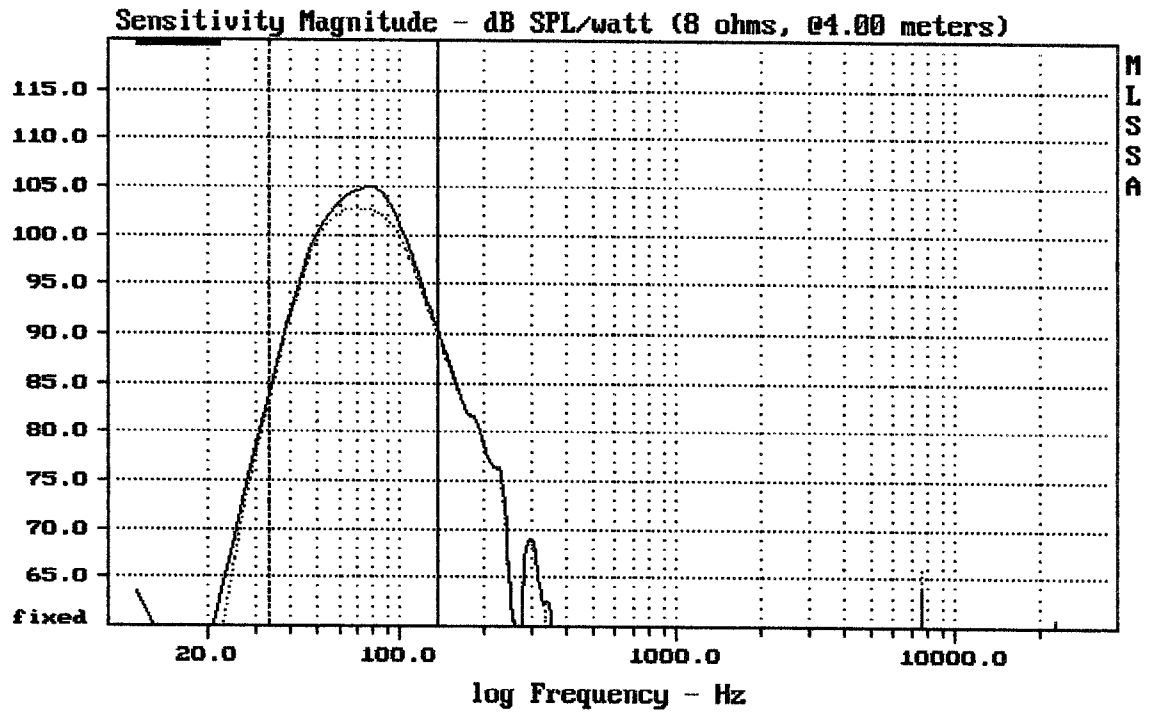
---

RCF SUB8004-AS pasiv

Sensitivity Magnitude - dB SPL/watt (8 ohms, @4.00 meters)



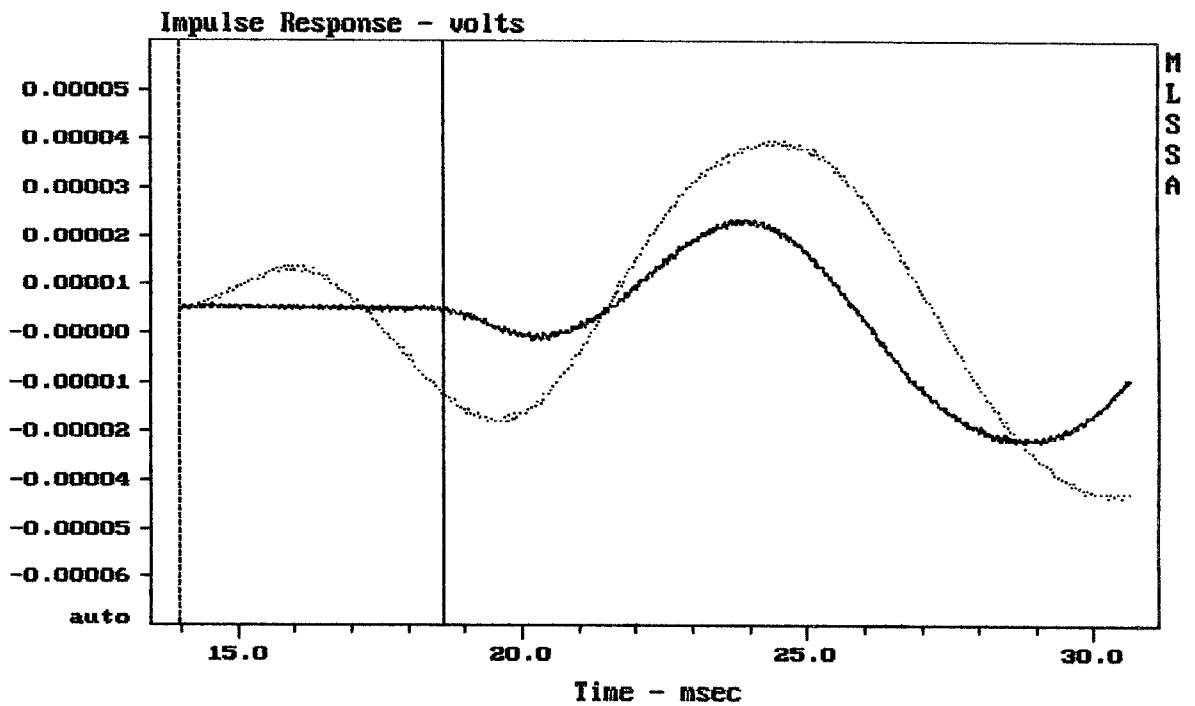
CURSOR: dy = -0.706673 x = 135.9419 (49)



CURSOR:  $dy = -0.467972$   $x = 135.9419$  (49)

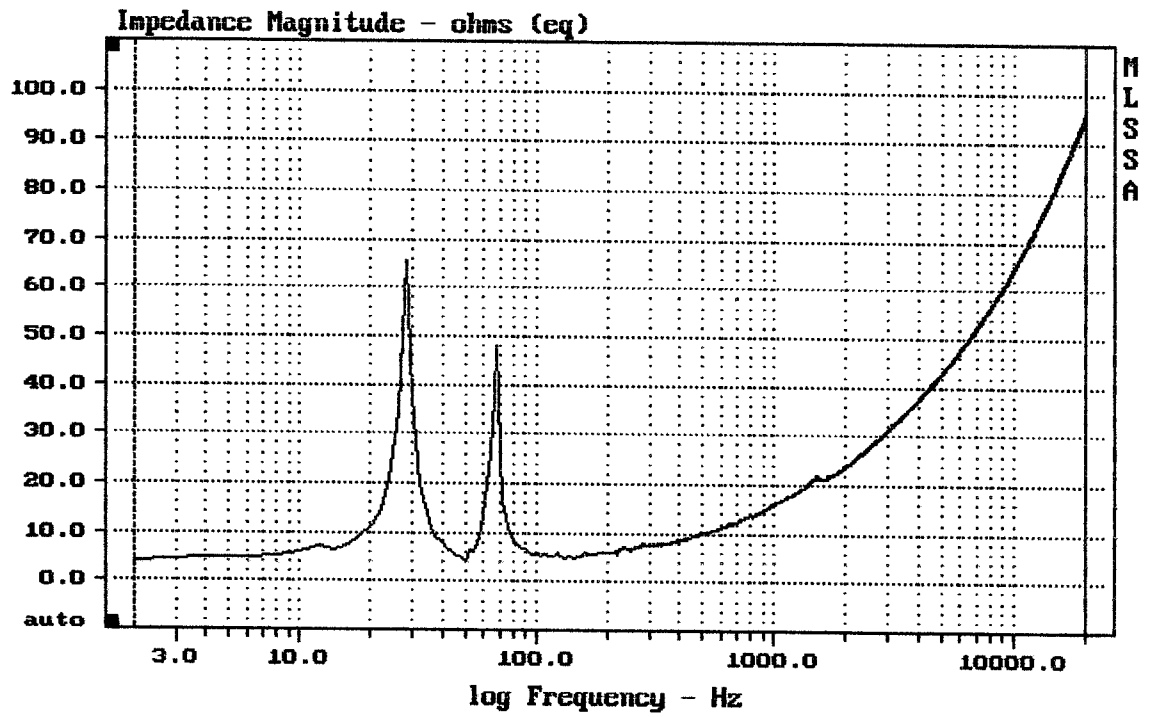
RCF SUB8004-AS LPF 120Hz , DEEP .. / PUNCH ---

MLSSA: Frequency Domain



mean:  $5.328e-007$ , rms:  $7.167e-006$ , std:  $7.147e-006$ , max:  $8.797e-006$ , min:  $-1.7$

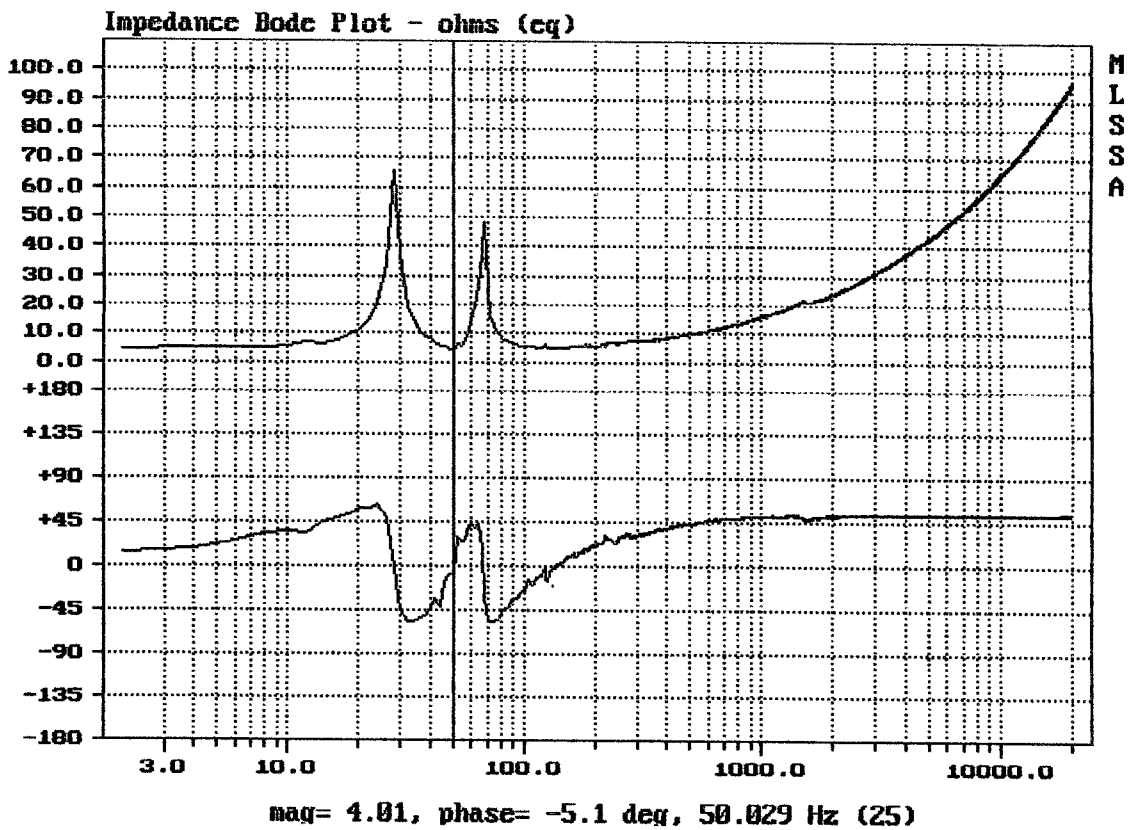
RCF SUB8004-AS norm. ... / cardioid ---

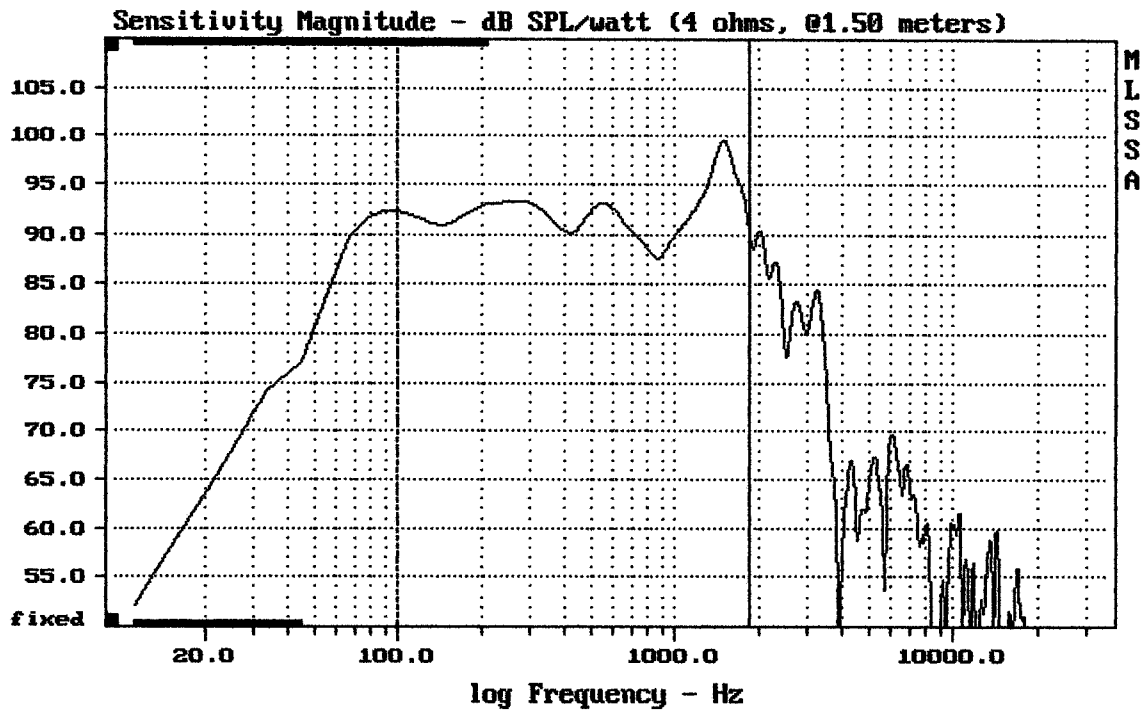


mean: 60.67, rms: 65.32, std: 24.19, max: 96.75, min: 4.005

RCF SUB8004-AS pasiv.

MLSSA: Frequency Domain

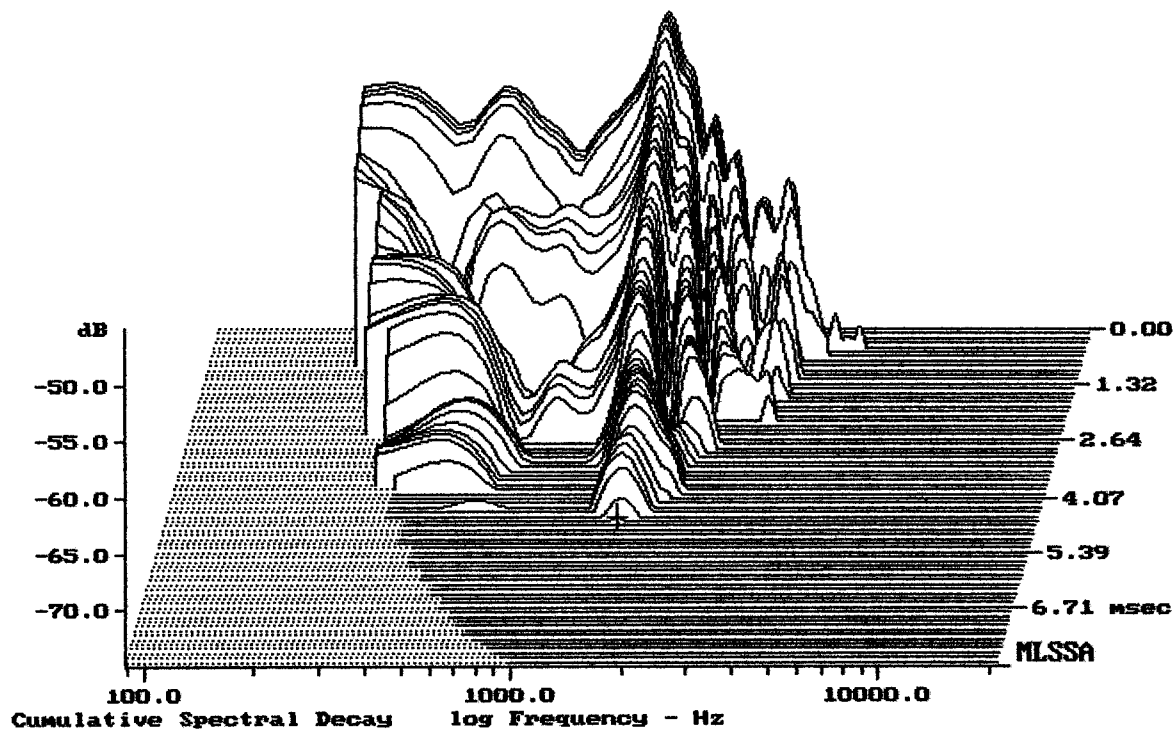




Level (100:1842 Hz) = 92.86 dB SPL/watt (4 ohms, @1.50 meters)

18" SUB 8004-AS

MLSSA: Frequency Domain



-74.69 dB, 1509 Hz (34), 4.620 msec (43)

DITO

## Measured Data

QC Limits

Line	Parameter	Value	Units
1	RMSE-free	0.58	Ohms
2	Fs	37.01	Hz
3	Re	3.91	Ohms[dc]
4	Res	95.35	Ohms
5	Qms	9.05	
6	Qes	0.37	
7	Qts	0.36	
8	L1	1.45	mH
9	L2	2.02	mH
10	R2	7.66	Ohms
11	RMSE-load	0.49	Ohms
12	Vas(Sd)	209.46	liters
13	Mms	186.18	grams
14	Cms	99	$\mu\text{M}/\text{Newton}$
15	B1	21.35	Tesla-M
16	SPLref(Sd)	96.4	dB[Re]
17	Rub-index	0.01	

Method: Mass-loaded (120.00 grams)

Area (Sd): 1225.42 sq cm

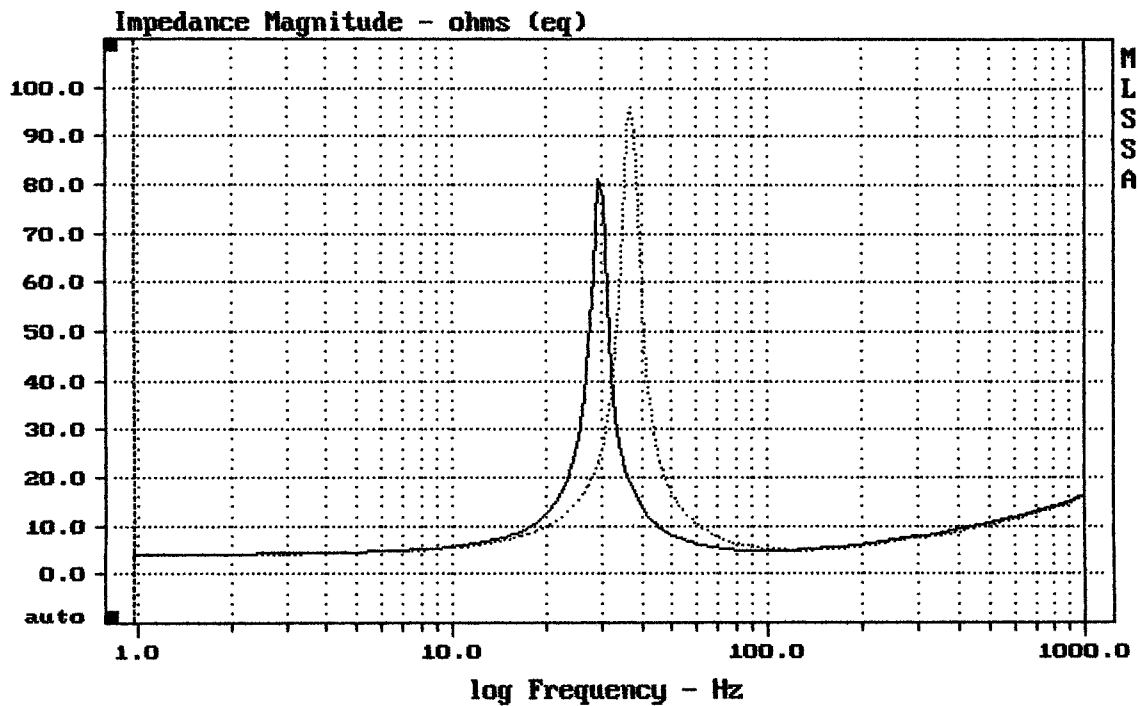
DCR mode: Measure (-0.12 ohms)

QC file: CLOSED

Analysis successful. Shift in Fs = -20.2% (-20% to -50% is recommended).

RCF SUB 8004AS

MLSSA: Parameters




---

 mean: 11.14, rms: 13.17, std: 7.027, max: 96.07, min: 3.991
 

---

MLSSA: Frequency Domain