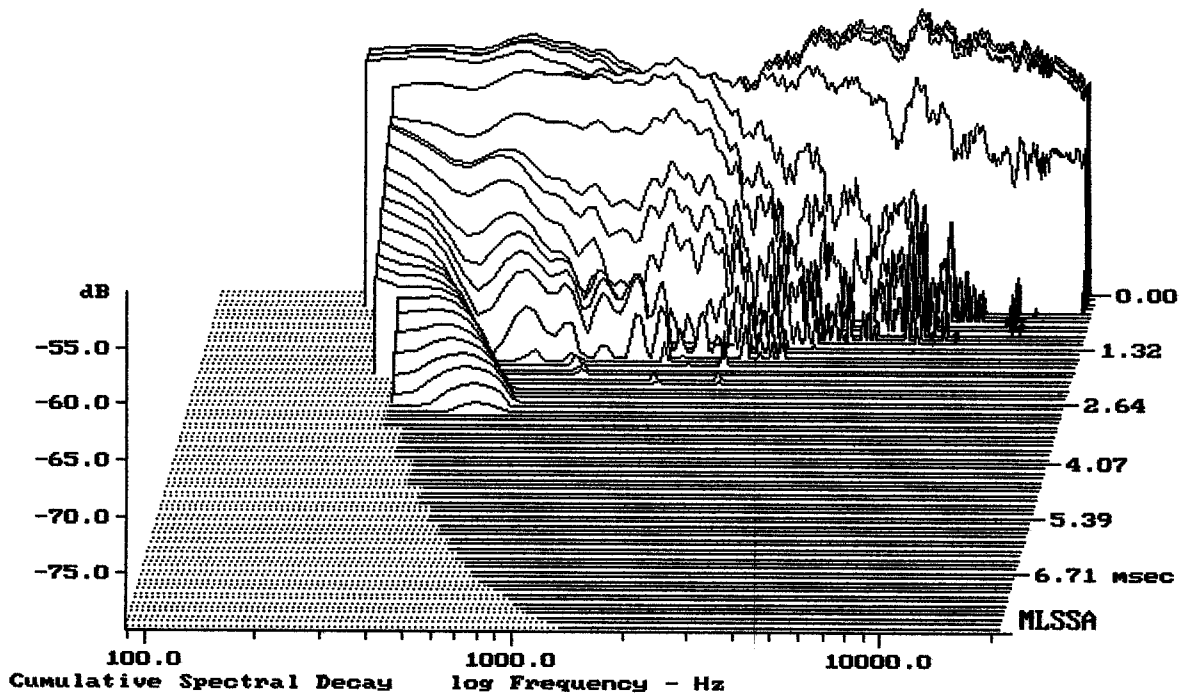


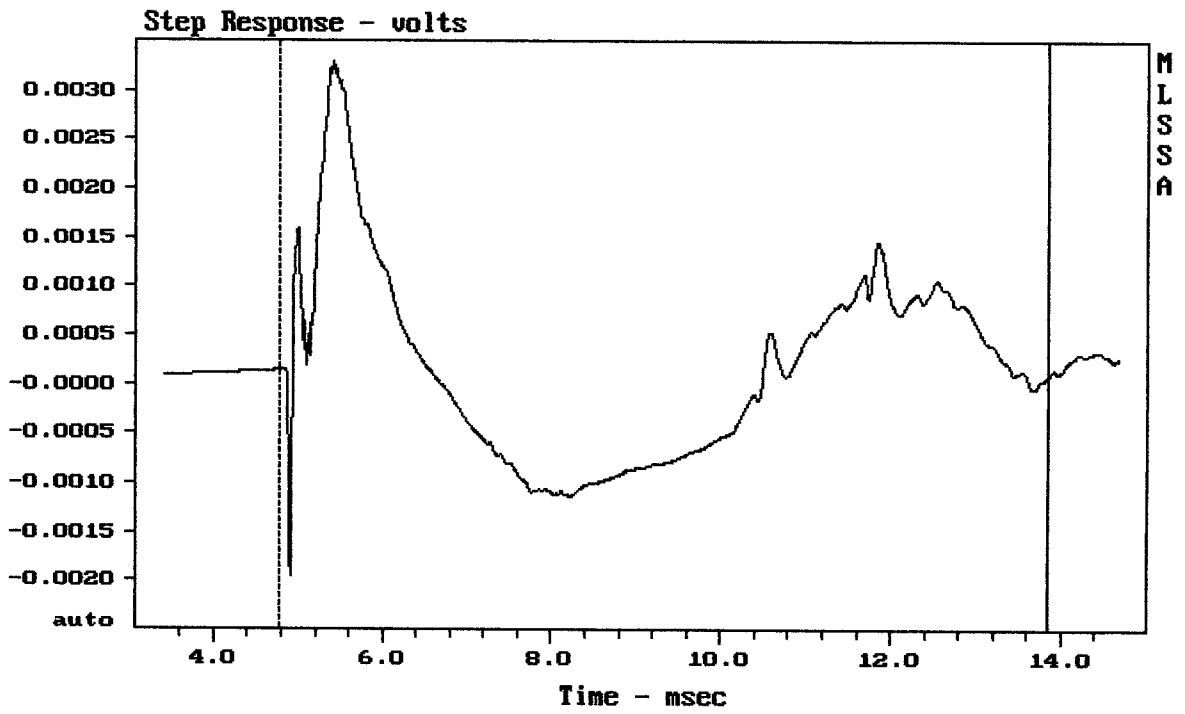
mean: 91.23, rms: 91.44, std: 1.76, max: 95.02, min: 83.00

MACKIE HR626 THX

MLSSA: Frequency Domain



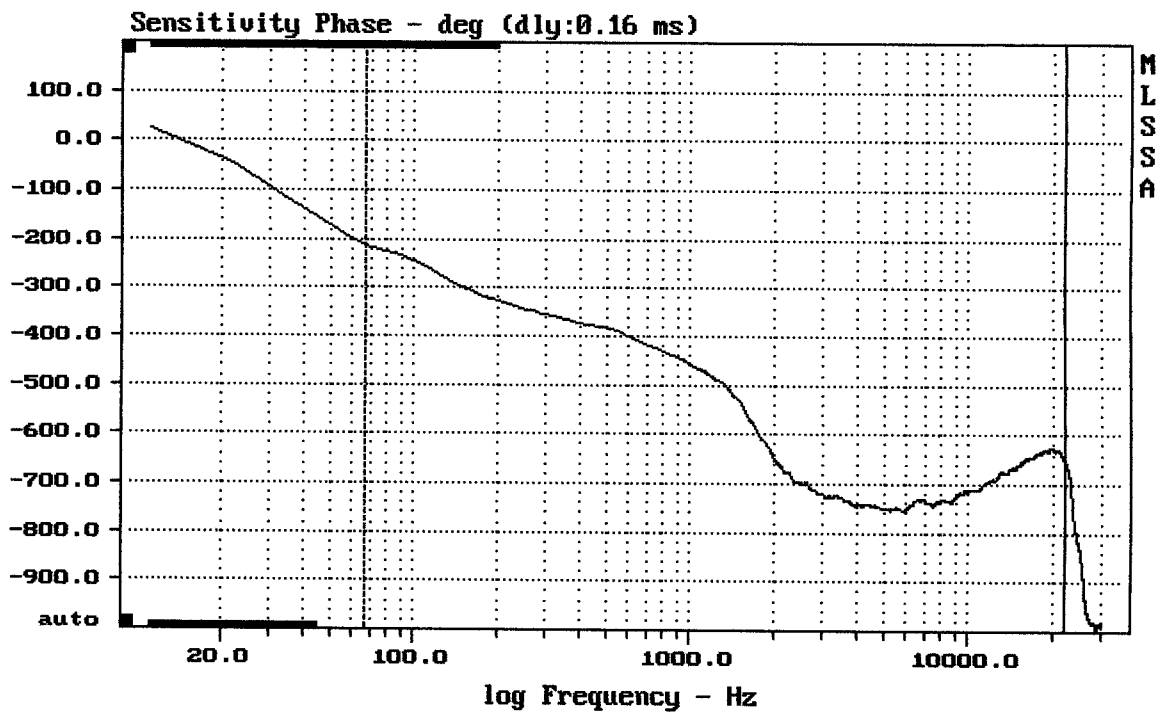
-78.02 dB, 2353 Hz (53), 1.760 msec (17)



mean: 0.0001703, rms: 0.0009862, std: 0.0009714, max: 0.003287, min: -0.001963

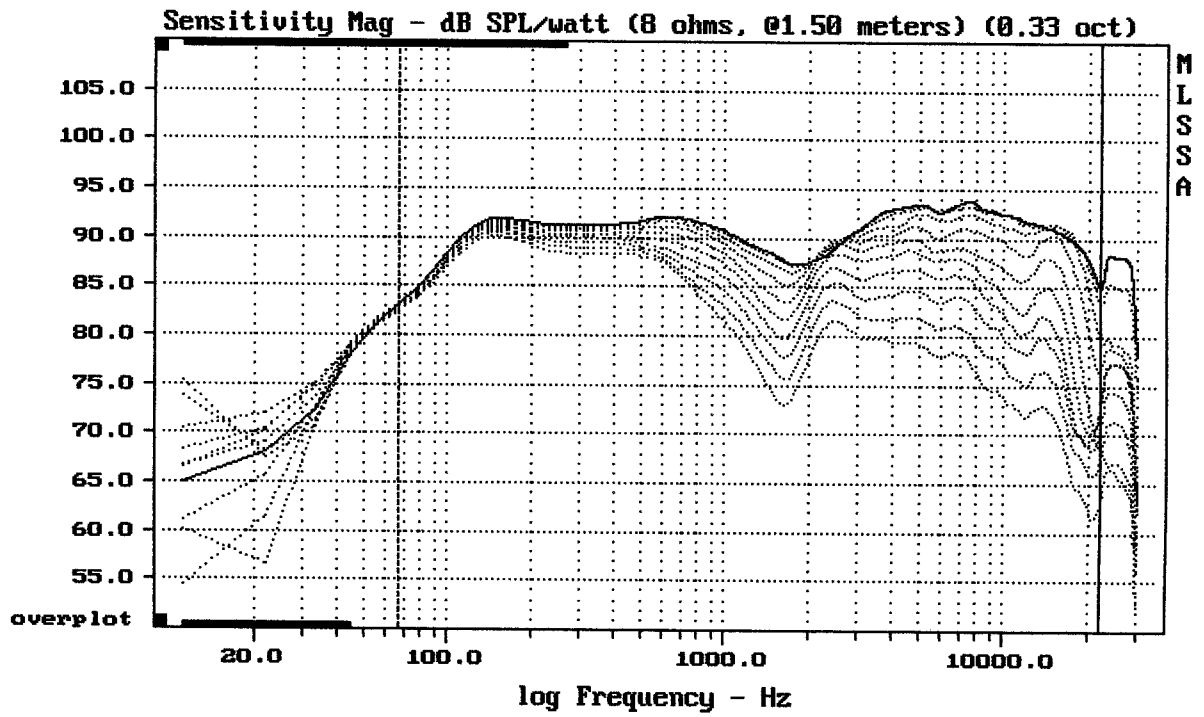
MACKIE HR626 THX

MLSSA: Time Domain



mean: -668.4, rms: 673.3, std: 81.11, max: -212, min: -754.6

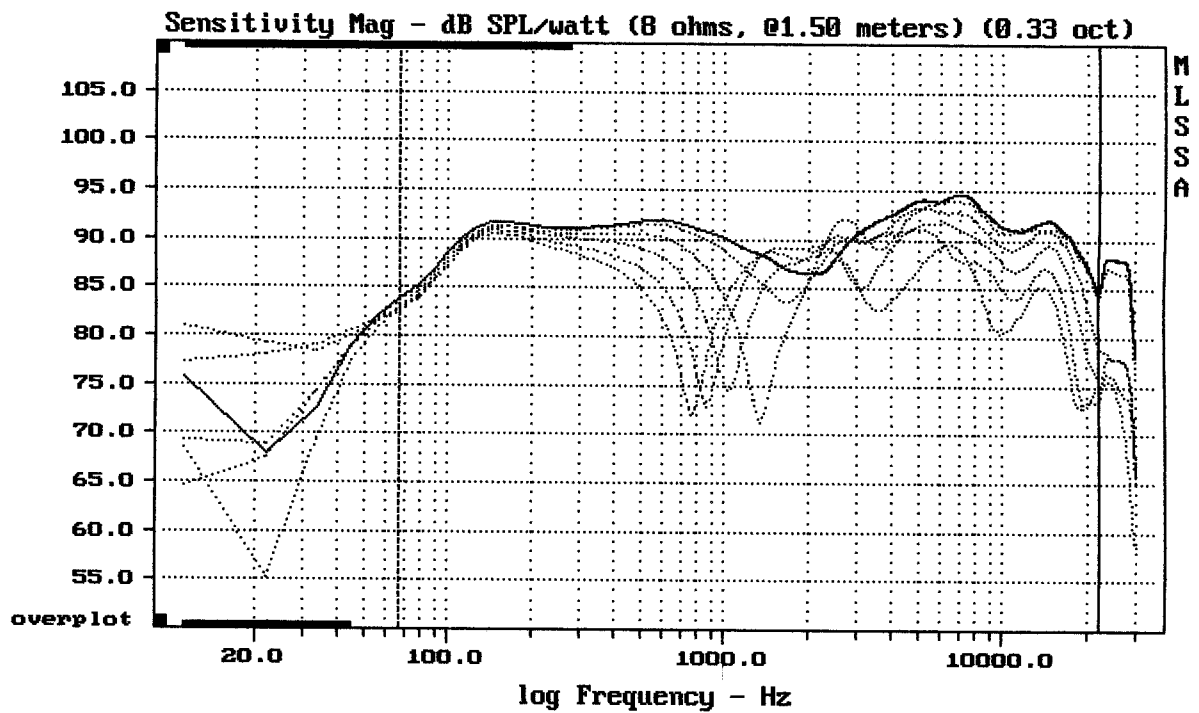
MACKIE HR626 THX



Overlay Compare: dev= +18/-7.8, std= 5.4, avg= -18

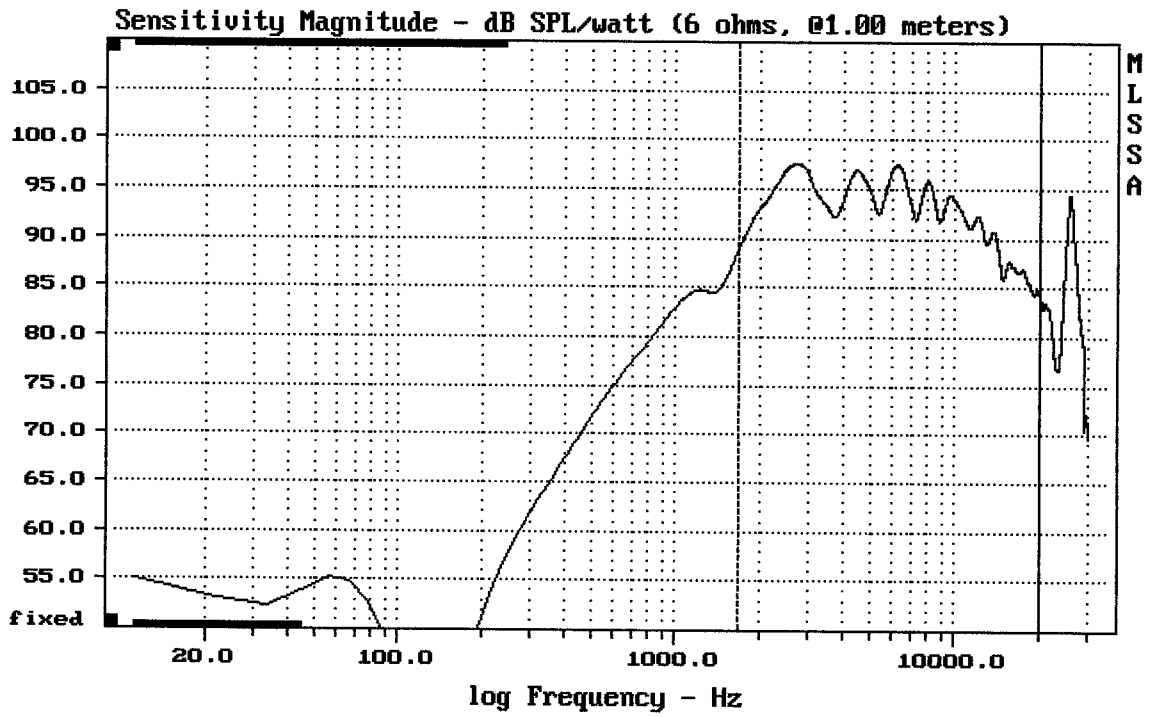
MACKIE HR626 THX

MLSSA: Frequency Domain



Overlay Compare: dev= +11/-11, std= 4.3, avg= -8.7

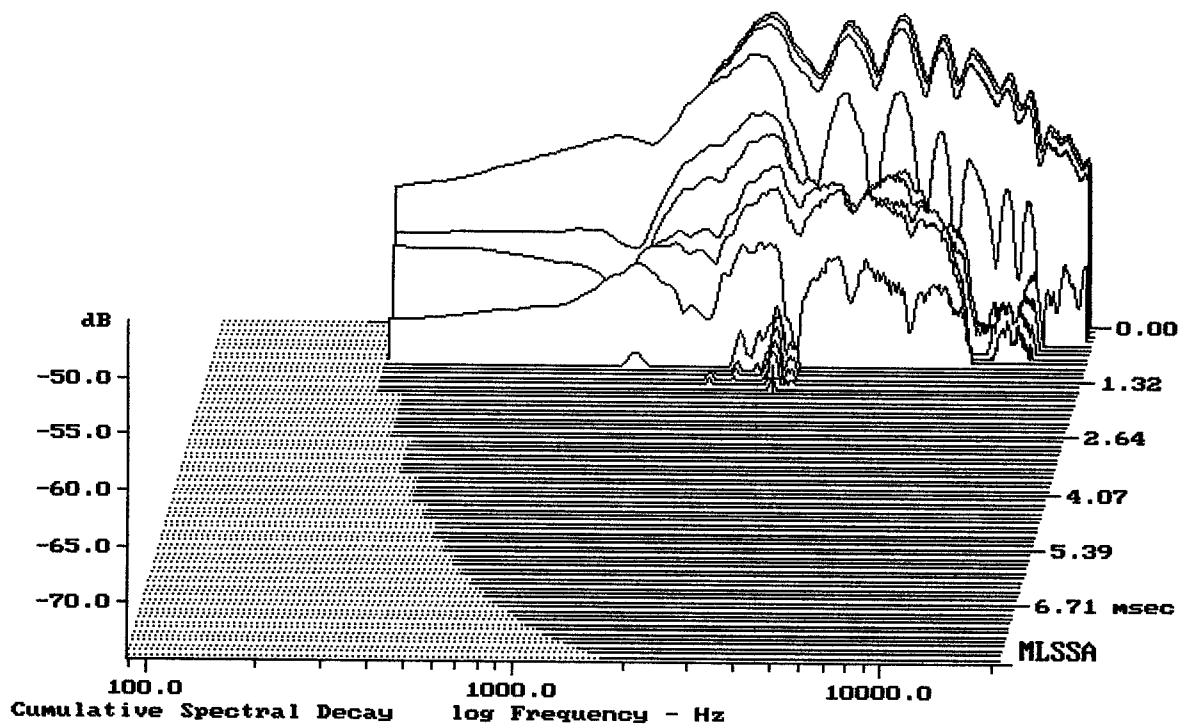
MACKIE HR626 THX



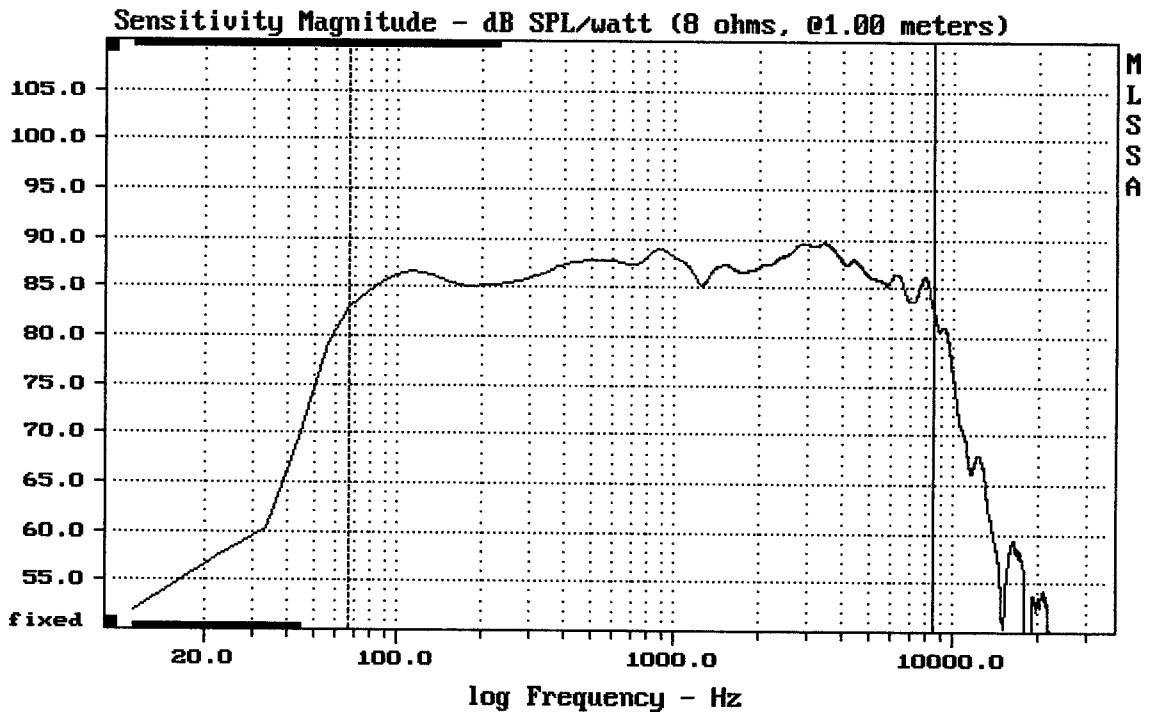
Level (1698:19997 Hz) = 94.02 dB SPL/watt (6 ohms, @1.00 meters)

TWEETER FROM MACKIE HR626

MLSSA: Frequency Domain



-74.11 dB, 3107 Hz (70), 1.540 msec (15)



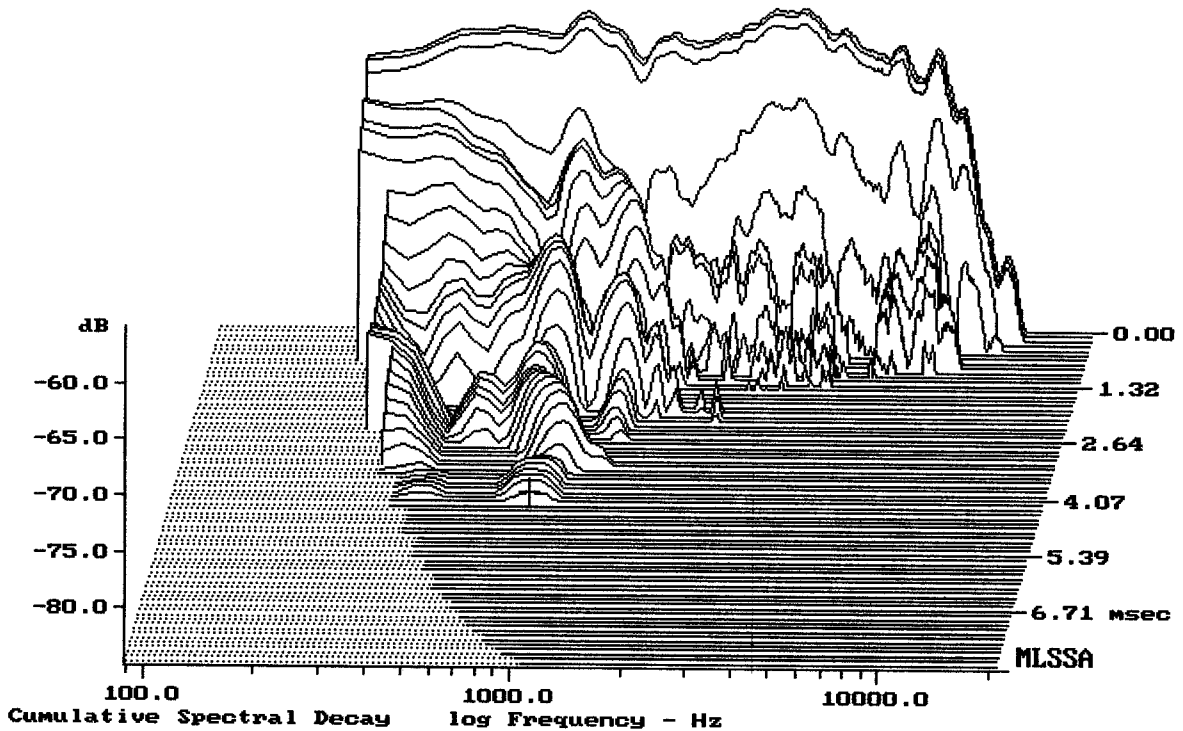

---

Level (67:8501 Hz) = 86.91 dB SPL/watt (8 ohms, @1.00 meters)

---

6.5" P18SJ-05-0BCN FROM MACKIE HR626

MLSSA: Frequency Domain



-84.17 dB, 843 Hz (19), 4.180 msec (39)

Measured Data

QC Limits

Line	Parameter	Value	Units
1	RMSE-free	0.15	Ohms
2	Fs	44.02	Hz
3	Re	5.80	Ohms[dc]
4	Res	24.24	Ohms
5	Qms	2.93	
6	Qes	0.70	
7	Qts	0.57	
8	L1	0.42	mH
9	L2	0.59	mH
10	R2	3.03	Ohms
11	RMSE-load	0.27	Ohms
12	Vas(Sd)	25.04	liters
13	Mms	12.92	grams
14	Cms	1012	$\mu\text{M}/\text{Newton}$
15	B1	5.43	Tesla-M
16	SPLref(Sd)	86.7	dB[Re]
17	Rub-index	0.01	

Method: Mass-loaded (10.00 grams)

Area (Sd): 132.73 sq cm

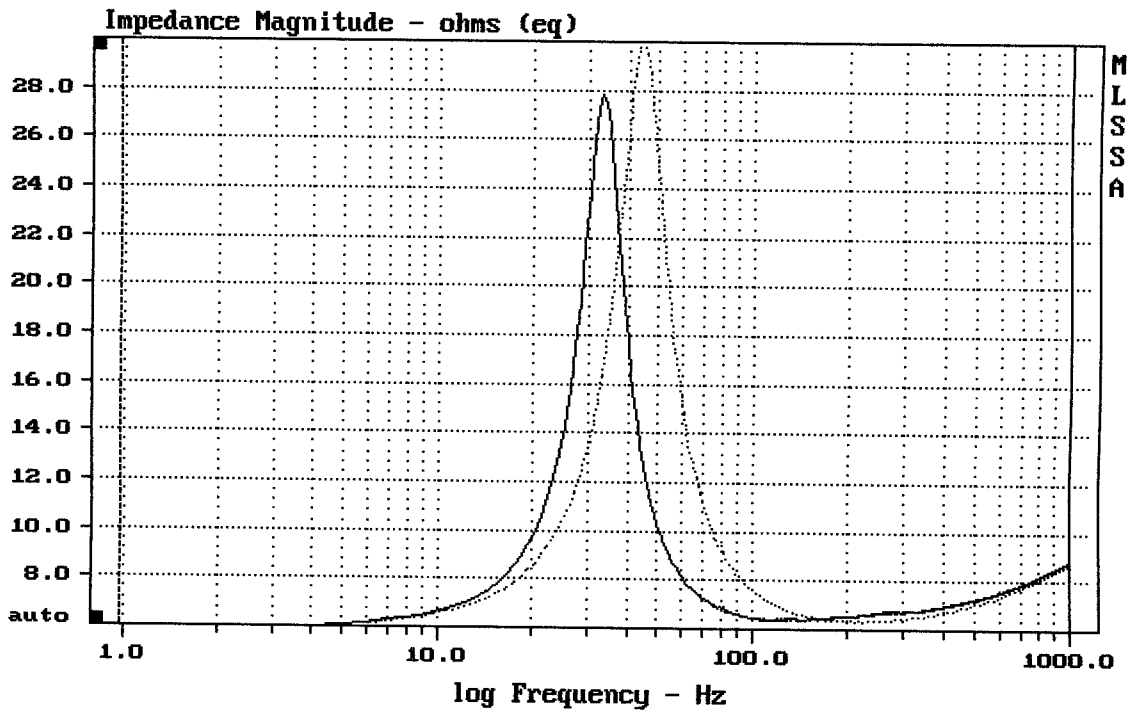
DCR mode: Measure (-0.06 ohms)

QC file: CLOSED

Analysis successful. Shift in Fs = -25.0% (-20% to -50% is recommended).

6,5" P18SJ-05-08CN FROM MACKIE HR626

MLSSA: Parameters



mean: 7.883, rms: 8.381, std: 2.845, max: 30.02, min: 5.86

DTTO

MLSSA: Frequency Domain