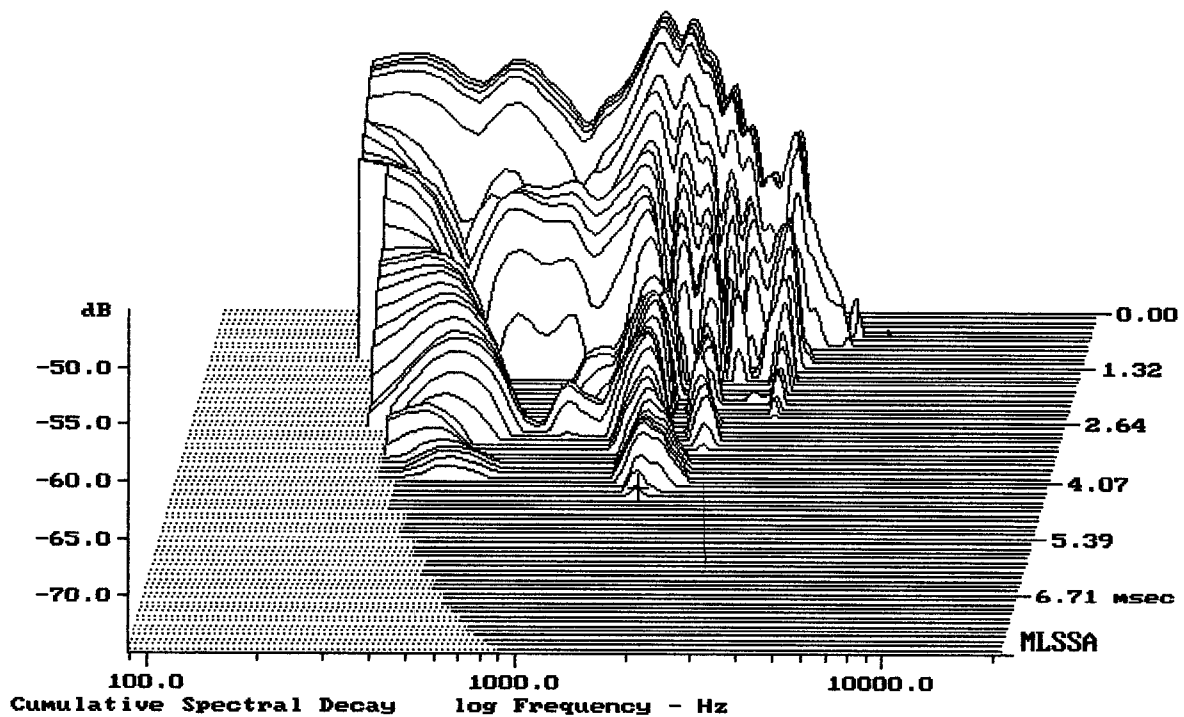


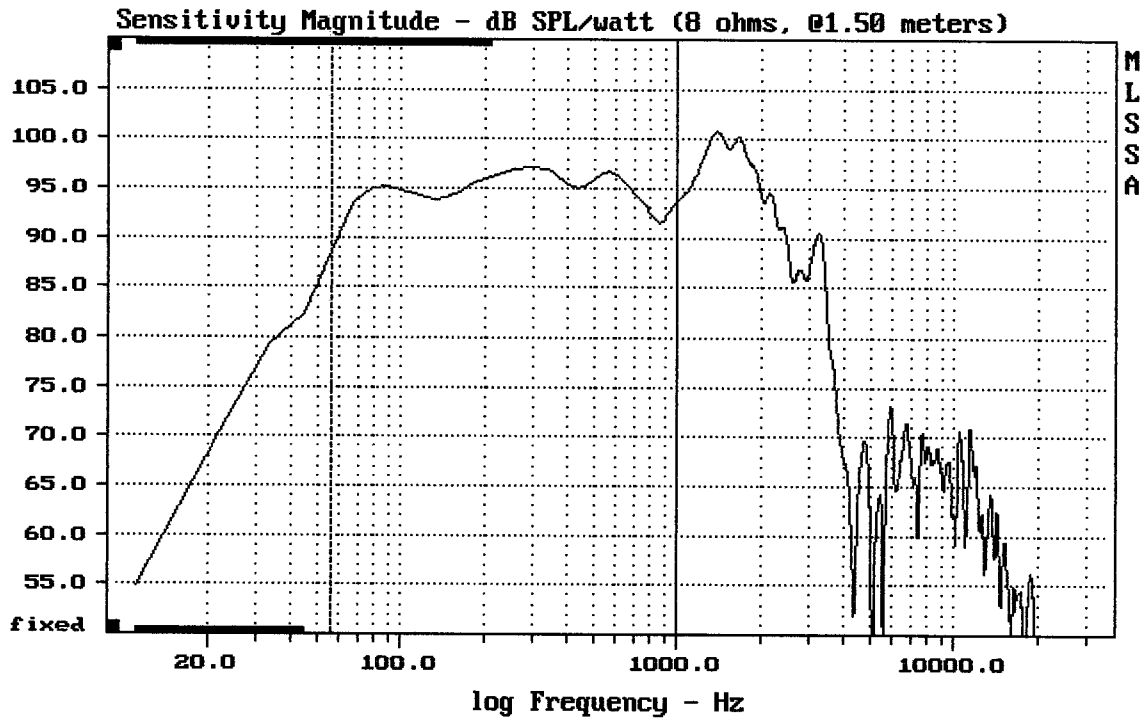
Level (55:2397 Hz) = 95.83 dB SPL/watt (8 ohms, @1.50 meters)

L18P400

MLSSA: Frequency Domain



-74.31 dB, 1642 Hz (37), 4.400 msec (41)



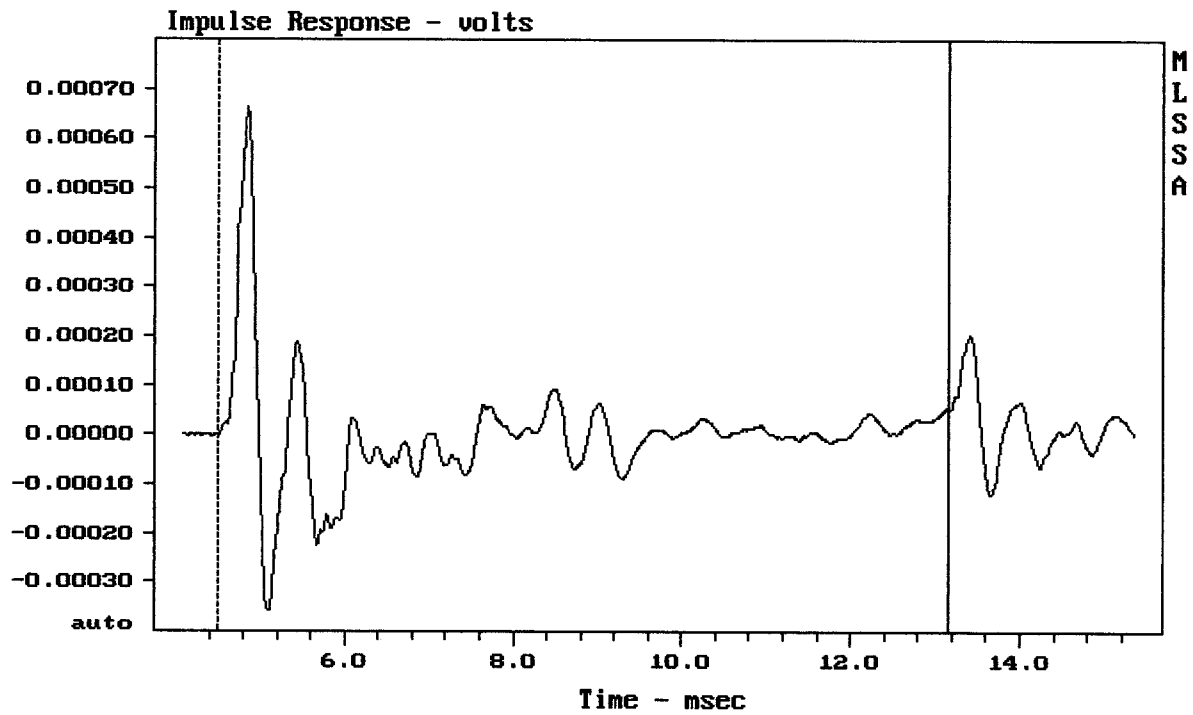

---

Level (55:999 Hz) = 95.06 dB SPL/watt (8 ohms, @1.50 meters)

---

L18P400

MLSSA: Frequency Domain




---

mean: -1.748e-007, rms: 0.0001104, std: 0.0001104, max: 0.000663, min: -0.0003

---

L18P400

Measured Data

QC Limits

Line	Parameter	Value	Units
1	RMSE-free	0.68	Ohms
2	Fs	39.19	Hz
3	Re	4.89	Ohms[dc]
4	Res	117.27	Ohms
5	Qms	10.26	
6	Qes	0.43	
7	Qts	0.41	
8	L1	1.40	mH
9	L2	2.41	mH
10	R2	8.08	Ohms
11	RMSE-load	0.82	Ohms
12	Vas(Sd)	197.35	liters
13	Mms	176.29	grams
14	Cms	94	$\mu$ M/Newton
15	Bl	22.27	Tesla-M
16	SPLref(Sd)	96.3	dB[Re]
17	Rub-index	0.00	

Method: Mass-loaded (140.00 grams)

Area (Sd): 1225.42 sq cm

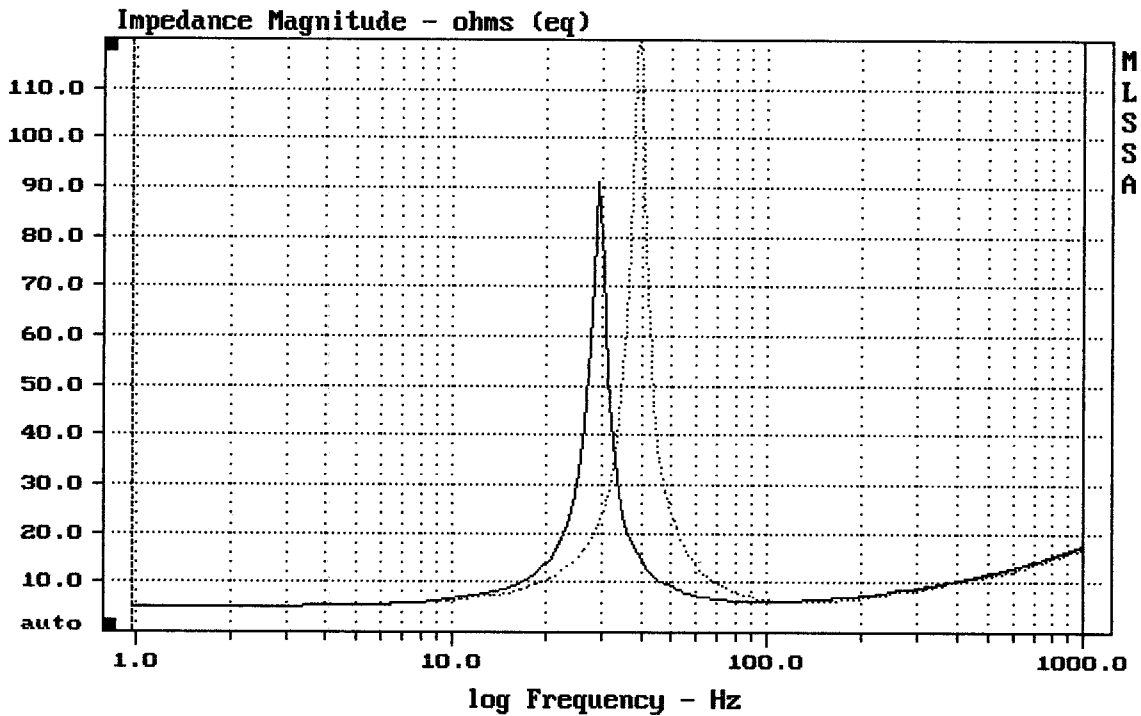
DCR mode: Measure (-0.07 ohms)

QC file: CLOSED

Analysis successful. Shift in Fs = -25.5% (-20% to -50% is recommended).

L18P400

MLSSA: Parameters



mean: 12.43, rms: 14.87, std: 8.16, max: 124.3, min: 4.922

MLSSA: Frequency Domain