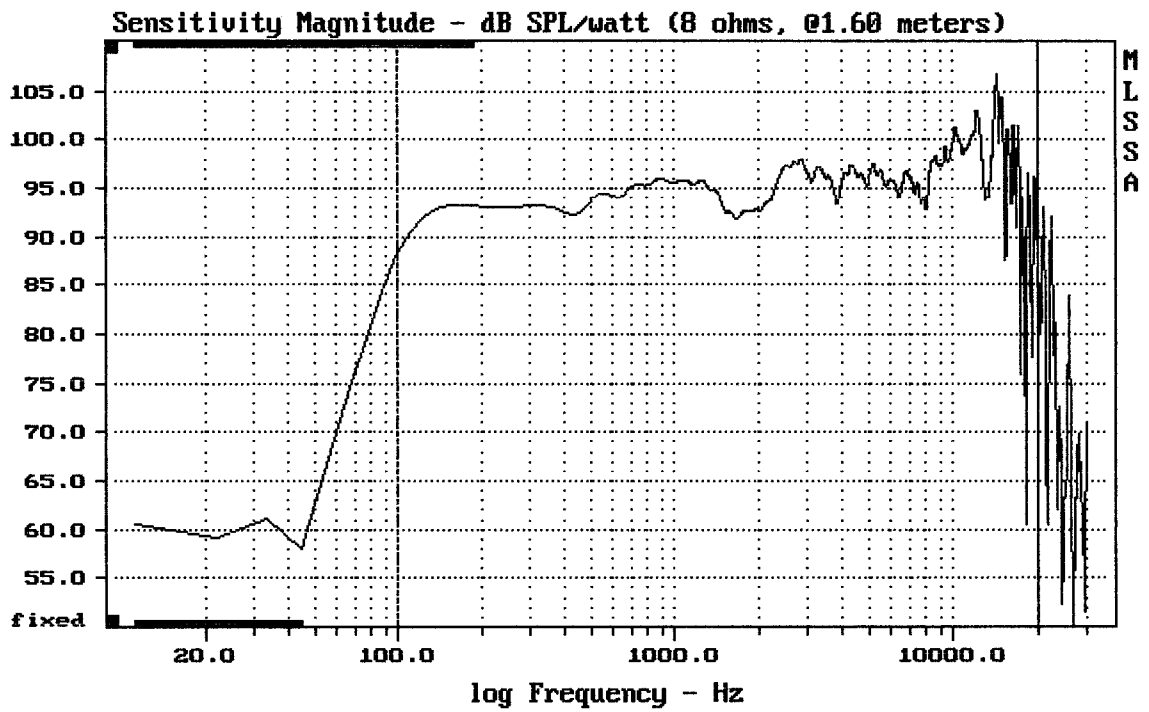


**E-shop:**

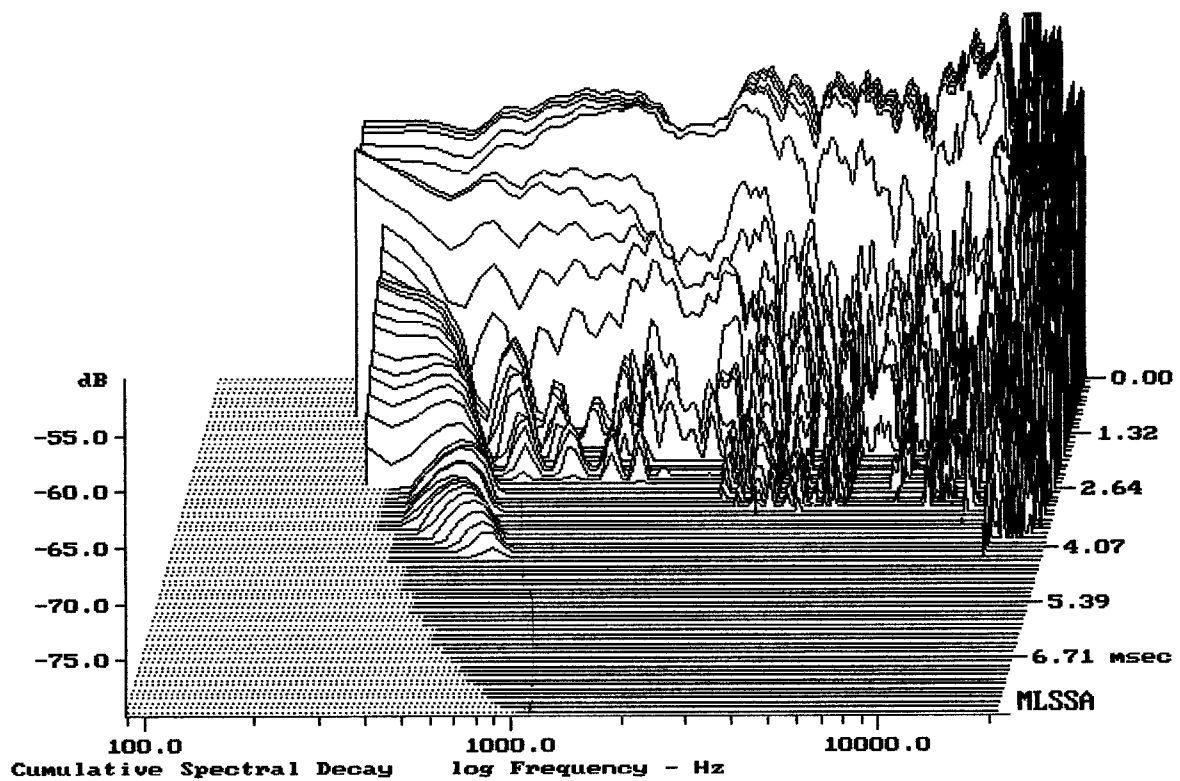
<http://eshop.prodance.cz/mw10/d-96323/>



Level (100:20000 Hz) = 95.78 dB SPL/watt (8 ohms, @1.60 meters)

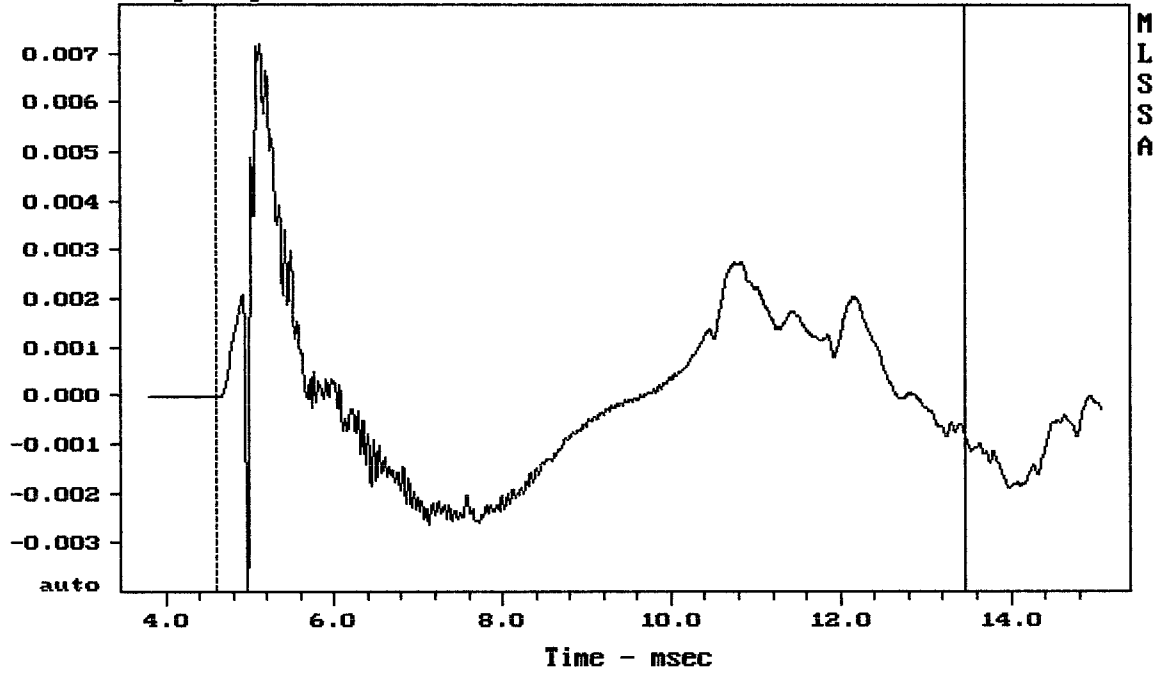
EAW MW10

MLSSA: Frequency Domain



-79.40 dB, 3196 Hz (72), 3.000 msec (29)

Step Response - volts



---

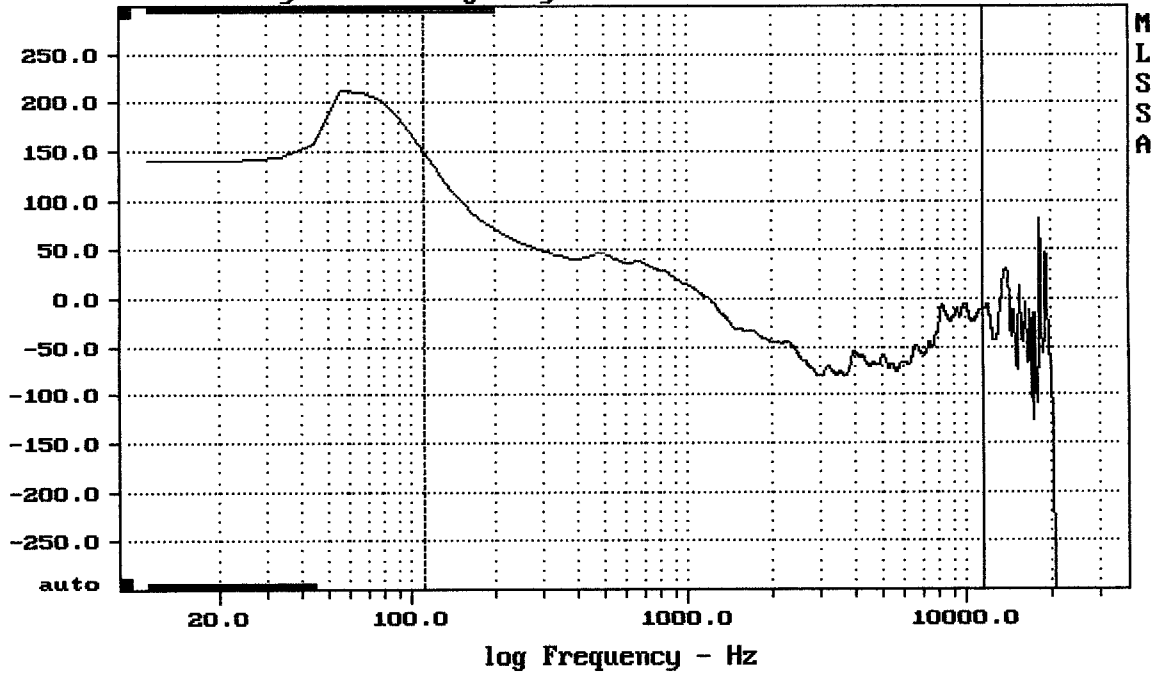
mean: 0.0001236, rms: 0.001826, std: 0.001822, max: 0.007184, min: -0.003942

---

EAW MW10

MLSSA: Time Domain

Sensitivity Phase - deg (dly:0.39 ms)

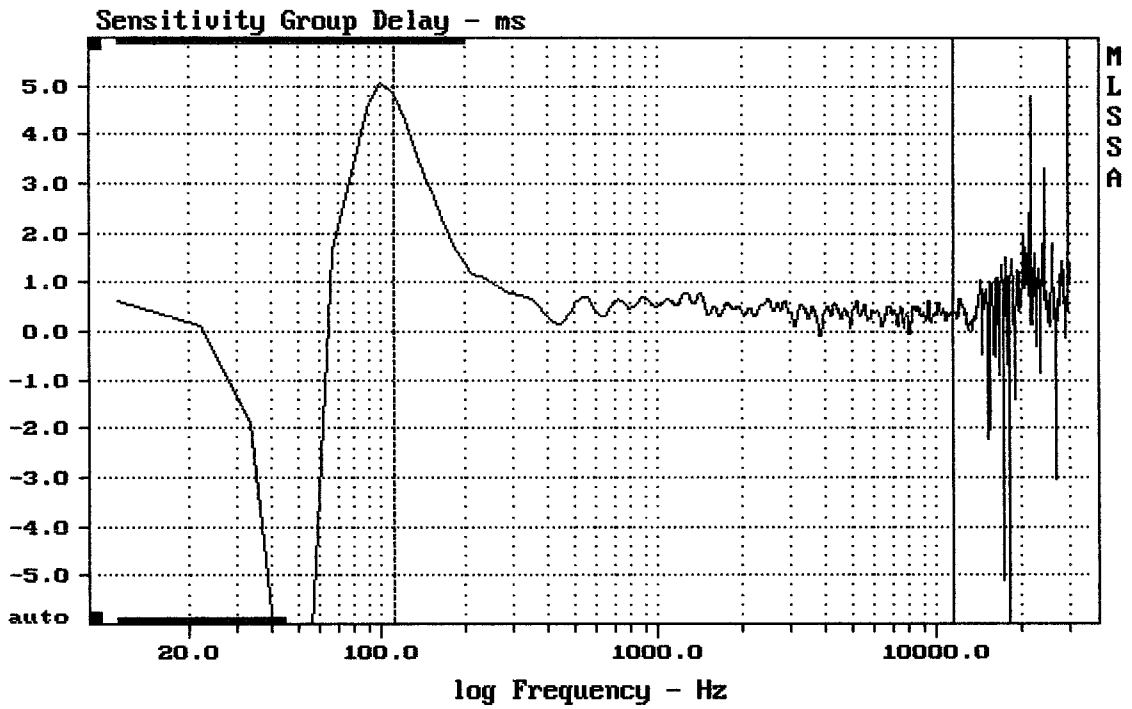


---

mean: -35.67, rms: 49.43, std: 34.22, max: 150.4, min: -80.66

---

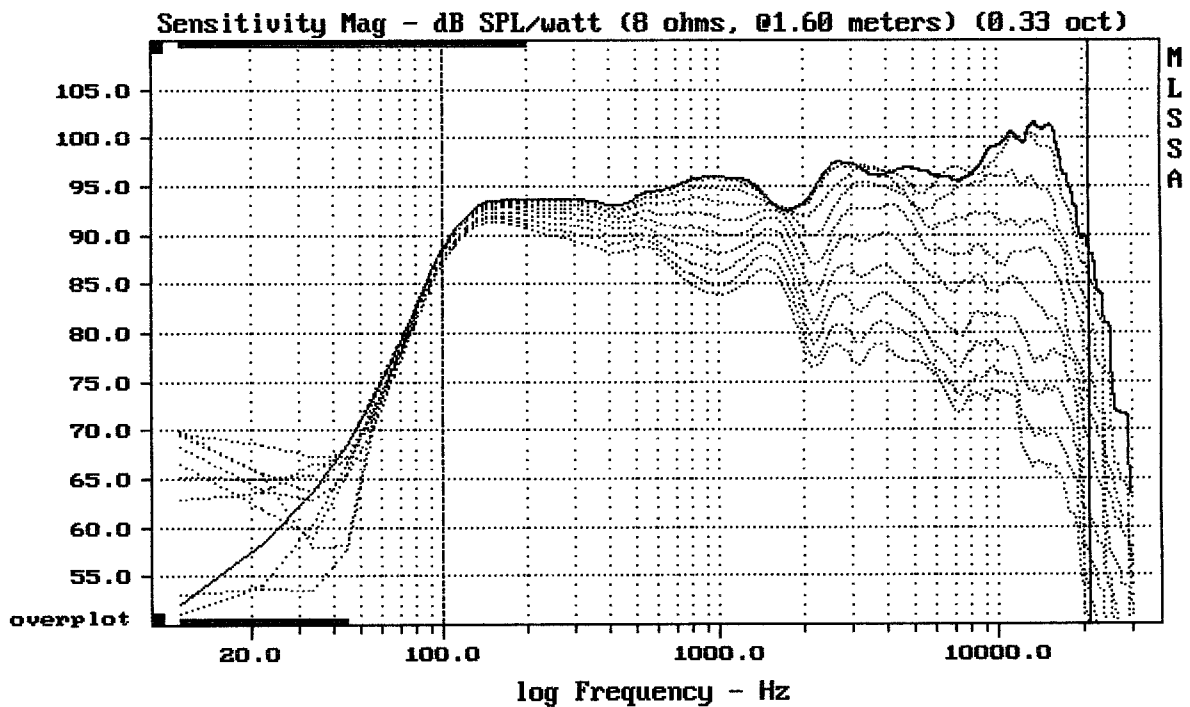
EAW MW10



mean: 0.4279, rms: 0.5214, std: 0.2979, max: 4.837, min: -0.08432

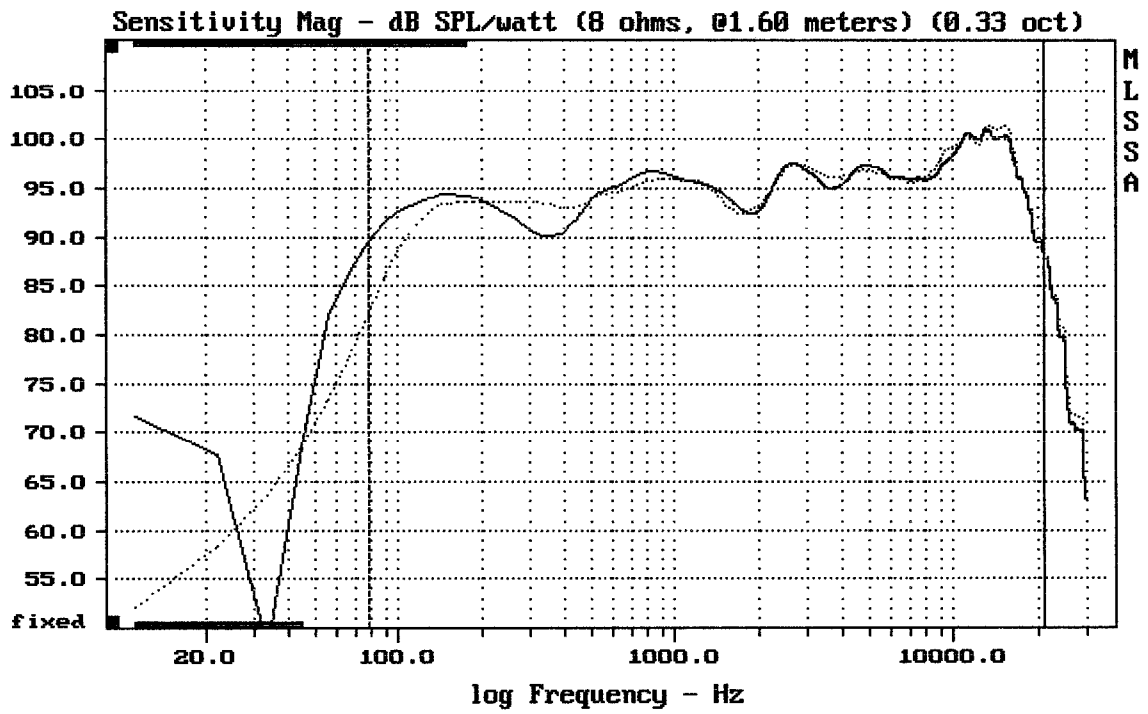
EAW MW10

MLSSA: Frequency Domain



Overlay Compare: dev= +25/-13, std= 8.4, avg= -26

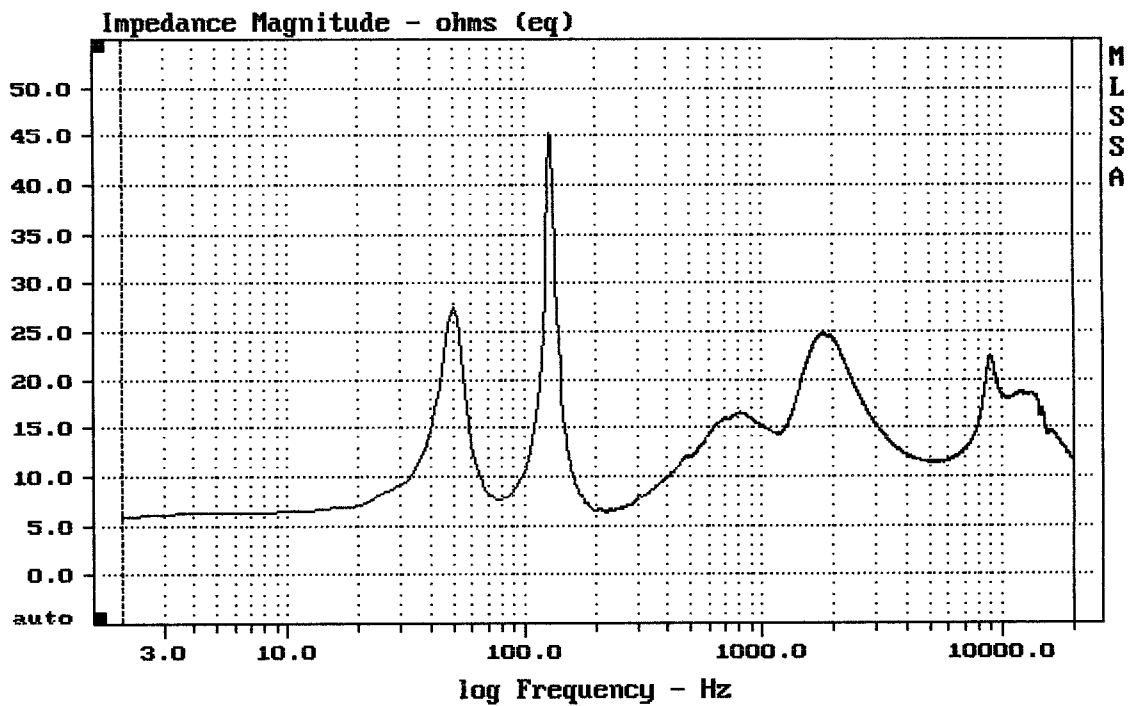
EAW MW10



Overlay Compare: dev= +7.7/-3.1, std= 0.61, avg= -0.25

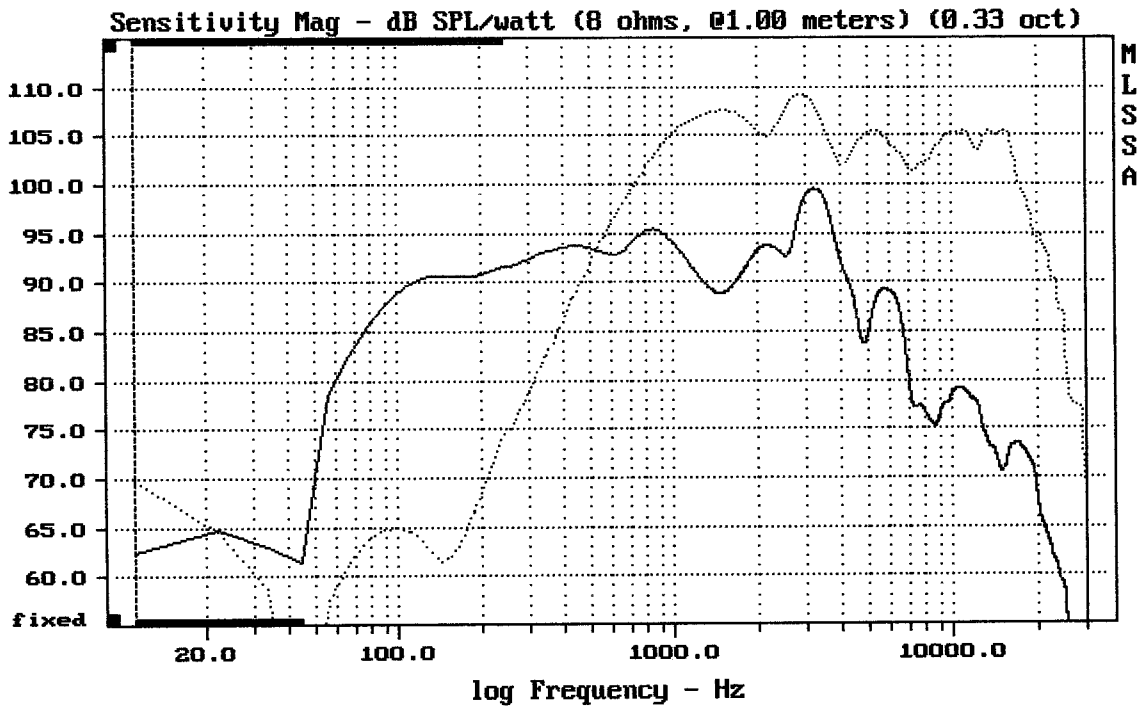
EAW MW10

MLSSA: Frequency Domain



mean: 15.6, rms: 15.99, std: 3.488, max: 45.24, min: 5.818

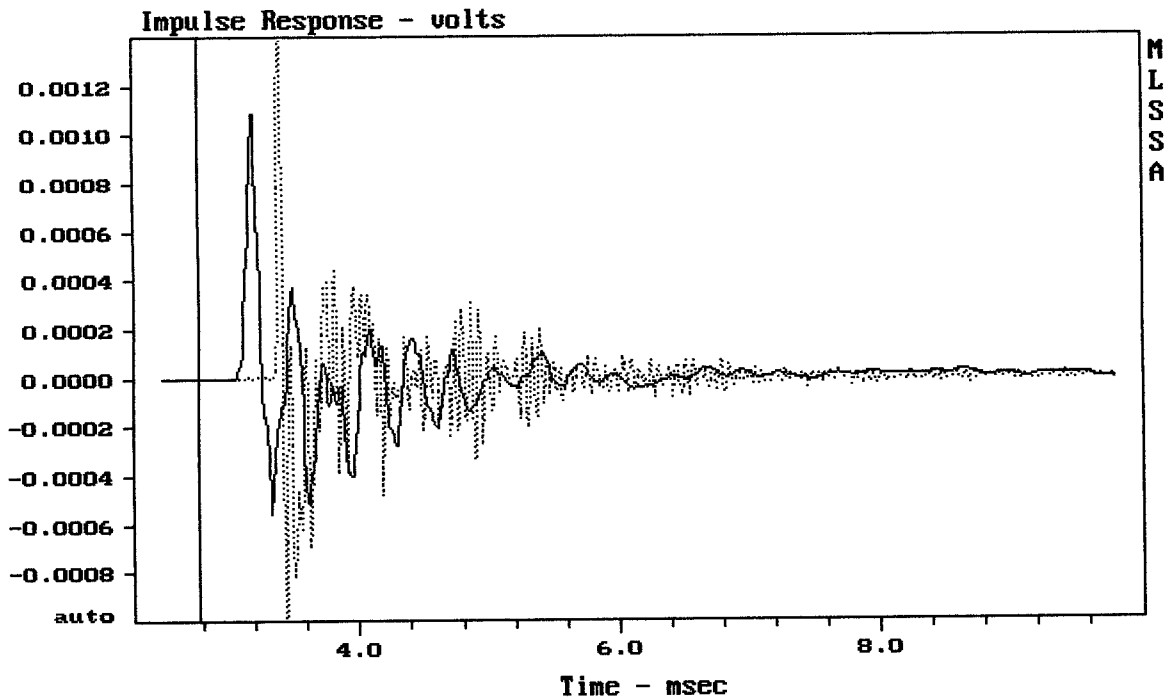
EAW MW10



CURSOR:  $dy = 22.9378$   $x = 30007.1014$  (2704)

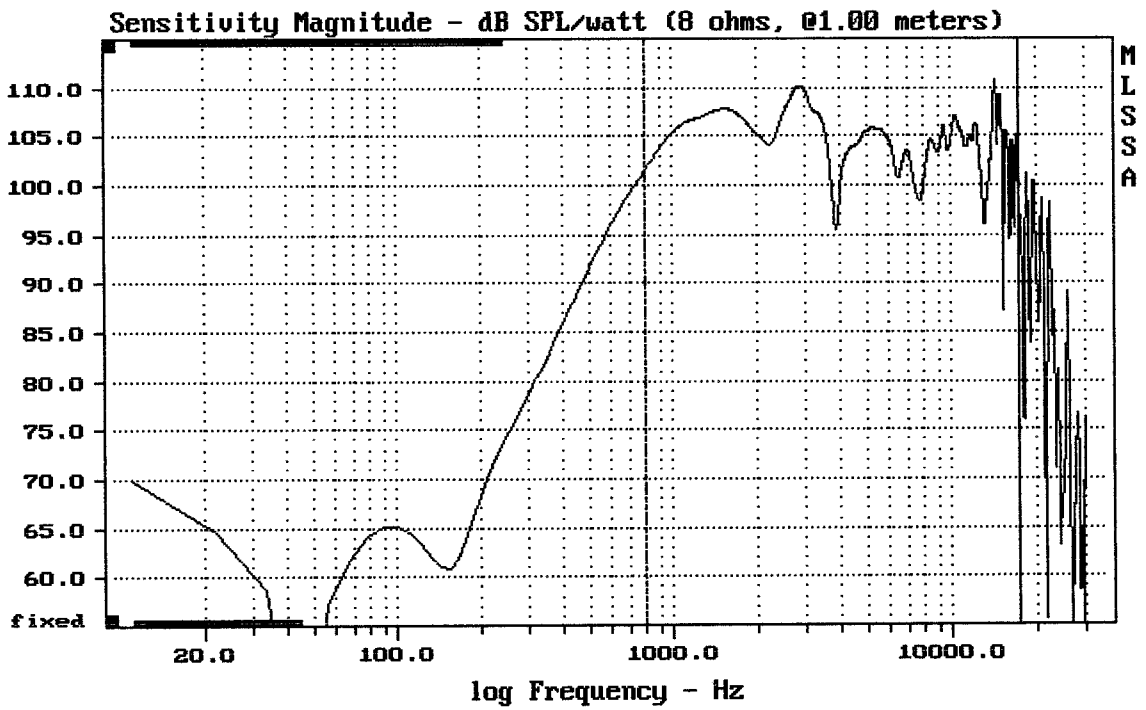
MW10

MLSSA: Frequency Domain



CURSOR:  $dy = 1.11486e-007$   $x = 2.7610$  (251)

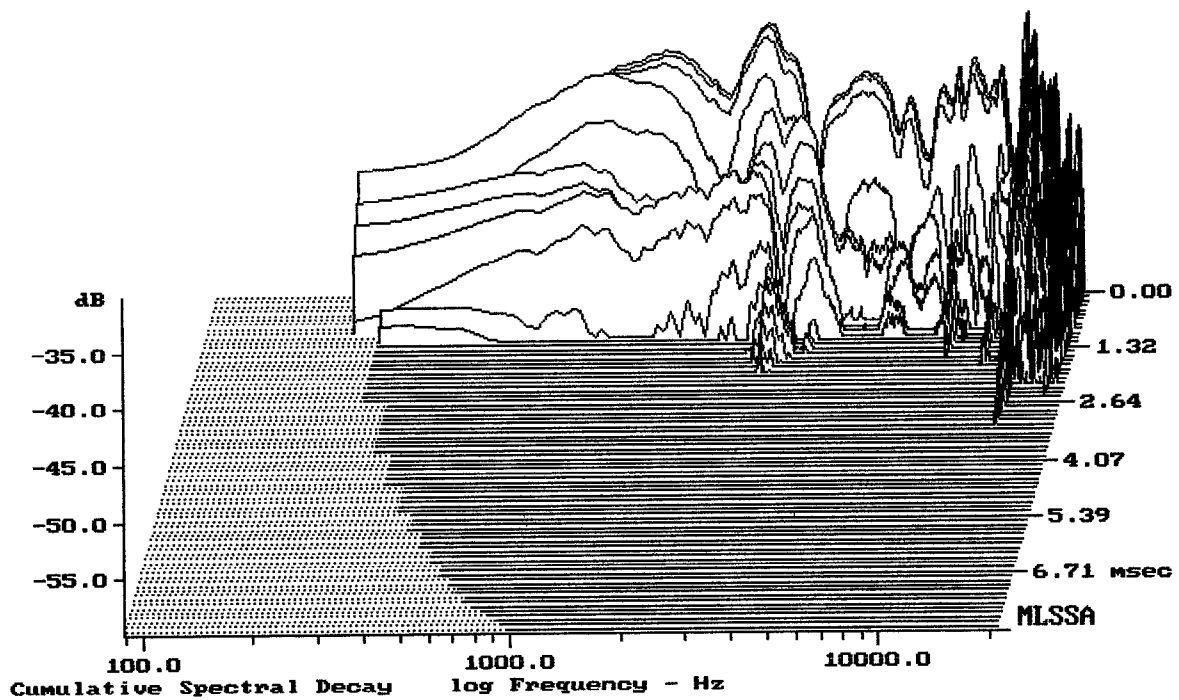
MW10



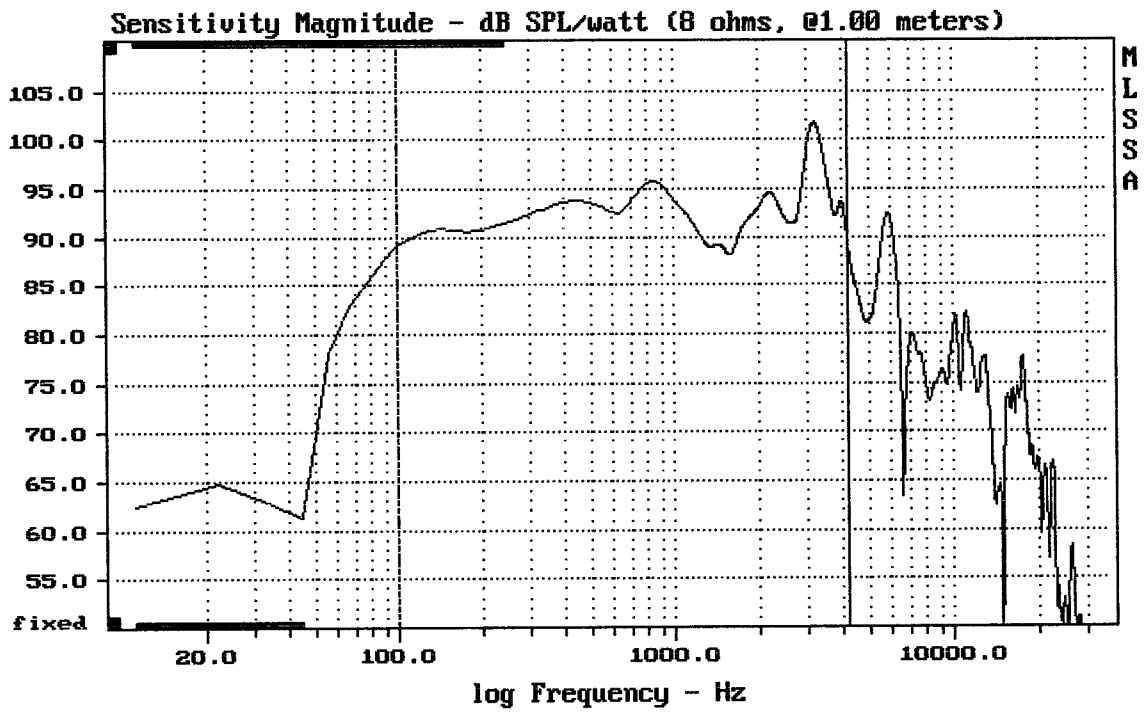
Level (799:17301 Hz) = 105.61 dB SPL/watt (8 ohms, @1.00 meters)

MW10

MLSSA: Frequency Domain



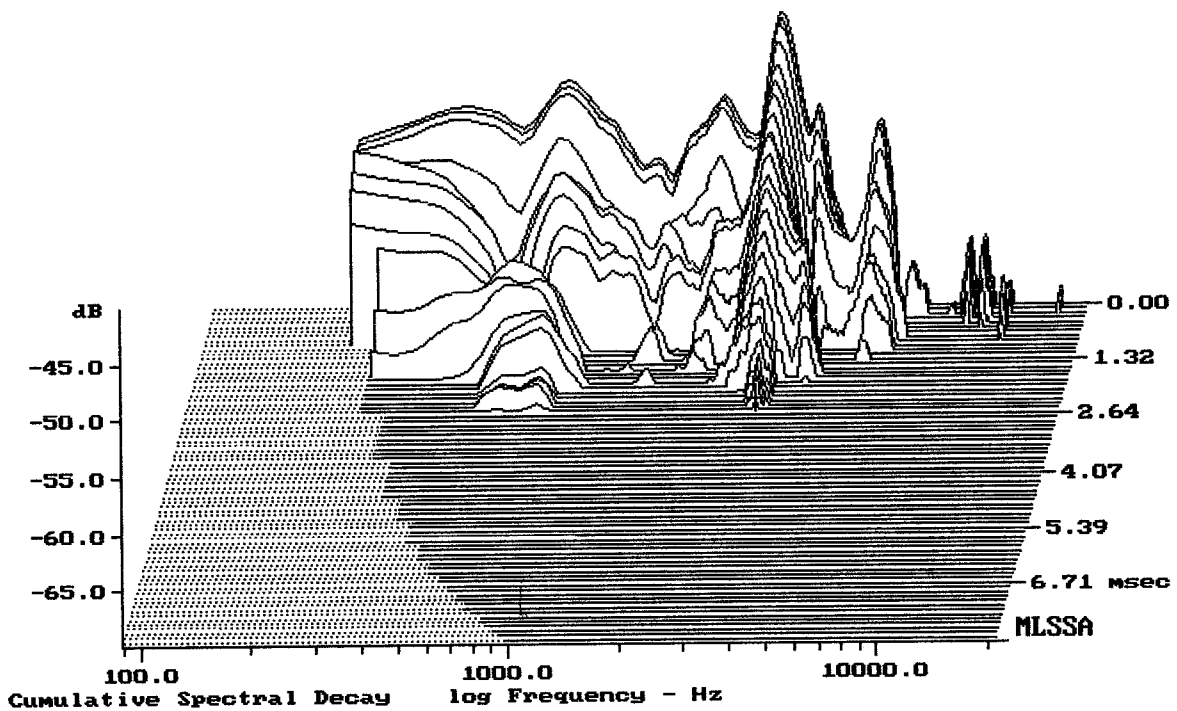
-58.78 dB, 3063 Hz (69), 1.870 msec (18)



Level (100:4206 Hz) = 93.41 dB SPL/watt (8 ohms, @1.00 meters)

MW10

MLSSA: Frequency Domain



-68.86 dB, 3152 Hz (71), 2.530 msec (24)



Measured Data

QC Limits

Line	Parameter	Value	Units
1	RMSE-free	0.33	Ohms
2	Fs	84.08	Hz
3	Re	5.22	Ohms[dc]
4	Res	75.93	Ohms
5	Qms	7.78	
6	Qes	0.53	
7	Qts	0.50	
8	L1	0.56	mH
9	L2	0.98	mH
10	R2	5.33	Ohms
11	RMSE-load	0.62	Ohms
12	Vas(Sd)	19.94	liters
13	Mms	27.50	grams
14	Cms	130	$\mu\text{M}/\text{Newton}$
15	B1	11.91	Tesla-M
16	SPLref(Sd)	95.3	dB[Re]
17	Rub-index	0.00	

Method: Mass-loaded (40.00 grams)

Area (Sd): 330.06 sq cm

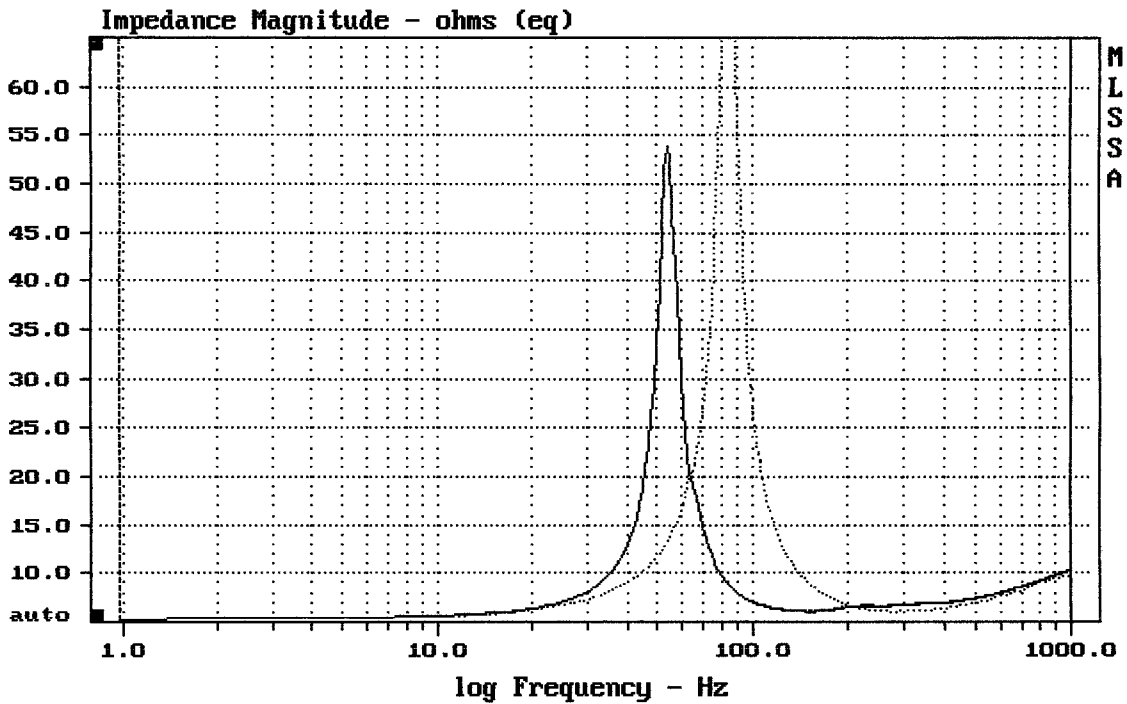
DCR mode: Measure (-0.08 ohms)

QC file: CLOSED

Analysis successful. Shift in Fs = -35.9% (-20% to -50% is recommended).

10" FROM MW10

MLSSA: Parameters



mean: 9.521, rms: 12.64, std: 8.321, max: 81.59, min: 5.276

MLSSA: Frequency Domain