

Measured Data

Line	Parameter	Value	Units
1	RMSE-free	1.11	Ohms
2	Fs	50.65	Hz
3	Re	5.60	Ohms[dc]
4	Res	264.98	Ohms
5	Qms	8.07	
6	Qes	0.17	
7	Qts	0.17	
8	L1	0.55	mH
9	L2	1.80	mH
10	R2	3.76	Ohms
11	RMSE-load	1.10	Ohms
12	Vas(Sd)	86.04	liters
13	Mms	45.43	grams
14	Cms	217	$\mu\text{M}/\text{Newton}$
15	B1	21.79	Tesla-M
16	SPLref(Sd)	100.0	dB[Re]
17	Rub-index	0.01	

Method: Mass-loaded (40.00 grams)

Area (Sd): 530.93 sq cm

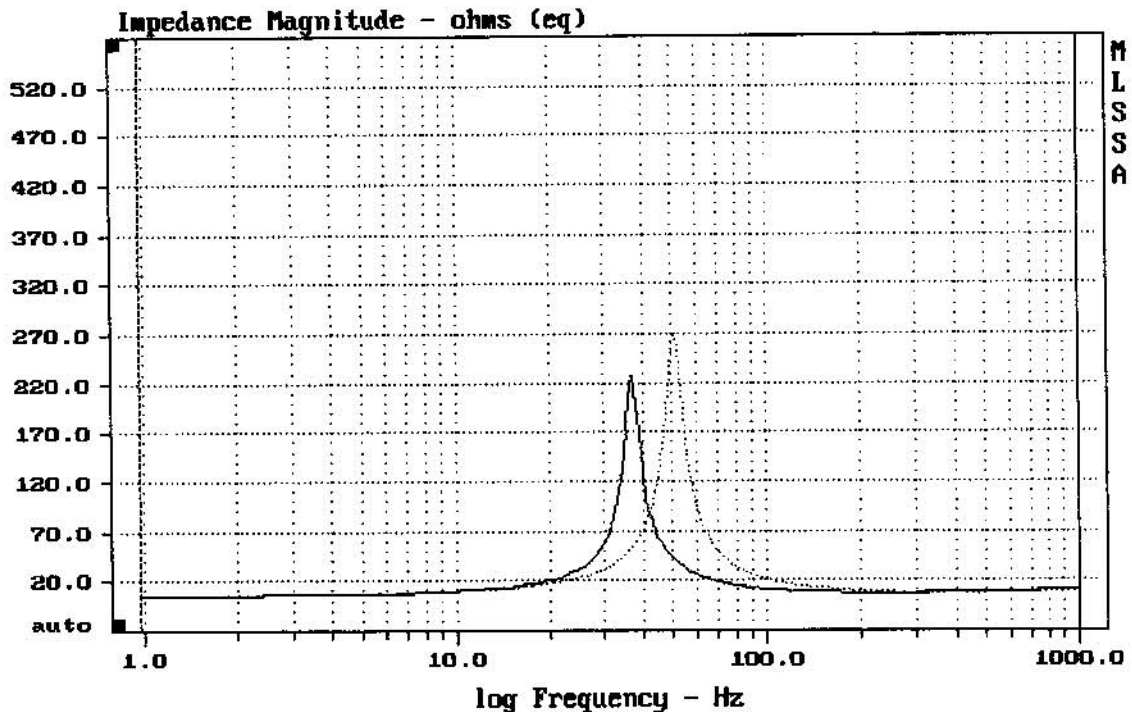
DCR mode: Measure (-0.07 ohms)

QC file: CLOSED

Analysis successful. Shift in Fs = -26.6% (-20% to -50% is recommended).

12MH32

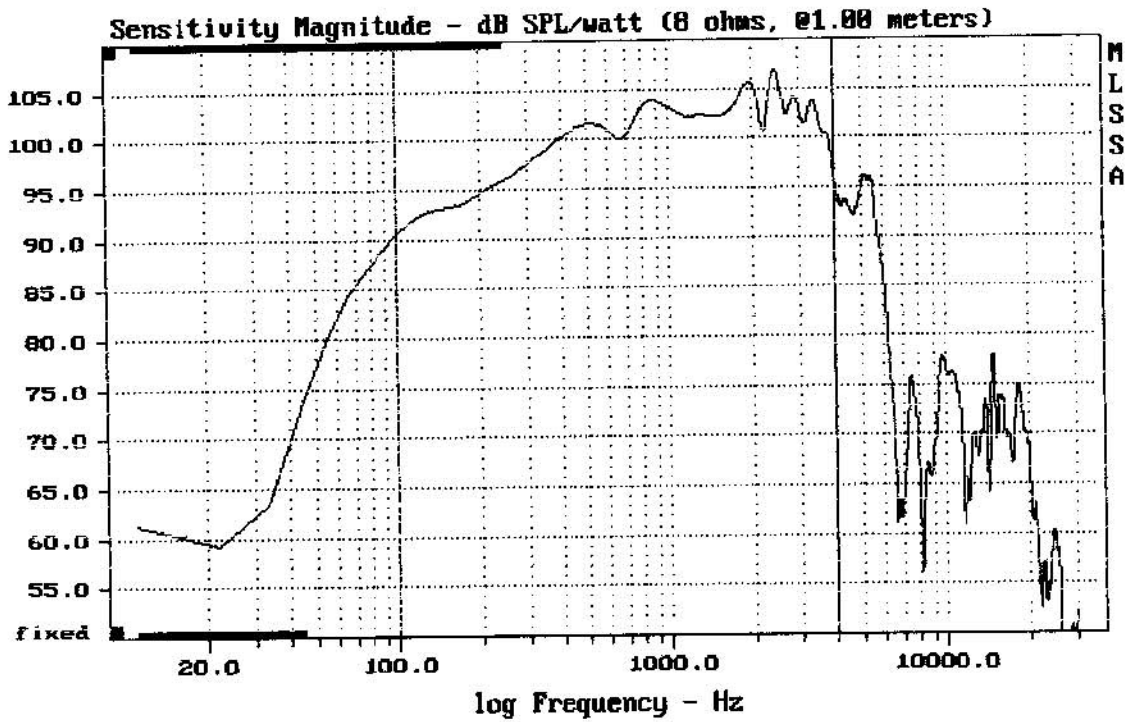
MLSSA: Parameters



CURSOR: dy = -0.59691 x = 1000.9766 (1025)

DTTO

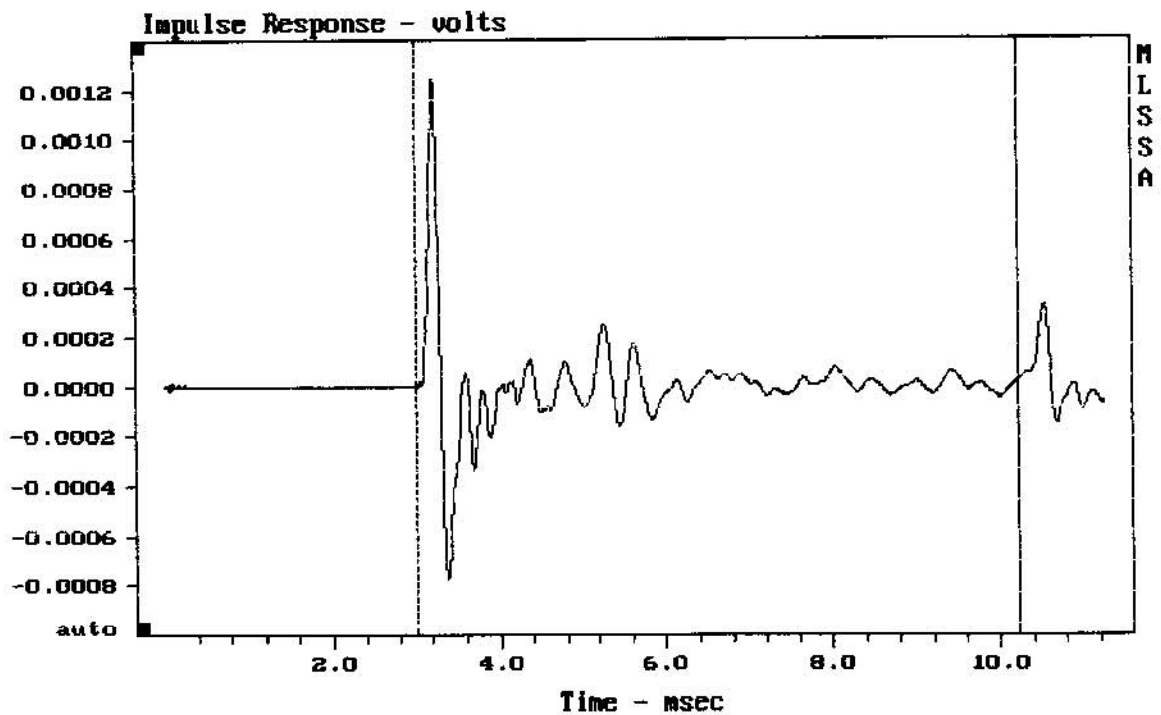
MLSSA: Frequency Domain



Level (100:3995 Hz) = 101.14 dB SPL/watt (8 ohms, @1.00 meters)

12MH32

MLSSA: Frequency Domain



CURSOR: y = 2.59795e-005 x = 10.2300 (930)

12MH32