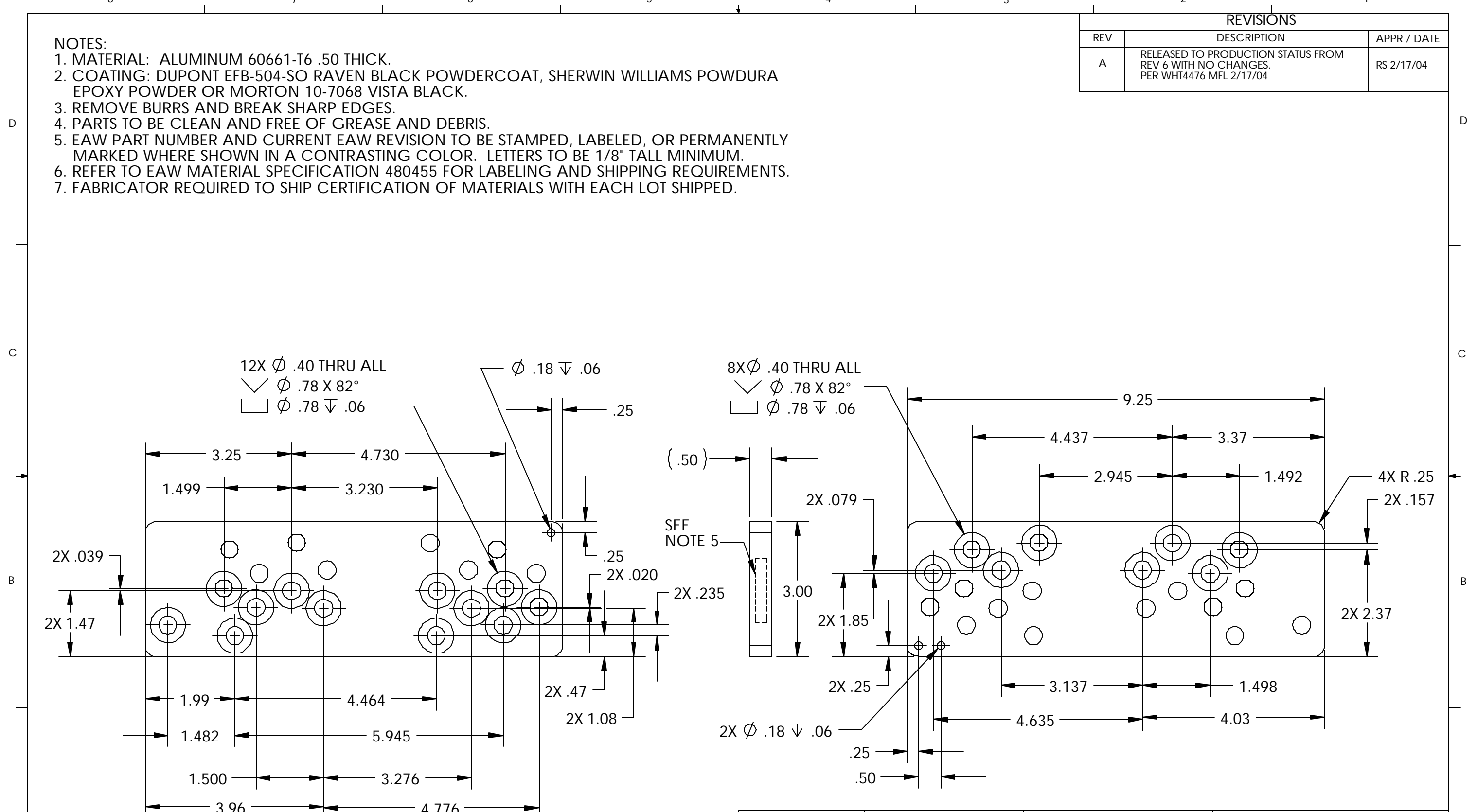


- NOTES:
1. MATERIAL: ALUMINUM 60661-T6 .50 THICK.
  2. COATING: DUPONT EFB-504-SO RAVEN BLACK POWDERCOAT, SHERWIN WILLIAMS POWDURA EPOXY POWDER OR MORTON 10-7068 VISTA BLACK.
  3. REMOVE BURRS AND BREAK SHARP EDGES.
  4. PARTS TO BE CLEAN AND FREE OF GREASE AND DEBRIS.
  5. EAW PART NUMBER AND CURRENT EAW REVISION TO BE STAMPED, LABELED, OR PERMANENTLY MARKED WHERE SHOWN IN A CONTRASTING COLOR. LETTERS TO BE 1/8" TALL MINIMUM.
  6. REFER TO EAW MATERIAL SPECIFICATION 480455 FOR LABELING AND SHIPPING REQUIREMENTS.
  7. FABRICATOR REQUIRED TO SHIP CERTIFICATION OF MATERIALS WITH EACH LOT SHIPPED.

REVISIONS		
REV	DESCRIPTION	APPR / DATE
A	RELEASED TO PRODUCTION STATUS FROM REV 6 WITH NO CHANGES. PER WHT4476 MFL 2/17/04	RS 2/17/04



<p>THIRD ANGLE PROJECTION</p> <p>THIS DRAWING IS THE PROPERTY OF EAW AND SHALL NOT BE COPIED, REPRODUCED, OR USED AS THE BASIS FOR MANUFACTURE OR SALE OF APPARATUS WITHOUT WRITTEN AUTHORIZATION. DO NOT SCALE DRAWING.</p>	<p>UNLESS OTHERWISE SPECIFIED: ALL DIMENSIONS ARE IN INCHES</p> <p>TOLERANCE IN INCHES        .X<math>\pm</math>.030 .XX<math>\pm</math>.010 .XXX<math>\pm</math>.005        FRACTIONS <math>\pm</math>1/32        ANGLES <math>\pm</math>1/2°</p> <p>(X.XX) = REF DIMS NO TOLERANCE IMPLIED</p> <p>TSC = THEORETICAL SHARP CORNER</p> <p>DIMENSIONS ACROSS CENTERLINES TO BE SYMMETRICAL</p>	STATUS PRODUCTION		<p><b>EAW</b> EASTERN ACOUSTIC WORKS  <small>ONE MAIN STREET WHITINSVILLE, MA 01588 USA</small></p>	
		APPROVALS	DATE		TITLE:
		DRAWN: M. LEBLANC	3/26/03		BRACKET/SPLAY/Front/KF730P
		CHECKED: RS	2/17/04		
DES ENG: TSD	2/17/04	<b>B</b> SHEET 1 OF 1	SCALE: 1:2		
MFG ENG: MD	2/18/04	DWG. NO. 0006417	REV A		