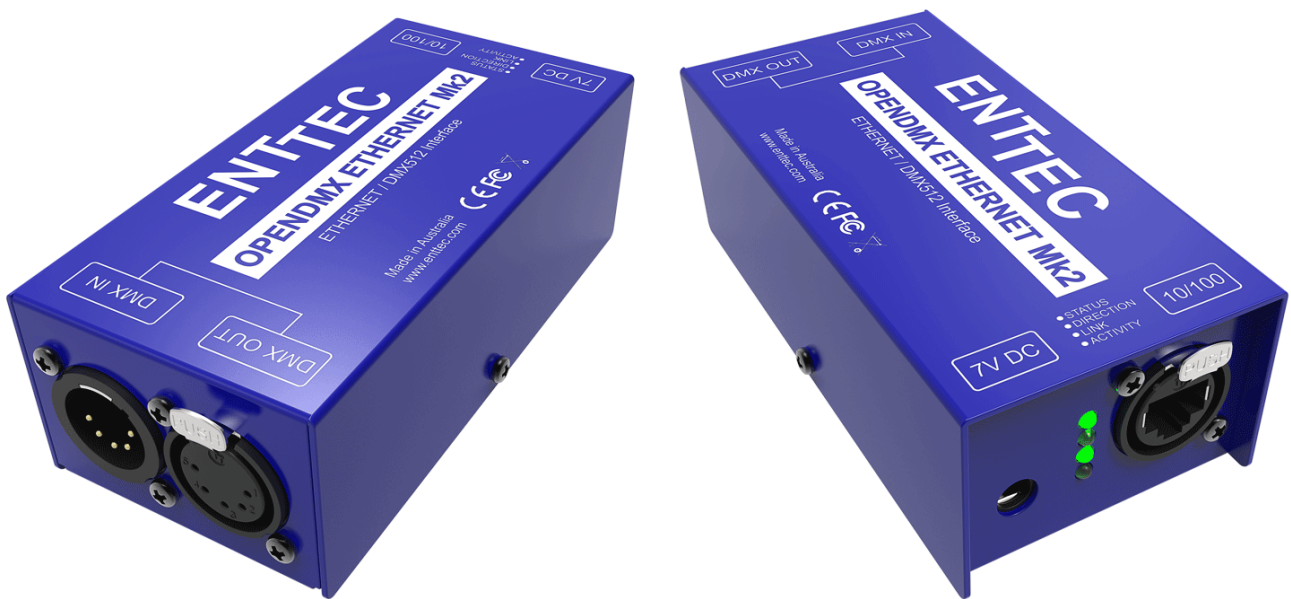


# ENTTEC

## Open DMX Ethernet Mk2

DMX-Ethernet gateway



Simple and easy to use, thanks to the built-in web interface, the ODE Mk2 supports the latest protocols and offers greater options than ever before.

A perfect solution for distributing DMX signals over standard Cat 5 computer networking cable, you can use your favourite lighting software (supports popular iPhone and iPad apps) to control lights remotely using Ethernet or Wi-Fi networks.

Ready to connect straight out of the box, the ODE Mk2 gives you true industry standard performance at a budget-conscious price.

DISCLAIMER: While all due care has been taken, this brochure is for general marketing purposes only and should not be relied upon as being complete or accurate.

**enttec.com**

MELBOURNE AUS / LONDON UK / HILLSBOROUGH NC, USA

## Open DMX Ethernet Mk2

More powerful than ever!

### ► Features

- Easy web-based configuration. Use your favorite browser, click a few buttons and you're done.
- Multiple protocols support: Art-Net 1/2/3, Streaming ACN sACN, and ESP. Use whichever you prefer, simply change the protocol using the web configuration.
- Factory set to use DHCP IP addressing. Simply connect to your existing router, and any supported software will find it.
- Flexible options: supports either LTP or HTP Merging (upto 2 sources). Either enable or disable merging, to suit your needs.

- Supports RDM Over Art-Net (controller). When enabled, all RDM fixtures connected to the ODE, can be configured using any RDM over Art-net software.
- Choose from Input mode (receives DMX, and sends over Ethernet), or Output mode (sends DMX). Input mode supports options for broadcast or unicast.

### ► Hardware

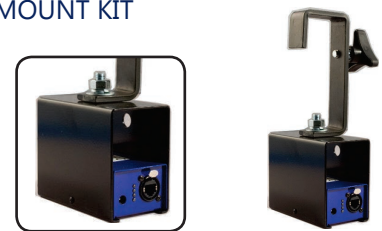
- Tabletop or truss mountable with optional truss bracket
- 1 DMX input connector
- 1 DMX output connector
- 1 RJ45 Ethernet connection
- External plug pack (regular model)
- Power over Ethernet support (POE model)



### ► Applications

- Output for Ethernet-enabled lighting consoles
- Output for PC-based lighting controllers
- Input for lighting visualisers
- Input and output to carry one of multiple universes of DMX data over Cat-5 wiring

### TRUSS MOUNT KIT



### Dimensions

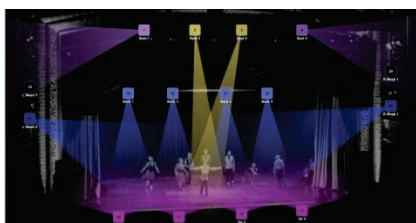
H40mm/1.58" W130mm/5.12" D60mm/2.36"

### ► Recommended Apps

#### • D-Pro



D-PRO 2U is a software-based lighting controller which plays well with a host of different professional level hardware devices from ENTTEC. It has plenty of advanced features for the most demanding lighting professional applications. Includes D-PRO Player, a touchscreen-friendly interface to easily control your cues. An OSC controller (such as TouchOSC) can also be used to remotely control D-Pro. Windows and Mac OSX compatible.



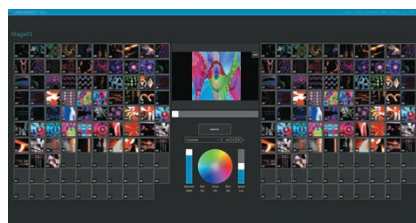
#### • ELM (ENTTEC LED MAPPER)



ELM provides total control over your LED system, regardless of shape and size.

Design your layout with vector-based objects for maximum precision and flexibility. Load the media of your choice and begin playback as needed.

Supports Spout and NDI. Supports RGB, RGBW, RGBA, RGBAW/RGBWA and White fixtures.



### PART NUMBERS

70405 - ODE Mk2

70406 - ODE Mk2 POE

70041 - Truss Mount Kit

79111 - Universal Power Supply

