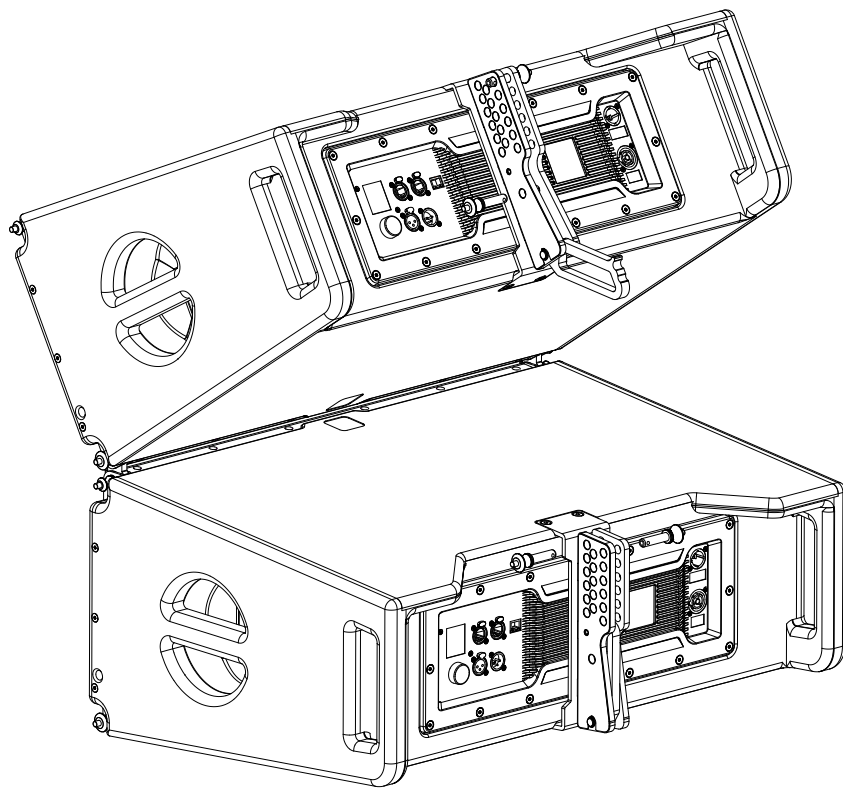


# **EA** EAW<sup>®</sup>

**EASTERN ACOUSTIC WORKS**



## ***NT Series Rigging Guide***

# IMPORTANT SAFETY INSTRUCTIONS – READ THIS FIRST

## Safety Instructions

Read and heed all warnings and safety instructions in this manual before using this product. Failure to follow these precautions may result in damage, injury, or death.

- 1) Read these instructions.
- 2) Keep these instructions.
- 3) Heed all warnings.
- 4) Follow all instructions.
- 5) Do not use this apparatus near water.
- 6) Clean only with a dry cloth.
- 7) Do not block any amplifier ventilation openings. Install in accordance with the manufacturer's instructions.
- 8) Do not install near any heat sources such as radiators, heat registers, stoves, or other apparatus that produce heat.
- 9) Do not defeat the safety purpose of the polarized or grounding-type plug. A polarized plug has two blades with one wider than the other. A grounding type plug has two blades and a third grounding prong. The wide blade or the third prong is provided for your safety. If the provided plug does not fit into your outlet, consult an electrician for replacement of the obsolete outlet.
- 10) Protect the power cord from being walked on or pinched particularly at plugs, convenience receptacles, and the point where they exit from the apparatus.
- 11) Only use attachments/accessories specified by the manufacturer.
- 12) Use only with a cart, stand, tripod, bracket, or table specified by the manufacturer, or sold with the apparatus. When a cart is used, use caution when moving the cart/apparatus combination to avoid injury from tip-over. In addition, use only with the Caster Pallets and flybars specified by the manufacturer, or sold with the apparatus. When a Caster Pallet is used, use caution when moving the apparatus combination to avoid injury from tip-over.
- 13) Unplug this apparatus during lightning storms or when unused for long periods of time.
- 14) The AC Mains connector (the appliance coupler) is used as the disconnect device.  
This connector shall remain readily accessible and operable.
- 15) Refer all servicing to qualified service personnel. Servicing is required when the apparatus has been damaged in any way, such as power-supply cord or plug is damaged, liquid has been spilled or objects have fallen into the apparatus, does not operate normally, or has been dropped.



## Suspension Warnings

**WARNING:** Suspending anything, especially overhead of people, should be done with extreme caution. Always engage the services of a certified professional who is qualified to determine the requirements for and to implement overhead rigging. Only persons with the knowledge of proper hardware and safe rigging techniques should attempt to suspend loudspeakers overhead. Failure to follow these precautions may result in damage, injury, or death.

### Avertissements de suspension

**AVERTISSEMENT:** Suspendre quoi que ce soit, en particulier les frais généraux de personnes, doit être fait avec une extrême prudence. Toujours engager les services d'un professionnel certifié qui est qualifié pour déterminer les conditions requises et à mettre en œuvre le gréement en tête. Seules les personnes ayant la connaissance du matériel approprié et les techniques sécuritaires de gréage devraient tenter de suspendre les haut-parleurs au-dessus. Le non-respect de ces précautions peut entraîner des dommages, des blessures ou la mort.

### Avvertenze sospensione

**AVVERTENZA:** Sospendere nulla, soprattutto sovraccarico di persone, deve essere fatto con estrema cautela. Inserire sempre i servizi di un professionista certificato che si è qualificato per determinare i requisiti di e ad attuare manovre in testa. Solo le persone con la conoscenza di tecniche di assemblaggio di

sicurezza hardware e dovrebbero tentare di sospendere gli altoparlanti in testa. La mancata osservanza di queste precauzioni può provocare danni, lesioni o morte.

#### Advertencias de suspensión

**ADVERTENCIA:** La suspensión de cualquier cosa, especialmente por encima de las personas, se debe hacer con mucho cuidado. Siempre contratar los servicios de un profesional certificado que está calificado para determinar los requisitos para implementar y para las maniobras de elevación. Sólo las personas con el conocimiento de las técnicas de aparejo de seguridad de hardware adecuada y deben intentar suspender altavoces por encima.

El incumplimiento de estas precauciones puede resultar en daños, lesiones o muerte.

#### Suspension Warnungen

**WARNUNG:** Schwebend alles, vor allem Aufwand von Menschen, sollte mit äußerster Vorsicht erfolgen. Immer engagieren, die Dienste eines zertifizierten Profi, der qualifiziert ist, die Anforderungen zu bestimmen und Überkopfmontage zu implementieren. Nur Personen mit der Kenntnis der richtigen Hardware und sichere Rigging Techniken sollten Lautsprecher Kopf aussetzen versuchen. Die Nichtbeachtung dieser Vorsichtsmaßnahmen kann zu Schäden, Verletzungen oder zum Tod führen.

Table of Contents

IMPORTANT SAFETY INSTRUCTIONS – READ THIS FIRST ..... 1

Suspension Warnings ..... 1

Table of Contents..... 3

    NTX210L Walkaround.....4

    SBX218 Walkaround.....4

    SBX118 Walkaround.....5

    Rigging Assemblies / Rigging Pins.....6

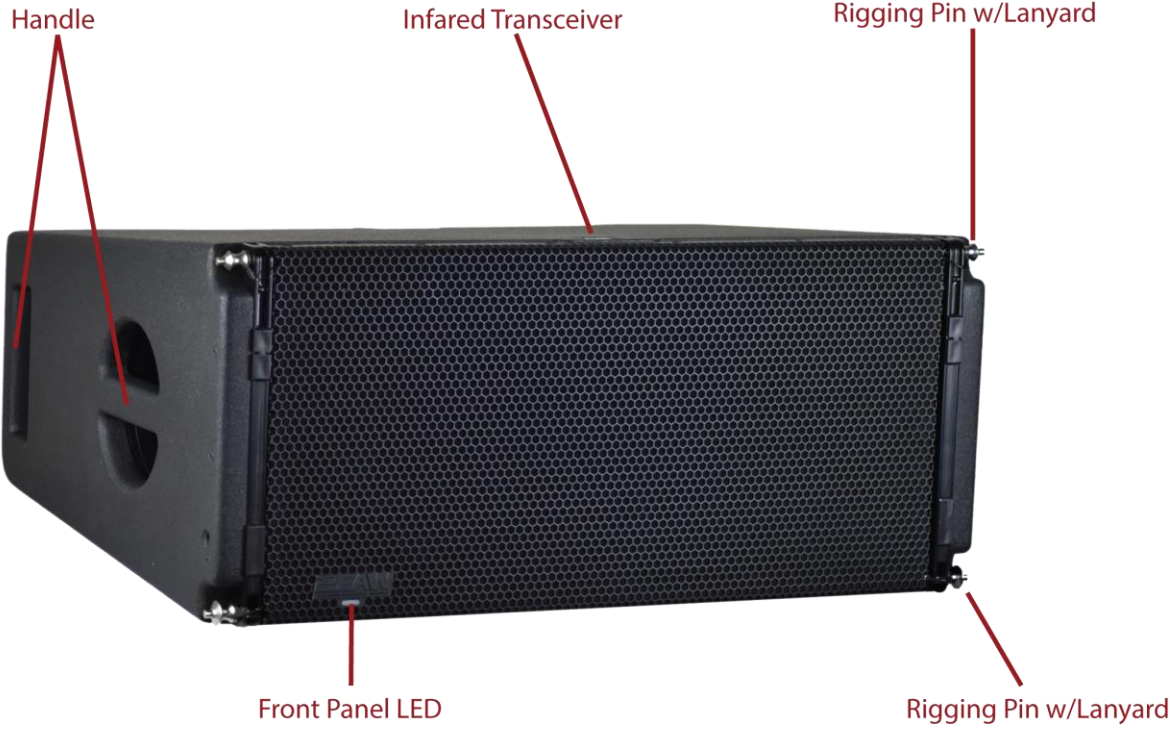
    Handles .....6

    Using EAW Resolution 2.....7

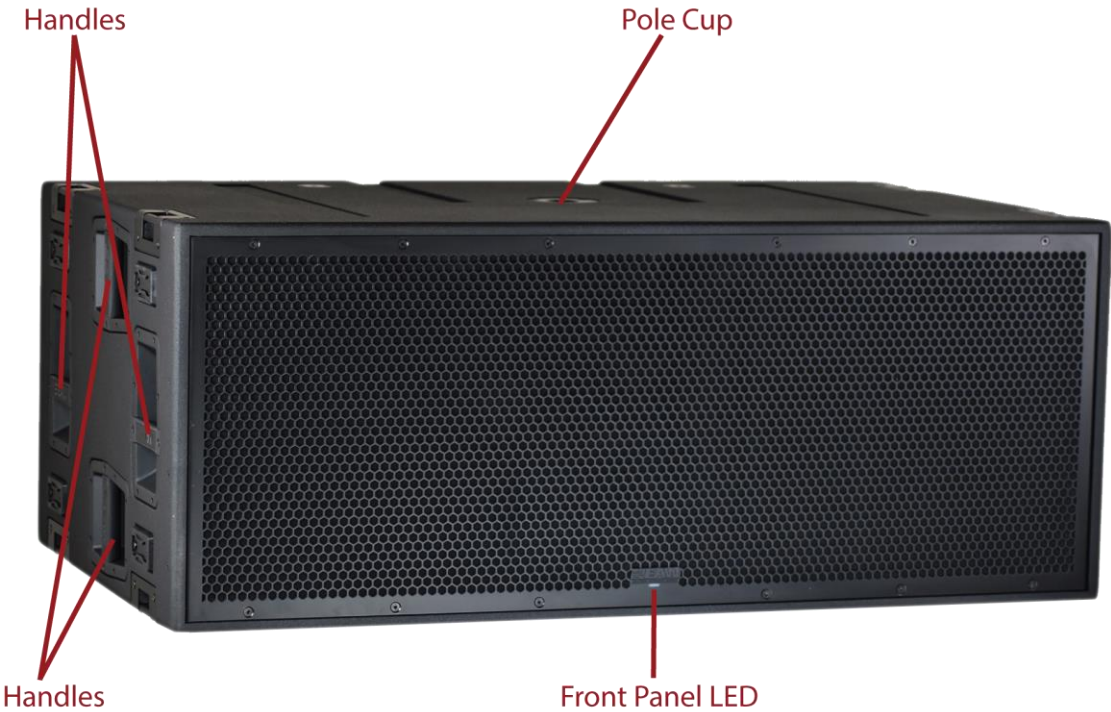
    Rigging Instructions .....8

    Service, Inspection & Maintenance..... 14

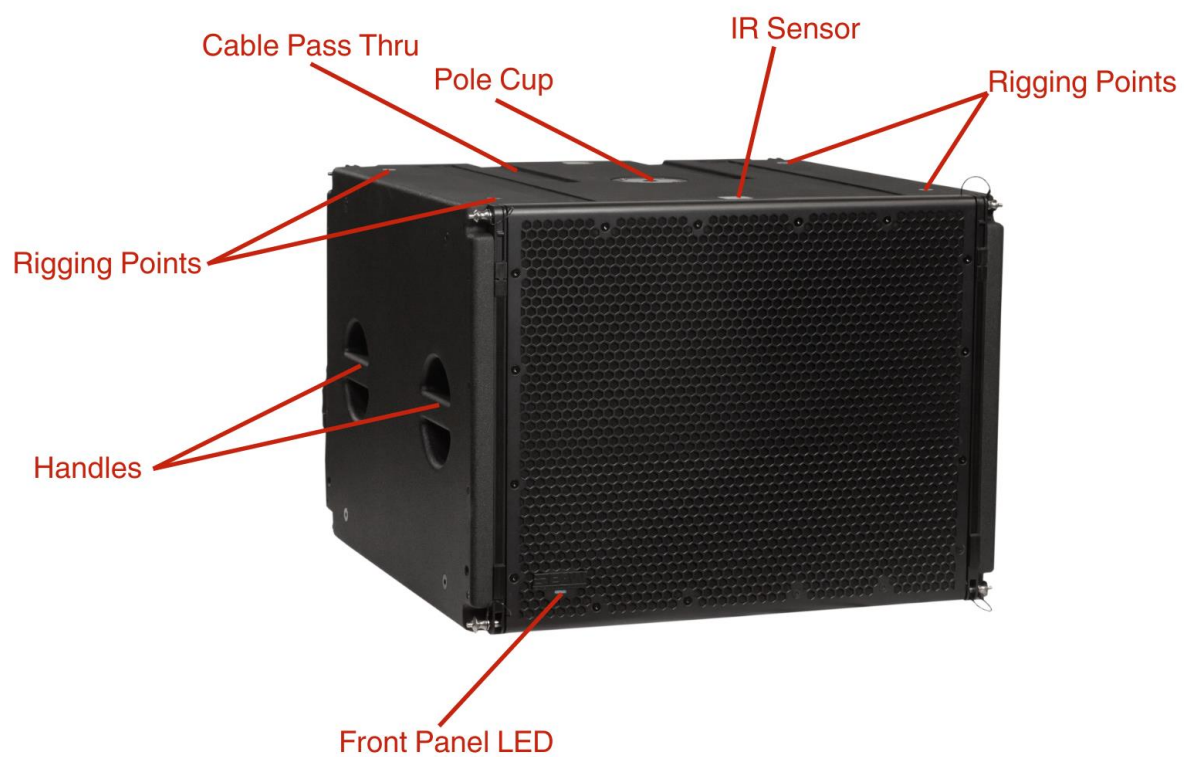
NTX210L Walkaround



SBX218 Walkaround



## SBX118 Walkaround



## Rigging Assemblies / Rigging Pins

Every NT Series model comes with Rigging Assemblies with connected Rigging Pins on each side.



The NT Rigging Pins come equipped with lanyards. Additionally, flyable NT models ship with two extra Rigging Pins and lanyards to be used as replacements/spares.

Always use EAW Resolution to verify the structural integrity of the array you intend to suspend. The ONLY exception to this is with the pre-defined, pre-approved array configurations provided later in this manual.



NT Line Array modules have no mounting points but can be flown using the attached rigging hardware and compatible flybar assemblies.

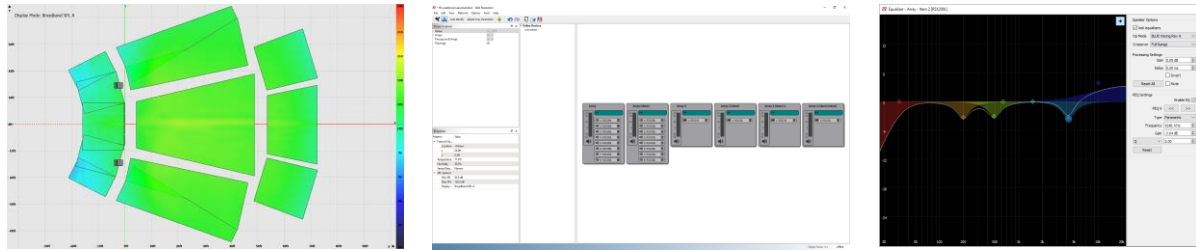
## Handles

The built-in handles on all NTX cabinets indicate that they should always be lifted, carried and moved by at least two people.



NEVER attempt to suspend ANY unit by the handles. Failure to follow these precautions may result in damage to the equipment, personal injury, or death.

## Using EAW Resolution 2



### What is Resolution 2?

EAW Resolution™ 2 is a tool to assist sound system designers and engineers to select, configure, and implement EAW loudspeaker products. Resolution™ 2 predicts *direct* sound pressure level (SPL) in a 'virtual' venue. Signal processing can be applied in software, and the resulting frequency response calculated for 'virtual microphones' throughout the model.

Additionally, Resolution™ 2 performs mechanical calculations for a given array or loudspeaker configuration to assist the user in correctly rigging their sound system.

### Why use Resolution 2?

It helps predetermine any issues that may arise, including safety, weight, angle, flybar and more.

Resolution determines coverage, allowing the user to place microphones on the surfaces and the options to choose specific passbands.

Resolution's venue view (prediction) and network view (control) work hand in hand. NTX Series line items coupling and HF shading may be determined by the venue model and array configuration.

It also is a great tool for pre-sales. Customers will be able to see the final setup prior to any purchase. Therefore, realistic expectations have been set for all interested parties which results in a better relationship between the buyer and seller.

Resolution 2 is free, and all future improvements and updates are free of charge as well.

### System Requirements

EAW Resolution 2 requires an IBM®-compatible PC with Windows 10® operating systems, including a standard Ethernet port to connect the computer to the network and control Radius loudspeaker modules. Though processor speed and memory size primarily impact only calculation time, the following specifications are recommended for useful operation:

<https://eaw.com/software/resolution-software/> - Download Resolution 2 Software

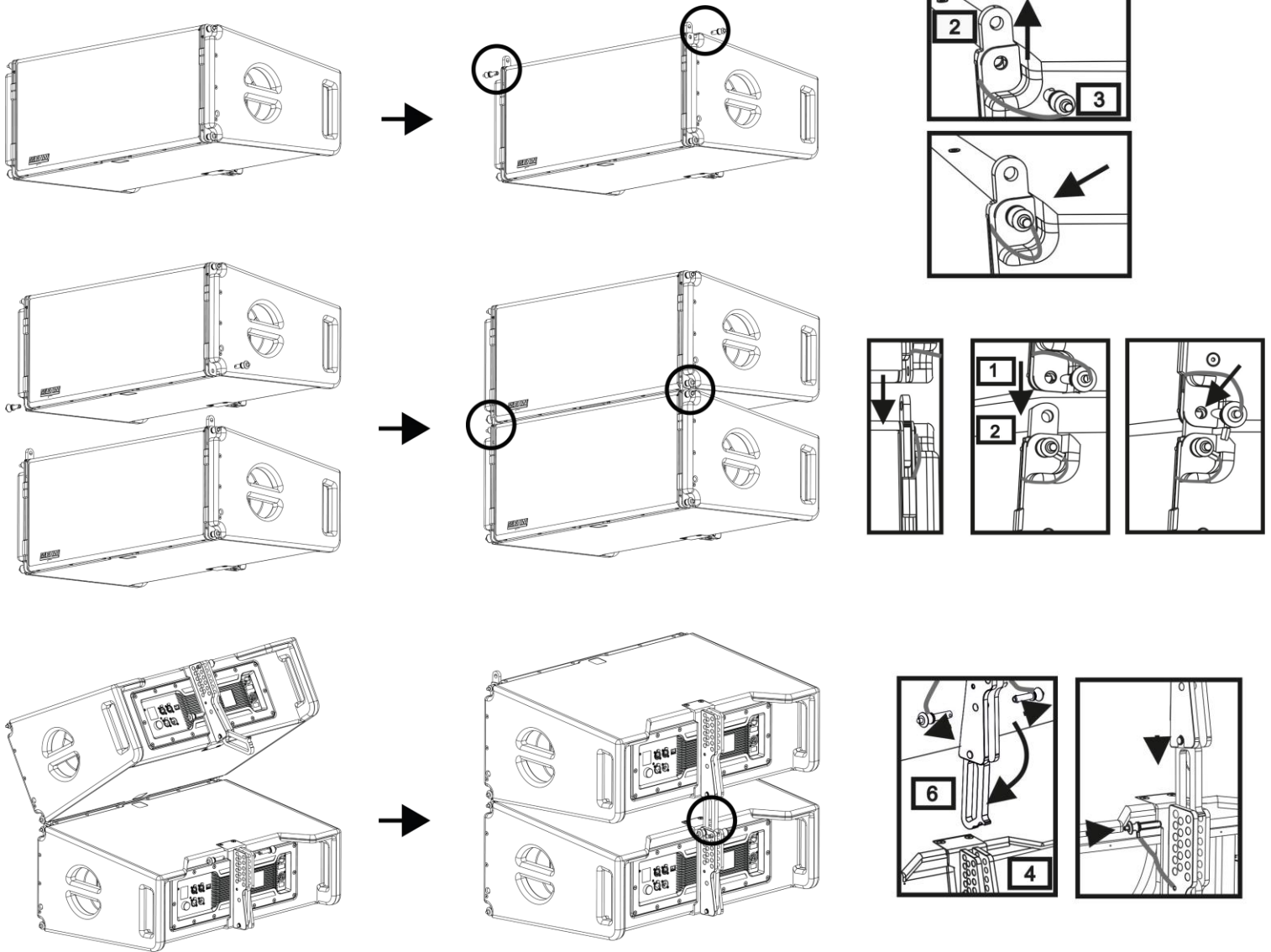
	MINIMUM REQUIREMENTS	RECOMMENDED SPECIFICATIONS
<b>Processor</b>	2.2 GHz Dual Core Processor	2.8 GHz Quad Core Processor
<b>Memory</b>	2 GB RAM	8 GB RAM
<b>Screen Resolution</b>	1024 x 768 display resolution	1920 x 1080 display resolution
<b>Operating System</b>	Windows 10	
<b>Storage</b>	1 GB available HD space	



## Rigging Instructions

The assembly of two NTX modules can be done following the steps below:

- On the first module, remove the pins [3], raise the retractable brackets [2] and fasten them to the new position using the pins [3].
- Remove the pins [1] from the second module, place it on top of the first module, inserting the brackets [2] as shown. Then fasten the front side of the two modules using the pins [1] of the second module.
- On the back, remove the pins [5] from the rear brackets [4]. Then insert the movable arm [6] of the second module into the bracket [4] of the first module. The next page shows in detail the fastening of the angle on the rear between the two modules.



The below example explains two cases in which you want to set a specified angle between two modules using the rear rigging. Before carrying out any other operation, make sure that once the movable arm is inserted [6], the hole of the chosen angle is contained inside the loop as shown.

- **FLOWN CASE:** insert only one pin in the hole on the chosen angle. The second pin can be housed in the “PIN HOLDER” hole. Note that this type of configuration during the assembly allows changing the chosen angle simply by moving the respective pin (with the movable arm inserted).
- **STACKED CASE:** once the pin [5] is inserted into the hole of the chosen angle, lift module B as far as the movable arm [6] allows. At this point, insert the second pin into the “ANGLE LOCK” position and release module B. This way, module B is completely blocked by the two pins on the rear.

After assembly is completed, always make sure that all the pins have been completely inserted and are locked.

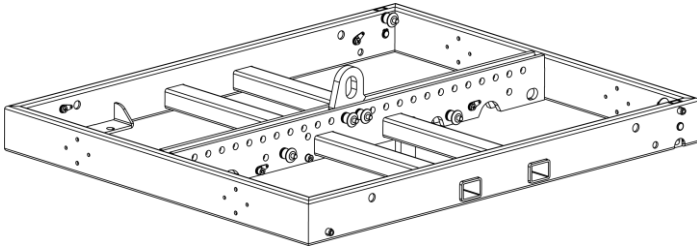


*Rear Rigging Assembly Plates*

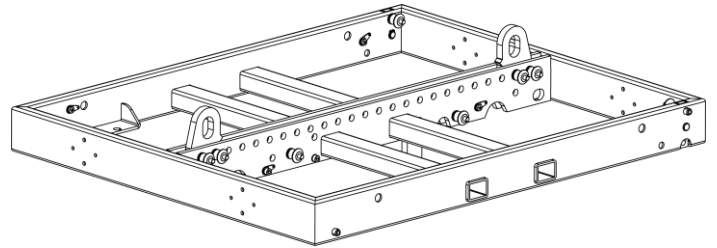
For quick installation, the following optional accessories can be purchased:

- Fly-bar for the flown and stacked use for line arrays of NTX210L modules.
- A cart to transport up to 4 NTX210L modules.

#### *NTX210L Flybar*



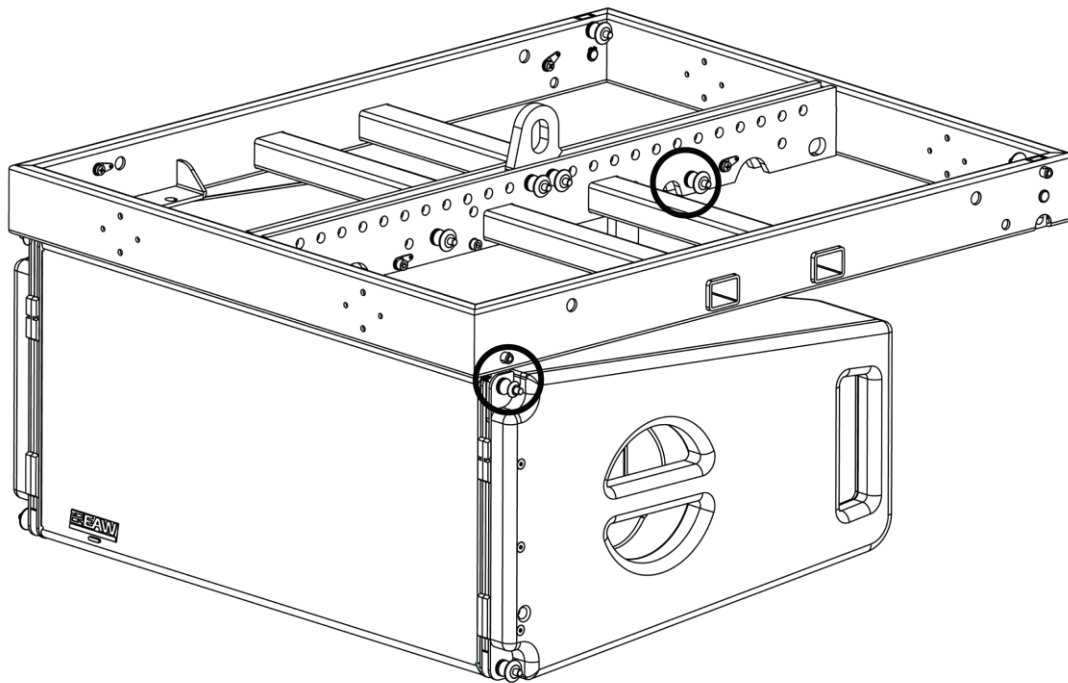
*NTX Flybar using one shackle/pick point*



*NTX Flybar using two shackles/pick points*

The assembly of an NTX210L module to an NTX Flybar can be done following the steps below:

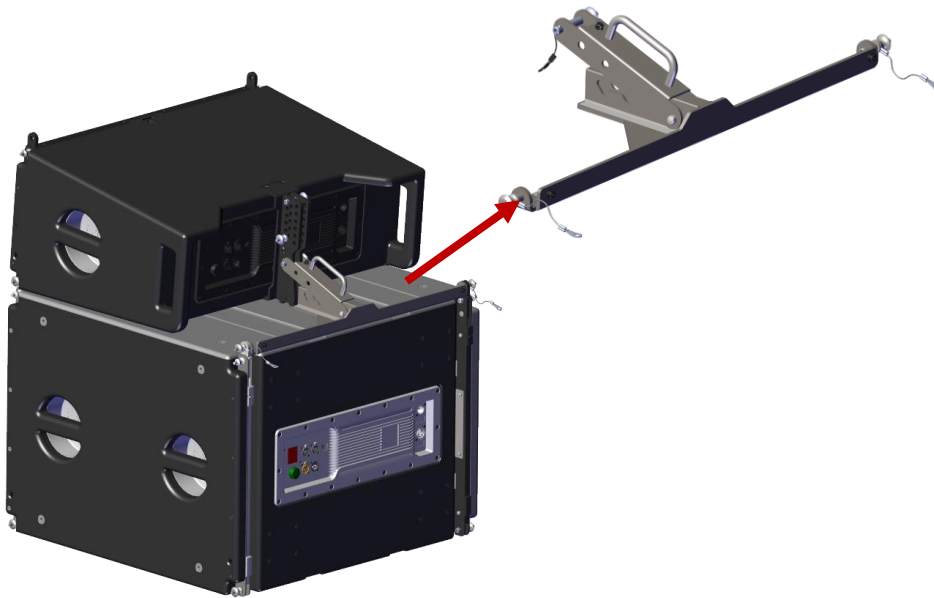
- Connect to single or dual shackles and raise shackle enough to fit NTX module underneath comfortably.
- Raise rigging ears on NTX and align to flybar holes.
- Insert front rigging pins on both sides.
- Align and lock into place rigging plates on flybar to rear rigging assembly on NTX module.



### *NT Series Ground Stack Adapter*

Ground stacking of an NTX210L cabinet with an SBX118F subwoofer is possible using the groundstack adapter by following the steps below:

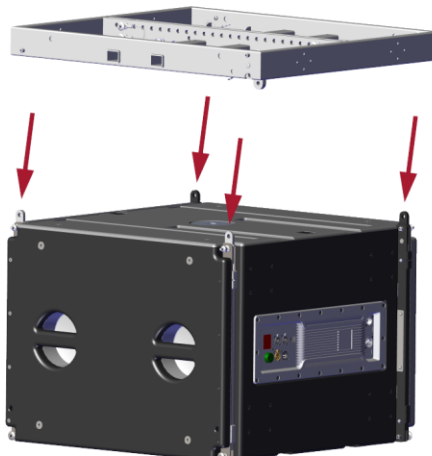
- Place SBX118F subwoofer right side up on stable surface.
- Line up groundstack adapter with the rear rigging positions of the SBX118F and pin in place using pins from the groundstack adapter.
- Line up NTX210L with the front rigging positions of SBX118F and pin it into place using rigging pins from the NTX cabinet.
- Using the three-point rigging, set splay angle and pin on the groundstack adapter.
- Pin NTX210L using pin on the groundstack adapter to secure cabinet to rigging.



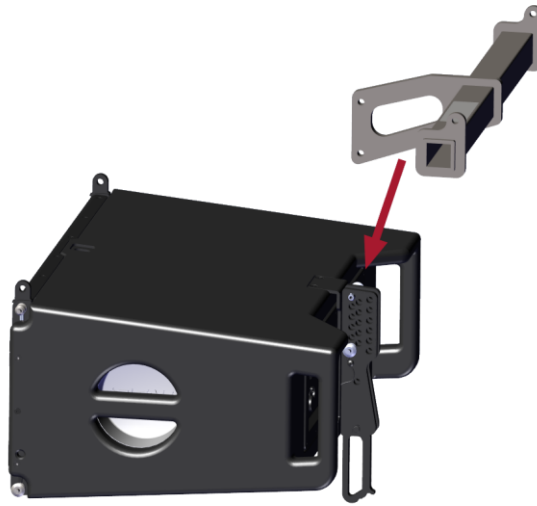
### *NT Series Array Transition Bar*

To array an SBX118F subwoofer with NTX210L line array loudspeakers, the NT Series transition bar is needed. Follow the steps outlined below to build the array.

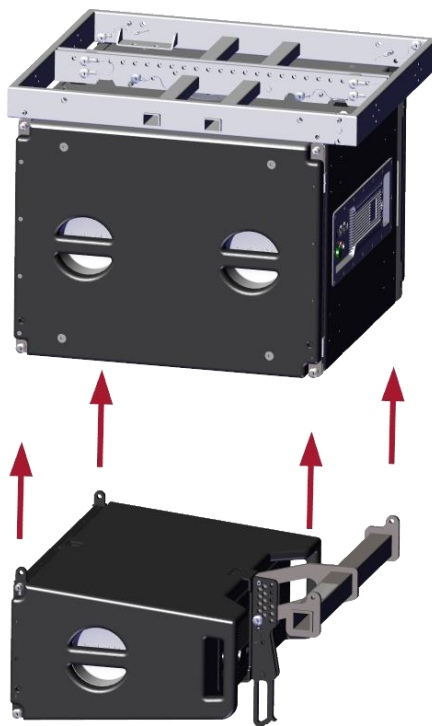
- Connect the NT Series flybar to the first SBX118F in the array using the 4 rigging points.



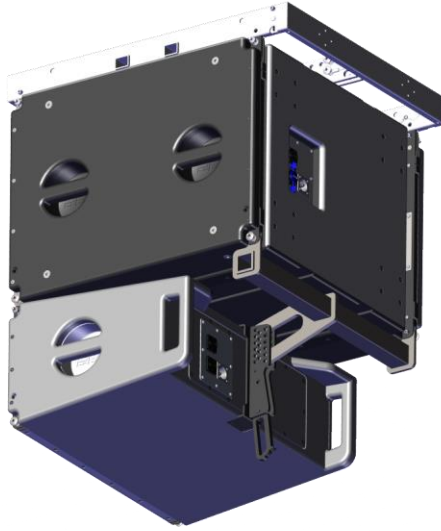
- Connect any additional SBX118F using the same four rigging points as used previously by the flybar.
- To rig NTX210L to array, start by pinning transition bar to the first NTX210L and set splay angle using angle and locking pin.



- Connect NTX210L to front points on the bottom of SBX118F, and the two transition bar rigging points to rear points.



- Below is an image with a configuration utilizing both the SBX118F flown by the flybar, as well as an NTX210L with the transition bar. Additional NTX line array cabinets may be added by following the steps outlined at the top of Section 10 on page 22.

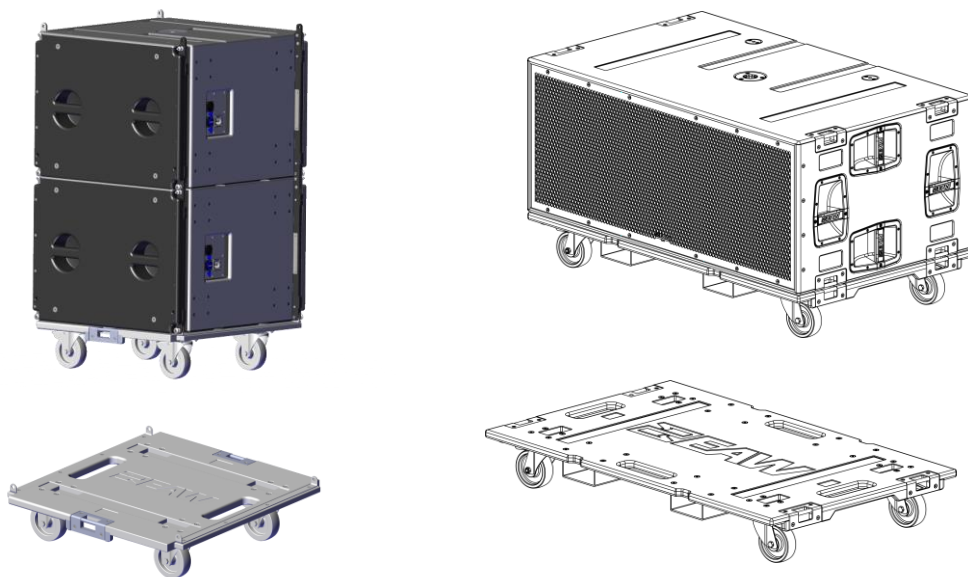


*Carts, casters and caster pallets available for NT Series Products*

- The NTX Cart can transport up to 4x NTX line array items.



- SBX218 & SBX118F castor pallets may transport up to 2 subwoofers. Castor kits are available and may be utilized directly on SBX subwoofers.



## Service, Inspection & Maintenance

### General Service

All components in the NT Series systems are designed to withstand the most rigorous and demanding environments. Through regular operation it may still be necessary to replace acoustical, electronic and mechanical components.

### Contacting EAW

We have attempted to make this manual and the as thorough as possible. However, feel free to contact us with any further questions or comments for topics not covered.

### Operating Questions

EAW Support

**Tel** 508-266-6334

**Tel** 800-992-5013 (USA only)

**E-mail** support@eaw.com

### Service Information

EAW Service Department

19 National Drive

Franklin, MA 02038 USA

**Tel** 508-234-6158

**Tel** 800-992-5013 (USA only)

**E-mail** parts@eaw.com



**Eastern Acoustic Works**

19 National Drive | Franklin, MA 02038 | USA

tel 800 992 5013 / +1 508 234 6158

[www.eaw.com](http://www.eaw.com)

©2024 Eastern Acoustic Works

All rights reserved. Products are not drawn to scale.

All terms, conditions, and specifications subject to change without notice.