

DENON DJ  
**PRIME GO +**

**Created for  
DJs on the  
Move**

The PRIME GO+ continues the journey of the agile battery-powered PRIME GO while adding access to a massive amount of Wi-Fi music streaming options.







PRIME GO+

# Small in Size, Not in Features

## Capable Connectivity

PRIME GO+ has all of the connectivity options that any professional DJ could want including professional physical inputs and outputs as well as Bluetooth in and out for 100% wireless performance.

## Play Anything, Anywhere

Enjoy vast musical access without being tethered to a computer or power source. The PRIME GO+ boasts onboard Wi-Fi for streaming from top services like Amazon Music Unlimited, Beatport, Beatsource, TIDAL, SoundCloud GO+ and Dropbox as well as a USB input and SD Card slot for saved music libraries and playlists.

## Frequent Feature-Packed Updates

The PRIME GO+ runs on Engine DJ, an ever-evolving DJ operating system with a proven track record of making key features available to DJs first. With easy, Over-The-Air updates using Wi-Fi, you are automatically notified on your device when an update is available, continually keeping you on the cutting edge of DJ performance technology.

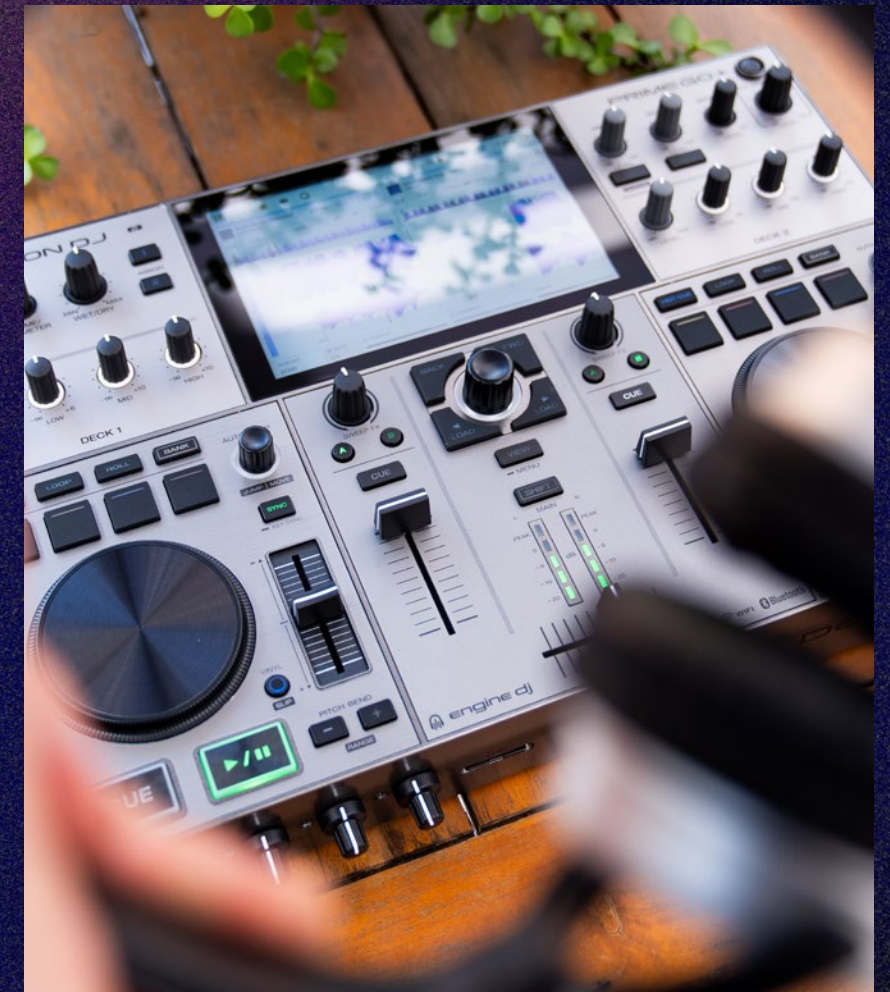
## Powerful Portability

With its compact size and rechargeable battery, the PRIME GO+ is the ultimate grab-and-go DJ device for any gig or destination mix session.



## Portable FX Powerhouse

With 26 Main FX, 2 knob-controlled Sweep FX, Echo Fader FX, and 10 interactive Touch FX, the PRIME GO+ features a plethora of FX options to level up the creativity of your mixes and performances.





RECHARGEABLE  
LITHIUM-ION  
BATTERY

7" TOUCHSCREEN  
WITH GESTURE SUPPORT

BUILT-IN WI-FI

ASSIGNABLE  
FX CONTROL

SWEEP FX  
CONTROL

PERFORMANCE  
PADS

HEADPHONE  
JACKS

CUE AND AUX  
CONTROLS

SD MEDIA  
INPUT

TOUCH-  
CAPACITIVE  
JOG WHEELS

ULTRA  
PORTABLE

SEAMLESS  
LOOPING

HIGH-RES  
PITCH FADER





PRIME GO+

# Full Feature List

- ▶ Built-in Wi-Fi and integration with Amazon Music Unlimited, Beatport, Beatsource, SoundCloud GO+, and TIDAL for easy access to over 100-million songs across all genres
- ▶ Long-lasting internal rechargeable battery for DJing on the go (25% performance improvement over the original PRIME GO)
- ▶ Bluetooth input and output for wireless audio connectivity
- ▶ Engine DJ standalone operating system for laptop-free performances and cutting-edge features like embedded Sampler, onboard song analysis, Touch FX, wireless updates, and more
- ▶ SD card slot and USB input for saved media
- ▶ Professional inputs and outputs (balanced XLR main out, RCA out, ¼" booth out, RCA aux input, 2 balanced Mic combo jack inputs)
- ▶ 7" multi-gesture high-definition touch screen with customizable views and Day Mode option
- ▶ Engine Lighting embedded lighting control for Philips Hue, Nanoleaf, and DMX lighting
- ▶ Internal FX engine with assignable Main FX, Sweep FX, Touch FX, and Fader Echo FX
- ▶ 4 dual-layer performance pads on each deck with Hot Cue, Loop, Saved Loop, Roll, and Sampler modes
- ▶ Loop/Beat Jump encoder knob on each deck
- ▶ 3-band EQ on each channel
- ▶ Touch-capacitive jog wheels
- ▶ High-resolution pitch slider with center detent
- ▶ Computer mode and USB connection for use as a software controller





PRIME GO +

# Technical Specifications

AUDIO	
Frequency Response	20 Hz - 20 kHz (+/- 1 dB)
Dynamic Range	> 109 dB (A-weighted)
Signal-to-Noise Ratio	> 92 dB (A-weighted)
Channel Separation	< -88 dB (1 kHz, unity)
Headroom	
Aux	> 15 dB
Mic Input	> 20 dB
Outputs	> 15 dB
T.H.D.	
Aux	< 0.01% (1 kHz, unity)
Microphone	< 0.02% (1 kHz, unity)
Analog Input	
Aux	+15 dBV (maximum), 0 dBV (unity)
Microphone	-40 dBV (unity), -54 dBV (minimum)
Analog Output	
Master, Balanced	+18 dBu (maximum), +4 dBu (unity)
Master, Unbalanced:	+15 dBu (maximum), 0 dBu (unity)
Booth	+18 dBu (maximum), +4 dBu (unity)
Headphone Output	< 40 mW
CONNECTIONS	
(2) XLR outputs (master left/right, balanced)	
(1) RCA output pair (master left/right, unbalanced)	
(2) 1/4" (6.35mm) outputs (booth left/right, balanced)	
(1) 1/4" (6.35mm) stereo output (headphones)	
(1) 1/8" (3.5mm) stereo output (headphones)	
(1) RCA input pair (line-level, unbalanced)	
(2) XLR + 1/4" (6.35mm) inputs	
(1) USB ports (for USB drives)	
(1) USB port (to computer)	
(1) SD card slot	
(1) Power adapter input	
POWER	
Connection	DC, Center Positive
Voltage	19V 3.42A
Consumption	30W maximum
Built-In Rechargeable Battery	

DENON DJ  
PRIME GO +

