

# 10FCX64

## Coaxials FE - 10.0 Inches

500 W continuous program power capacity  
 70° nominal coverage  
 65 - 18000 Hz response  
 95 dB sensitivity



### Specifications

Nominal diameter	250 mm (10.0 in)
Nominal impedance	8 Ω
Minimum impedance lf	6.4 Ω
Minimum impedance hf	7.0 Ω
Frequency range	65 - 18000 Hz
Dispersion angle	70 °
Diaphragm material	Titanium
Recommended crossover	1.2 kHz
Magnet material	Ceramic

### Specifications Lf Unit

Lf sensitivity	95.0 dB
Lf nominal power handling	250 W
Lf continuous power handling	500 W
Lf voice coil diameter	64 mm (2.5 in)
Lf winding material	Copper

### Specifications Hf Unit

Hf sensitivity	104.0 dB
----------------	----------

### Specifications Hf Unit

Hf nominal power handling	80 W
Hf continuous power handling	160 W
Hf voice coil diameter	65 mm (2.5 in)
Hf winding material	Aluminium

### Parameters

Fs	63 Hz
Re	6 Ω
Qes	0.44
Qms	7.9
Qts	0.42
Vas	25.0 dm <sup>3</sup> (0.89 ft <sup>3</sup> )
Sd	320.0 cm <sup>2</sup> (49.1 in <sup>2</sup> )
η <sub>p</sub>	1.4 %
Xmas	5.5 mm
Xvar	6.0 mm
Mms	37 g
Bl	13.4 Txm
Le	1.2 mH

### Parameters

Ebp	143 Hz
-----	--------

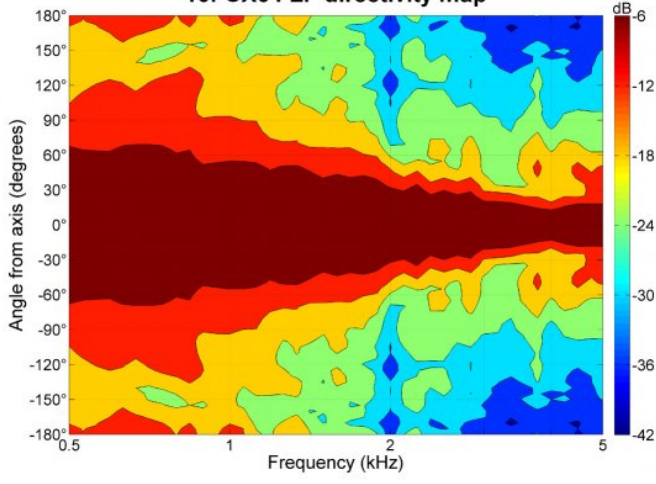
### Mounting And Shipping Info

Overall diameter	261 mm (10.3 in)
Bolt circle diameter	245 mm (9.6 in)
Baffle cutout diameter	230 mm (8.8 in)
Depth	145 mm (5.7 in)
Flange and gasket thickness	13 mm (0.5 in)
Net weight	5.65 kg (12.8 lb)
Shipping units	1
Shipping weight	6.45 kg (14.2 lb)
Shipping box	365x365x210 mm (14.4x14.4x8.3 in)

### Other

Service kit lf	RCK10FCX648
Service kit hf	MMD620TN8M

10FCX64 LF directivity map



10FCX64 HF directivity map

