



 **XONE:series**  
PROFESSIONAL DJ PRODUCTS



t: +44 (0) 1326372070 :: [www.xone.co.uk](http://www.xone.co.uk) :: [www.allen-heath.com](http://www.allen-heath.com)

**ALLEN & HEATH**

AN761  
ISSUE 2

**ALLEN & HEATH**



Here at Allen & Heath, we've been designing and engineering innovative, high performance live sound and studio mixers for 40 years. When we started to apply these skills to DJ mixers in 1999, we never dreamed that the products would take off so successfully and so quickly. Ten years on, Xone Series mixers are recognised as the industry standard for innovation and excellence in sound and design, with many models at the cutting edge of new technology.

From the entry level Xone:22 to the club standard Xone:92 and ingenious Xone:4D mixer-MIDI controller, every Allen & Heath DJ mixer is designed with the attention to detail that produces great-sounding, robust and reliable instruments that give years of service.

We're proud to say that there's a Xone mixer to suit every DJ and every style – from professional club DJs, working mobile DJs, to guys simply using DJ gear to create the party vibe with friends. Of course we have fully recognised the needs of DJ's who have moved on to using digital DJing techniques, but haven't lost sight of the needs of DJ's who want to stay with traditional analogue mixing.

Welcome to our new catalogue, which showcases our newly styled Xone mixers - we hope you like it.

Xone – used by the best DJ's and clubs in the world.

# INDEX

Contents	Page
Xone:S2 DJ/installation mixer	4-5
Xone:464 DJ/club mixer	6-7
Xone:92 MIDI-enabled DJ/club mixer	8-9
Xone:62 DJ/club mixer	10-11
Xone:42 USB DJ mixer	12-13
Xone:32 DJ mixer	14-15
Xone:22 DJ mixer	16-17
Xone:02 scratch mixer	18-19
Xone:4D mixer/controller	20-21
Xone:DX Professional MIDI controller	22-23
Xone:2D soundcard/controller	24-25
Xone:1D MIDI controller	26-27
Xone:XD Headphones	28-29
Xone:Patchbay	30-31
Xone:Partners	32-33
Technical Specifications	34-35

# Xone:S2

Xone:S2 is the ultimate installation DJ mixer for clubs, bars and professional mobile rigs. It boasts Xone's renowned high spec performance features, including 3-band EQ with total kill, a VCA crossfader with adjustable curve control, and the legendary Xone filter system, which can be assigned to any of the four main channels, plus there's a choice of either rotary or linear channel faders.

Uniquely, there is a USB audio interface, which can be used for playback and recording to or from a PC/MAC, or used to create an FX loop. Special design elements, such as the output limiter system, alarm input, and additional stereo input (RCA) on the front panel for guest DJ's, make it the ideal mixer for club installers and owners, and the perfect complement to any PA system.



## Features:

- 4 stereo dual input channels with 3-band total kill EQ
- Analogue filter section with filter type, frequency, and resonance controls
- 2 mono mic/stereo XLR line channels with 2-band EQ and insert points
- Mic auto ducking control, with adjustable depth and release
- Assignable crossfader with scratch/mix curve control
- External line input with level and cue
- 5 outputs: main mix, monitor/booth, remote zone, mono/sub, and record
- Lighting controller audio feed
- Remote level control for zone output (0-10V)
- USB audio interface for computer-based file replay, recording software or FX loop
- CD fader starts on each music channel
- Soft switched global FX loop
- Recessed level trims on back for music channels
- Adjustable output level limiter
- Sub output with adjustable roll off frequency
- Alarm input override and dedicated alarm message audio input



Rotary Option Available



# XONE:464

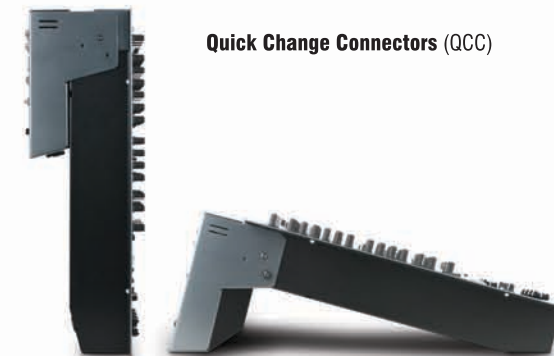
Here's where it all started. As the first model in the range, the Xone:464 paved the way with superior sound and build quality never seen before in a DJ mixer. A dedicated club mixer, designed to please both club technicians and the performing DJ, its combination of versatility and fine craftsmanship mean it is still the first choice for venues where DJ's and engineers are serious about their music.

It shares the same solid construction as Allen & Heath's pro touring desks, so venues can depend on it for outstanding audio and reliability, whilst the renowned Xone analogue filters and 4-band asymmetric EQ make it an incredibly creative tool for DJ's to enjoy. The 4 fully-featured mic/line inputs mean live performers can join the mix, adding a new dimension to the stunning feature set.



## Features:

- 4 fully-featured mono/mic performance channels with 100mm faders
- 6 dual stereo channels with RCA and TRS sources on each channel
- 2 independent outputs on XLR or TRS, with full metering
- 6 aux sends from every channel for monitors or FX sends
- 4 stereo, 2 mono zone outputs with rotary control
- VCF system - 2 independent stereo filters with frequency and resonance control
- 4-band EQ with +6dB and -26dB cut
- 2 headphone outputs, split cue, mono sum button, booth output
- P&G easy change professional VCA crossfader
- Comprehensive booth monitor system
- Sys-Link option to connect to other A&H mixers
- Desk or 19" rack mount



Quick Change Connectors (QCC)

# XONE:92

The industry-standard XONE:92 defines the sound of superclubs, with features to suit all DJ styles from breakbeat to techno, trance to house. From the MIDI output capability, which allows control of any DJ production software or devices such as the Korg Kaoss Pad, to the innovative way the two independent VCF filters can be used together, this mixer is a DJ's dream tool. For those who prefer to twist, the XONE:92R is also available, with rotary instead of linear VCA faders.



## Features:

- 6 dual stereo channels - 4 phono/line, 2 mono/mic or stereo return
- 2 independent stereo mix outputs
- 2 aux sends for output to external FX units
- VCF system - 2 independent stereo filters with frequency and resonance controls
- 2 independent LFO's for filter manipulation
- 4-band EQ - total kill on HF and LF, wide Q for cut, narrow Q for boost
- Booth output - dedicated output on TRS jack
- MIDI values can be output from 6 controls (e.g. crossfader, LFO)
- P&G easy change professional VCA crossfader
- Illuminated lightpipes showing status of performance controls
- Intelligent cue for pre or post EQ monitoring
- Monitor section includes post EQ switch, split cue and mix to cue balance
- 2 headphone outputs (1/4" and 3.5mm)
- Ducking control on mono/mic channel



# XONE:62

The Xone:62 revolutionised club sound systems when it was launched, and quickly established itself as the mixer of choice for many of the world's greatest DJ's and clubs. The universal favourite is renowned for its superb audio quality, phenomenal VCF filters and creative 4-band EQ.

If you're a club owner, and you want to know how good your big-money speaker system could sound, or a DJ who simply wants to be taken seriously, try a XONE:62.



## Features:

- 6 dual stereo inputs, 2 with mic inputs
- Stereo aux send with pre/post switching
- VCF system - 2 independent stereo filters with frequency and resonance controls
- 4-band EQ with +6dB and -26dB cut
- P&G easy change professional VCA crossfader
- Monitor section - independent per-channel cue selection, split cue and aux
- Mix outputs on balanced XLR
- Independent booth output
- Stereo recording output
- Desk, custom rack or 19" rack mount
- High performance internal switch-mode power supply



# XONE:42

This progressive 4-channel DJ mixer is designed for DJ's of all abilities and experience from top pro DJ's to bedroom enthusiasts who want a compact quality mixer with pro features to mix any source - whether vinyl, CD or MP3.

The USB port allows easy connection to a computer and the integration of digital media, which can be used to play back music files from a laptop, record mixes, or used with music software.

The revolutionary 'X-FX' control allows easy signal routing to external FX in combination with the Xone VCF filter system. Brimming with features, this compact mixer is a favourite in many DJ studios, bars and clubs.



## Features:

- 4 dual stereo channels (2 phono/line, 2 line/line)
- 3 band EQ +6dB to total kill
- Rotary X-FX control for routing to external FX
- VCF filter with resonance & frequency controls
- VCA Crossfader with curve control
- Mix outputs on balanced XLR
- 9 segment channel meters
- Illuminated lightpipes showing status of performance controls
- USB port with one stereo up to PC and one stereo back
- Independent booth output
- XLR microphone input with 2-band EQ and level control
- 2 headphone outputs (1/4" and 3.5mm)
- Rack ears available



# Xone:32

Designed for the budget conscious DJ, this 3-channel mixer has a feature set that is second-to-none at this level. The famous Xone VCF is included, with high-pass, band-pass and low-pass filter switching, resonance control and tap programmable low frequency oscillator, while all filter settings can be saved to any of four digital recall setting (DRS) memories giving unprecedented control over the music.

Combined with the renowned Xone sound quality, the Xone:32 is a class act, and is also one of the few small format mixers around which is good enough for installation in the professional club circuit.



## Features:

- 3 dual stereo channels with switchable line and RIAA phono inputs
- Aux send from every channel for monitors or FX sends
- VCF system with frequency and resonance controls
- LFO filter frequency control with tap tempo control
- DRS™ Digital Recall System with 4 user programmable presets for filter FX
- 3-band EQ with +6dB boost and -26dB cut
- VCA crossfader with contour control, reverse and bypass switches
- Intelligent Transmute Control on either side of crossfader
- Separate main mix, record, booth and headphones monitor outputs
- Mic input on XLR connector
- Advanced cue system with interlock and cue/mix fader for performance preview





# XONE:22

Nicknamed 'My first Xone', the Xone:22 effortlessly raises the bar on entry-level mixer design, offering top quality audio and a professional feature set usually only found in the booth of a top-rated club, all at a stunningly affordable price.

Equipped with Allen & Heath's characteristic sound and build quality, this is the first time a DJ mixer at this level has incorporated professional grade features, such as total kill EQ, accurate metering, balanced outputs, high quality faders and professional-standard audio headroom. And to top it all off, there's a "lite" version of Xone's now legendary VCF filter system.



## Features:

- 2 stereo channels with configurable dual phono/line inputs
- VCF system - low-pass and high-pass filters, frequency and resonance controls
- 3-band full cut EQ
- Soft-switched external FX loop
- 18dB pro standard headroom and low audio distortion
- Main mix output on balanced XLR, 25dBu maximum output level
- Signal monitoring with 10-segment LED meters and meter mode selection
- Cue mix control, and cue to master switch
- Dedicated local monitor output (booth output)
- Record output
- MIC input on balanced XLR, with 2-band EQ
- Crossfader curve switch
- Universal voltage external power supply



# XONE:02

From inputs to outputs, Allen & Heath created the XONE:02 to be the world's greatest battle / scratch mixer. Every fader is a deluxe VCA design - they are all reversible, all have contour controls, and they can all be easily replaced by removing the steel faceplate. The fader area has been cleared for action and other controls are out of the way at the top of the mixer, and even the transform switches can be rotated to work the way you like them.

Add to this Allen & Heath's outstanding sound quality, a choice of plain or patterned faceplate, optional Pro Xfade crossfader, and sturdy construction to withstand any amount of rough handling a scratch DJ can throw at it, and we think we might have succeeded.



## Features:

- 4 inputs on 2 dual source stereo channels
- 1 stereo source switchable between line and RIAA phono input
- Balanced XLR main mix output with VCA master level control
- 2 mic inputs on XLR with vocal EQ, FX in/out and independent level control
- 3-band EQ with +6dB boost and -26dB cut
- External FX loop with silent FET-switching
- VCA PAN controls to adjust LR balance or for performance effect
- Rotatable transform switches for stutter FX
- VCA crossfader and channel faders with contour control and reverse switches
- Optional Pro Xfade crossfader
- Link in and out connections for daisy chaining mixers, recording or booth output
- Choice of patterned or plain faceplate
- Advanced cue system with cue/mix select, cue crossfader and large meters



# XONE:4D

Evolved from the, revolutionary XONE:3D, the class-leading Xone:4D is a unique performance DJ controller that enables the seamless integration of computer-based digital media into the traditional DJ workspace. It combines a fully featured, high specification professional analogue DJ mixer with 105 MIDI controls and a 96 kHz 24-bit, 20-channel Allen & Heath-developed USB 2.0 soundcard.

It enables DJs to greatly extend the capability of their digital setup, such as running 4 simultaneous decks in NI Traktor, or by being able to achieve genuine multi-track recording of their sets in applications such as Ableton Live or ProTools. The Xone:4D has been given Traktor Scratch approval by Native Instruments, enabling full compatibility with their encoded vinyl system.



The progressive XONE:4D has been developed in conjunction with some of the world's most cutting-edge DJ/producers to become the ultimate cutting-edge DJ workstation.



All Xones now feature UV screening for high contrast in low light conditions



#### Mixer:

- 4 multi-input stereo channels
- Switchable phono or line input stages, RIAA preamps on 3 channels
- Soundcard output routing switches for each channel
- 3-band total kill EQ +6dB to off
- 2 FX sends, FX1 with pre/post selection
- 2 analogue VCF filters - low, band & high-pass, resonance, frequency and 'on' switch
- 2 stereo returns
- BPM LCD display
- Headphone monitor (3.5mm and 1/4" sockets) with mix/cue control
- Assignable LFO and editable fader waveform function
- Mic input on XLR with level control and 2-band EQ, routable directly to soundcard

#### USB 2.0 Soundcard:

- 20 channel 96 kHz/24-bit USB 2.0
- PC and Mac drivers
- 10 in/10 out (4 analogue + 1 digital stereo inputs and outputs)
- Soundcard inputs fed from mic, FX1, FX2, main mix or stereo channels 1-4 pre or post fade

#### MIDI Control:

- Total of 227 mappable MIDI messages can be sent from select mixer controls
- Shift mode function for double layer
- Compatible with any PC software that has MIDI assignable functions
- 105 MIDI controls, including dedicated MIDI sections containing:
  - 8x60mm linear faders
  - 16 detented rotary pots
  - 10 rotary encoders
  - 50 switches
  - 2 jog wheels
  - 8 illuminated push switches



# XONE:DX

Professional MIDI USB Controller integrated with 4-deck Serato ITCH software

Designed by Allen & Heath in collaboration with Serato, the Xone:DX is a MIDI controller and USB soundcard with total integration for ITCH software. Boasting a huge number of MIDI control messages, inputs for external decks and two dual layer deck simulators, the Xone:DX is the most powerful ITCH controller on the planet.



The brand new version of Serato ITCH, supplied with the DX, provides unique 4-deck control, and features a comprehensive set of digital DJ FX, as well as looping, time stretching and a massive number of DJ tools.



## Features:

- Designed in conjunction with Serato
- Includes full version of ITCH software
- 4 channel layout with FX
- Two dual layer deck simulators
- Bi-colour LED layer assignment
- 20-channel USB 2.0 soundcard
- 24bit/96kHz audio system
- 168 individual MIDI messages available
- RIAA/phono inputs for external decks
- Mix outputs on RCA and balanced XLR
- Separate booth output
- Built-in hardware MIDI interface
- Professional modular construction
- High quality faders
- Compact slim design
- Fully compatible with other leading DJ software
- ITCH includes FX, looping and time-stretching



# Xone:2D

The Xone:2D is a combination of an 18-channel USB 2.0 soundcard and MIDI controller, which DJ's can combine with their existing analogue mixer to create a complete digital DJ mixing system, perfect for integration with DJ software such as Ableton Live and Traktor.

The 96kHz 24-bit USB 2.0 soundcard is provided with a large array of connections for easy interfacing into any DJ setup, while MIDI clocks are generated using the tap tempo button or by analysing the BPM of incoming audio, available from all input channels. One of the input channels can be switched between mic and line, while the other two are phone/line, and the unit is completed by a comprehensive onboard monitoring system.



#### Soundcard:

- 96kHz 24-bit audio transfer
- Interface to any digital source up to 192kHz
- 9 stereo channels – 5 (4 analogue, 1 digital) inputs/4 (3 analogue, 1 digital) returns
- SPDIF input and output on optical and coax

#### MIDI Controller:

- Total of 87 mappable MIDI control messages
- Shift mode function for double layer
- Compatible with any PC software that has MIDI assignable functions
- 4 linear 60mm faders, 8 detented rotary pots, 4 illuminated push switches, 5 rotary encoders, 16 switches, 1 custom jog wheel, crossfader
- BPM detection system
- Headphone monitor system
- External universal power supply



# Xone:1D

Fast becoming the industry-standard for professional DJ's, the Xone:1D is a dedicated MIDI controller connected and powered by USB, which can be used to control DJ software such as Ableton Live and Traktor. It can be used with any brand or style of DJ mixer to add digital control, or add the 1D and a Xone:2D to a favourite mixer to make up the equivalent to a Xone:4D!

As well as the USB connection, the Xone:1D has 5-pin DIN MIDI sockets for connection to other MIDI-enabled devices, such as samplers, sequencers or recorders. In the same way as the acclaimed Xone:4D mixer/controller works, all the MIDI controls can be mapped to software for use as navigation controls, providing the user with the same tactile control of performance software.



## Features:

- 43 mappable MIDI control messages
- USB and MIDI connections
- Compatible with any PC software that has MIDI assignable functions
- 5 linear 60mm faders
- 8 detented rotary pots
- 19 push buttons (4 illuminated)
- 5 rotary encoders with "push to switch" function
- Multi-function jog wheel with switched navigation control



# XONE XD-40



The Xone XD-40 offer excellent audio fidelity in a comfortable, lightweight and compact format. The closed cup design provides good isolation from ambient noise, and minimal bleed.

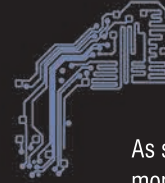
The extended, punchy bottom end is complemented by a crisp and detailed mid and upper range. They are light and well padded, making them more comfortable and less fatiguing for extended use.



## Features:

- Type: Closed-back Dynamic (circumaural isolation design)
- Driver Diameter: 40mm
- Magnet: Neodymium
- Frequency response: 15Hz - 28kHz
- Maximum Input Power: 1300 mW
- Sensitivity: 103dB/W at 1kHz
- Impedance: 48 ohms
- Weight: 230 g (approximately)
- Cable: 1.2m (Coiled) / Max.3.0 m (OFC)
- Earpiece swivel +/-90 deg

# XONE XD-53

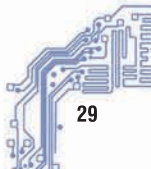


As sported by many top DJ's around the globe, the Xone XD-53 professional monitoring headphones have been developed to complete every DJ's set up, and perfectly complements the Xone DJ mixer range. The XD-53's have a circumaural design, providing excellent isolation from ambient noise, making them ideal for DJ's working in loud environments. The 53mm drivers deliver an extremely high performance, with an extended low frequency response. The rotating earpieces with soft earpads allow easy one-ear monitoring, and the adjustable headband ensures excellent wearing comfort.



## Features:

- 53mm diameter drivers
- High power neodymium magnet design
- 3500mW power handling
- Rotating earpieces for easy one-ear use
- Folding design for compact portability
- Long listening comfort
- Adjustable metal-reinforced headband
- 3.5mm connector with 6.3mm jack adapter on coiled cable
- Storage pouch



# XONE:PB

PATCH BAY

A 1U rack size passive interface box providing a quick and easy solution to set changes in busy club line ups.

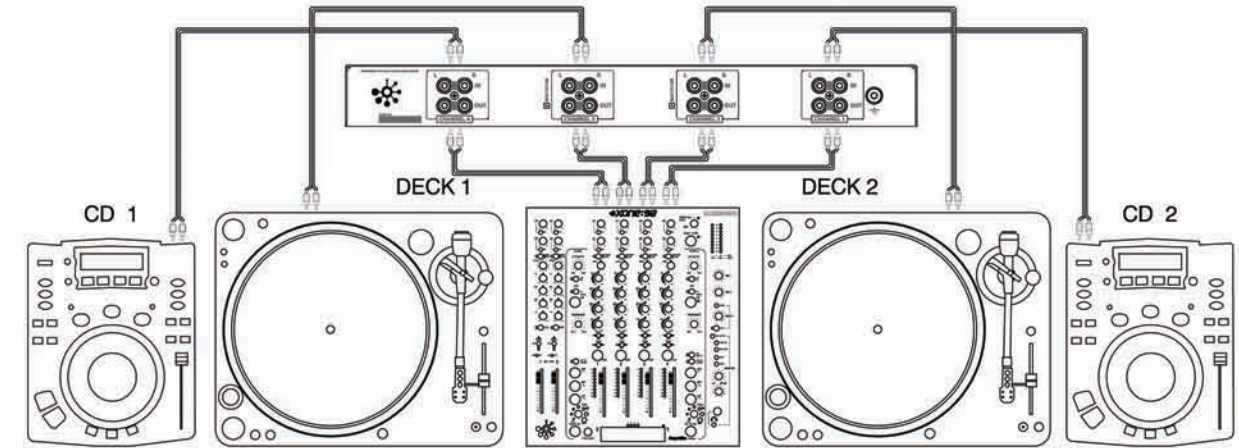
The Xone:PB is designed to simplify the task of connecting encoded vinyl replay systems to installed mixers without the need to re-patch.

Features:

- Two switchable inverse RIAA filters, enabling line level sources to be connected to the phono preamplifiers of the mixer
- Common mode noise attenuation filtering on all external inputs to help reduce laptop power supply noise
- Earth lift switch to help prevent ground loops



## Typical Setup:







## Improve Your DJ Sets

Mixed In Key is software created for the world's best DJs. With its user-friendly design and trusted technology, Mixed In Key makes harmonic mixing easy.

Mixed In Key takes your mixing to the next level by showing which songs you can mix together without a key clash. It works with all CD decks, Ableton Live, Traktor, Serato Scratch Live, and all other mixing software and hardware. Your DJ sets will always sound smooth and professional.

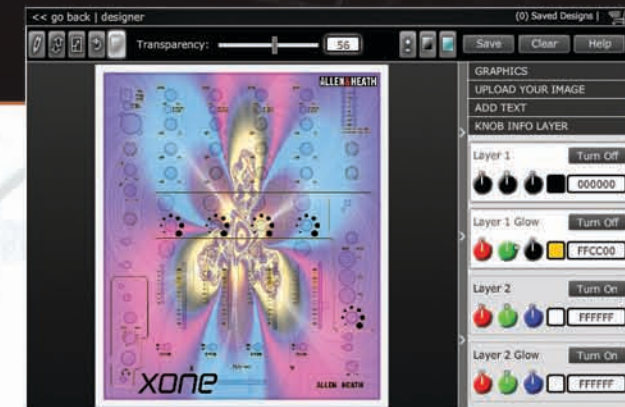
To find out more about Mixed In Key visit: <http://xone.mixedinkey.com/>



## Flip your style with StyleFlip

Allen & Heath have teamed up with Styleflip and are proud to bring a whole new world of style to your gear. You upload your own custom designs and images and create your very own, unique style that sets you apart from the rest. Once you finish the design process your image will be transformed into a one of a kind, sophisticated, protective layer that becomes one with your gear until you decide to change it up with something fresh.

To find out more about Mixed In Key visit: <http://www.xone.co.uk/flip/>



# Technical Specifications

	Xone:02	Xone:22	Xone:32	Xone:42	Xone:62	Xone:92	Xone:464	Xone:4D	Xone:S2	Xone:DX - Soundcard
<b>Operating Levels</b>										
Main Outputs	0dBu Headroom +20dB	+4dBu Headroom +21dB	0dBu Headroom +20dB	+4dBu nominal	+4dBu Headroom +22dB	+4dBu Headroom +20dB	+4dBu Headroom +22dB	+4dBu XLR Headroom +22dB	+4dBu Headroom +22dB	+4dBu Headroom +22dB
Booth Output	0dBu Headroom +20dB	-2dBu Headroom +18dB	-2dBu Headroom +22dB	-2dBu nominal	-2dBu Headroom +22dB	-2dBu Headroom +22dB	-2dBu Headroom +22dB	0dBu Jack Headroom +22dB	-2dBu Headroom +22dB	-2dBu Headroom +22dB
Effect Send output	0dBu Headroom +21dB	-2dBu Headroom +18dB	-2dBu Headroom +22dB	+4dBu Headroom +22dB	-2dBu Headroom +22dB	+4dBu Headroom +22dB	-2dBu Headroom +22dB	-2dBu Headroom +22dB	-2dBu Headroom +22dB	-2dBu Headroom +22dB
Maximum output	+23dBu	+25dBu	+20dBu	+27dBu XLR	+26dBu	+25dBu	+26dBu	+26dBu	+26dBu	+14dBu (l) +8dBu (u)
Mic Pre-Amp Sensitivity	-50 to -10dBu	-42 to -12dBu	-45 to -15dBu	-58 to -26dBu	-45 to -20dBu	-45 to -10dBu	-58 to +8dBu	-45 to -15dBu	-57 to -27dBu	-57 to -27dBu
RIAA input sensitivity	7-140mV 47K/330pF	7-100mV 47K/330pF	7-100mV 47K/330pF	6mVPP - 190mVPP	7-100mV 47K/330pF	4-180mV 47K/330pF	7-100mV 47K/330pF	7-100mV 47K/330pF	7-100mV 47K/330pF	7-48mV 1KHz/330pF
Stereo Line input sensitivity	-15 to +22dBu	-10 to +18dBu	-15 to +22dBu	-20 to +10dBu	-10 to +8dBu	-20 to +10dBu	-10 to +8dBu	-10 to +8dBu	-10 to +15dBu	-10 to +15dBu
<b>Frequency Response (20Hz-30KHz)</b>										
Mic to Main output (+40 dB)	+0/-2dB	+0/-12dB (lo-cut filter)	+0/-12dB (lo-cut filter)	+/-0.6dB built in lo-cut	+0/-0.5dB	+0/-10dB (low cut filter)	+0/-1dB	+0/-12dB (lo-cut filter)	+0/-12dB (lo-cut filter)	+0/-12dB (lo-cut filter)
Line to Main output (0dB)	+0/-2dB	+0/-3dB	+0/-1dB	+/-2dB	+0/-0.5dB	+/-0.5dB	+0/-0.5dB	+0/-2dB	+0/-5dB	+0/-5dB
<b>Distortion at 1KHz +0VU out</b>										
THD + Noise (mic in +40dB gain)	<0.04%	<0.01%	<0.02%	<0.01%	<0.02%	<0.02%	<0.02%	<0.04%	<0.05%	<0.05%
THD + Noise (line in 0dB gain)	<0.04%	0.004% (+10dBu)	<0.04%	<0.03%	<0.008% (Xfader not routed)	<0.03%	<0.008% (crossfader not routed)	<0.02%	<0.05%	<0.05%
<b>Common Mode Rejection @1KHz</b>										
Mic Input +40dB gain	>-76dB	>-50dB	>-50dB	-76dB	>-76dB	>-76dB	>-72dB	>-50dB	-76dB	-76dB
<b>Crosstalk @1KHz</b>										
Adjacent Channel	<-90dB	<-70dB	<-90dB	<-90dB	<-90dB	<-90dB	<-90dB	<-90dB	>-72dB	>-72dB
Mute Shutoff	<-95dB (Transform)	N/A	N/A	<-90dB	N/A	N/A	<-80dB	N/A	N/A	N/A
Fader Shutoff	<-85dB	<-72dB	<-82dB	<-90dB	<-80dB	<-95dB	<-80dB	<-90dB	<-86dB	<-86dB
<b>Noise Performance (22Hz-22KHz unweighted)</b>										
Mic EIN with 150ohm source	-129dB	-118dB	-126dB	-125dB	-126dB	-126dB	-128dB	-126dB	-125dB	-125dB
Residual output noise - main outputs	<-88dBu	<-90dBu	<-100dBu	<-94dBu	<-94dBu	<-95dBu	<-90dBu	<-97dBu	<-90dBu	<-90dBu
Main Mix noise	<-81dBu (81dB S/N)	<-82dBu (86dB S/N)	<-84dBu (84dB S/N)	<-82dBu (-86 s/n)	<-80dBu (84dB S/N)	<-80dBu (84dB S/N)	<-80dBu (84dB S/N)	<-80dBu (84dB S/N)	<-73dBu (77dB S/N)	<-73dBu (77dB S/N)
<b>Connection Impedances</b>										
Mic Inputs	<2K ohms	<2K ohms	<2K5 ohms	<2K ohms	<2K ohms	<2K ohms	<2K ohms	<2K5 ohms	<2K ohms	<2K ohms
Line Inputs	>20K ohms	>10K ohms	>10K ohms	>15K ohms	>15K ohms	>15K ohms	>10K ohms	>10K ohms	>10K ohms	>10K ohms
Outputs	<47 ohms	<68 ohms	<47 ohms	<75 ohms	<47 ohms	<47 ohms	<47 ohms XLR 68 ohms Jack	<47 ohms	<68 ohms	<68 ohms
Record out		600ohms +15dBu max	340 ohms +15dBu max	600ohms	400 ohms +15dBu max	600ohms +15dBu max	600ohms +15dBu max	N/A	600ohms +15dBu max	600ohms +15dBu max
<b>Equalisation</b>										
Gain (each band) Stereo EQ	+6dB/-26dB 12dB/oct 3 band	+9dB / off 3-band	+6dB/-26dB 3 band	+6dB / off 3-band	+6dB/-26dB 4 band	+6dB/-inf(LF/HF) +6dB/-30(MF) 4 band	+6dB/-26dB 4 band	+6dB/off 3 band	+6dB / off 3-band	+6dB / off 3-band
Gain (each band) Mono (mic) EQ	+/- 12dB	+/- 12dB	+/- 12dB	+/-12dB 2-band	+/-15dB	+/-15dB	+/-15dB semi parametric 4 band	+/- 12dB	+/- 12dB	+/- 12dB
Filter	N/A	30Hz-20KHz VCF	100Hz-20KHz VCF with LFO	30Hz - 20KHz	100Hz-20KHz Dual VCF	30Hz-20KHz Dual VCF with LFO	100Hz-20KHz Dual VCF	30Hz-20KHz Dual VCF with LFO	30Hz-20KHz VCF	30Hz-20KHz VCF
<b>Metering</b>										
Reading referred to Main outputs	0VU = 0dBu (12 point)	0VU = +4dBu (10pt)	0VU = 0dBu (3pt ch, 12 pt master)	0VU = +4dBu	0VU = +4dBu	0VU = +4dBu (9 point ch & master)	0VU = +4dBu (3pt ch, 12pt master)	0VU = +4dBu (9 pt ch, 9 pt master)	0VU = +4dBu (9pt)	0VU = +4dBu (9pt)
Peak indication threshold	8dB before clipping	10dB before clipping	12dB before clipping	+10dB	6dB before clipping	6dB before clipping	6dB before clipping	10dB	10dB before clipping	10dB before clipping
<b>System</b>										
Power supply	Internal Universal input	External Universal input	Internal Universal input	Internal Universal input	Internal Universal input	Internal Universal input	Internal Universal input	Internal Universal input	Internal Universal input	Internal Universal input
Power Consumption	30W Max 10W nominal	15W	30W Max 10W nominal	30W max	30W Max 15W nominal	35W Max 18W nominal	30W Max 20W nominal	30W Max 20W nominal	30W Max 20W nominal	30W Max 20W nominal
<b>Connections</b>										
XLR Inputs	Female	Pin1=ground, Pin2=hot	Pin2 = +ve polarity	Pin1=ground, Pin2=hot	Pin3 = -ve polarity	Pin1 = ground	Chassis = chassis	Pin1 ground, Pin 2 hot	Pin1 = ground	Pin1 = ground
XLR Outputs	Male	Pin1=ground, Pin2=hot	Pin2 = +ve polarity	Pin1=ground, Pin2=hot	Pin3 = -ve polarity	Pin1 = ground	Chassis = chassis	Pin1 ground, Pin 2 hot	Pin1 = ground	Pin1 = ground
1/4" TRS Jack, Balanced Input, Insert Return	Socket	N/A	Tip = +ve polarity	N/A	Ring = -ve polarity	sleeve = ground/chassis		N/A	sleeve = ground/chassis	sleeve = ground/chassis
1/4" TRS Jack, Balanced Output, Insert Send	Socket	N/A	Tip = +ve polarity	N/A	Ring = -ve polarity	sleeve = ground/chassis		N/A	sleeve = ground/chassis	sleeve = ground/chassis
1/4" TRS Jack, Insert (unbalanced)	Socket	N/A	Tip = send signal	N/A	Ring = return signal	sleeve = ground/chassis		N/A	sleeve = ground/chassis	sleeve = ground/chassis
1/4" TRS Jack, Unbalanced Input	Socket	N/A	Tip = signal	N/A		sleeve = ground/chassis		N/A	sleeve = ground/chassis	sleeve = ground/chassis
RCA Phono	Socket	outer audio ground	Tip = signal	outer audio ground		Outer = ground/chassis			Outer = ground/chassis	Outer = ground/chassis

**ALLEN&HEATH**  
Kernick Industrial Estate  
Penryn - Cornwall  
TR10 9LU

tel: +44 (0)1326 372070  
fax: +44 (0)1326 377097

email:  
Sales@allen-heath.com

website:  
www.allen-heath.com  
www.xone.co.uk

Allen & Heath reserve the right to alter any information supplied in this document or any other documentation supplied hereafter